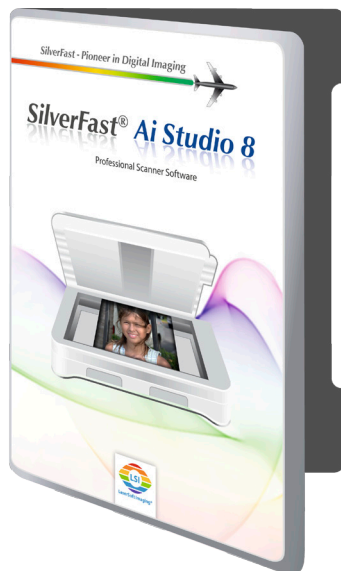
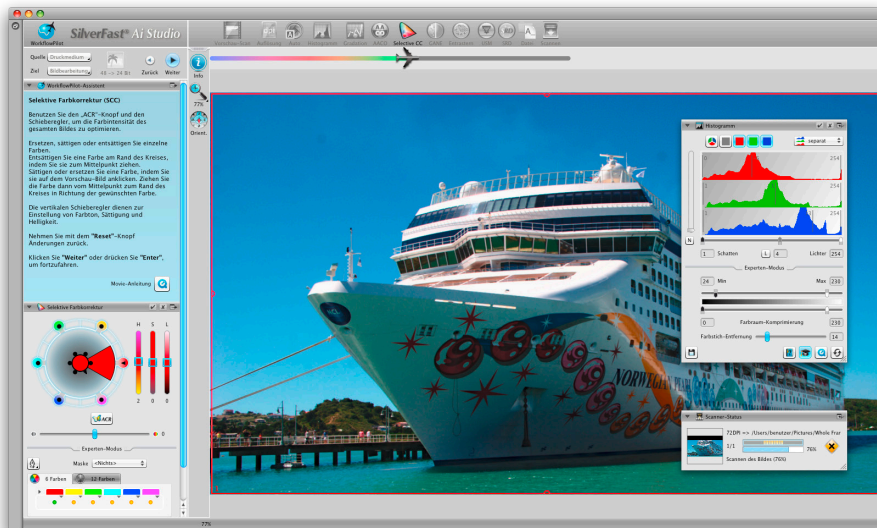


# MORE ACCURATE WORKFLOW

If we want our analog image originals such as negatives, diapositives or photos to be reproduced as fine art prints, a high quality scanning workflow is extremely important. SilverFast is among the most powerful and successful scanner software on the market. Its new version 8 brings out even more from scanner and image material.



The image scanning classic in its new version 8 outfit



Everything at a glance: All features in SilverFast are freely arrangeable on the screen. Thus, room for hints is left.

This year, LaserSoft Imaging celebrates a round anniversary. For 25 years, the company founded by physicist Karl-Heinz Zahorsky has been involved in the development of scanners, imaging software and color management. The company's main product, since 15 years, is scanner software SilverFast.

Different versions are offered for scanners, digital cameras, printers and digital imaging. In addition, there are special solutions such as the High-End Suite for using professional Heidelberg drum scanners with actual computer hardware and operating systems.

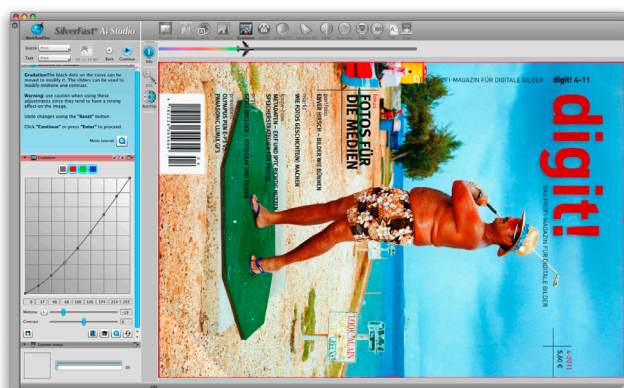
Another product of this company from Kiel, Germany, are IT8 color targets for calibrating scanners for being used in color critical processes.

## Newly Programmed

Version 8 of SilverFast has been totally reprogrammed. The familiarized user will realize how basic usage and structure have been maintained. In addition, many new features speak for themselves. The new WorkflowPilot guides the user through all steps and tools of the scanning process. Depending on material and scanning purpose, a customized workflow is followed.

The controls' layout, known as the Graphical User Interface (GUI) is quite similar to the previous version. Its design has been improved and adjusted to current standards. All elements can be moved and arranged freely in case we don't like their preset position. This is particularly useful when using a second monitor. Palettes and menus are easily placed on one of the monitors leaving the preview window in the other. For receiving the users attention, the active function's dialog opens in the foreground when using the WorkflowPilot.

The SilverFast 8 preview concept is commendable. All adjustments can be examined almost in real-time, depending on computational effort and computer hardware. Moreover, the results from complex functions such as unsharp masking or infrared based dust and scratch removal iSRD, that supports working on different layers, are immediately evaluated. The 100% preview allows even the smallest parameter change to be visible.



The WorkflowPilot also allows automatic image optimization with good results, here from a rasterized original.