



LaserSoft
Imaging



ENGLISH

SilverFast 9 First Steps



Professional Scanner Software

SilverFast

Brilliant Images with SilverFast

Content

1.	Installing the scanner and setting up the software	1
2.	What is <i>MySilverFast</i> ?	2
	Your <i>MySilverFast</i> Account	2
	Forgot password?	2
	Download Software	4
	Add new License	4
	Help Center	5
3.	Activating SilverFast	7
4.	SilverFast as demo	8
5.	Starting SilverFast 9 for the first time	9
6.	Quick start	10
7.	Basic Settings	11
8.	Preview and high-resolution preview	14
9.	Frames	16
10.	Scan Dimensions	18
	Set fixed output size	18
	Set resolution using the resolution controller	19
	Set resolution manually	20
	Resolution slider or manual input?	20
11.	Automatic Optimisations	21
	Automatic image adjustment:	21
	Dust and scratch removal with iSRD	22
	Multi-Exposure	23
12.	Zoom and 1:1 or HQ preview	24
13.	Scan and batch scan	25
14.	Contact & Support	26

These instructions are intended to help you, the user, to take the first steps along the path from analog to digital images. It is intended as a practical guideline for the initial uses of the application. Particular emphasis is therefore given to explaining the steps that will simplify your introduction to the software.

The example pictures are taken from the Ai Studio version. Lower versions offer a smaller scope of settings so that description may differ from what you see on your screen in some points.

1. Installing the scanner and setting up the software

Depending on your operating system and scanner, SilverFast will automatically install the necessary driver for your scanner. Where this is not possible, please install the necessary drivers yourself by installing the latest software from the scanner manufacturer that contains the latest drivers for your device. For scanners from the following manufacturers, you will need to install the drivers in addition to SilverFast:

Windows: Canon, Epson, Plustek (OpticFilm 7xxx-series)

macOS: Canon, Epson (if the scanner is not found automatically)

Connect your scanner to your computer. We recommend connecting directly to your computer - with a short cable, no extension or USB or FireWire splitter.

If you purchased SilverFast online, you received an email with a link to your MySilverFast account, to which your SilverFast license has been added. In your MySilverFast account, you can download the latest SilverFast 9 full version at any time.

Now install SilverFast. The installation will always download and install a current version. Next, you will need a MySilverFast account to activate your license. More about this in the next section.

Start SilverFast 9 from the shortcut on your desktop (Windows) or in your Dock (macOS). The SilverFast welcome screen will open. It provides access to your MySilverFast account, the service dialog with some functions for managing the software, and a menu for selecting the image source.



2. What is *MySilverFast*?

MySilverFast is our online portal introduced with the release of SilverFast 9 for the administration of your SilverFast software licenses. At *MySilverFast* you can always download the current version of your SilverFast software, view your invoices and purchase new software and upgrades. SilverFast 9 is not unlocked via a serial number, but via your *MySilverFast* access.

Your *MySilverFast* Account

If you purchase a SilverFast software (version 9 or higher) through our online store, we will automatically create a *MySilverFast* account for you if no user account has been created yet for the email address used. You will then receive a confirmation email after the purchase, which contains a link to further set up your user account.

Alternatively, you can create your *MySilverFast* account prior to purchase and then use it to purchase your software. To do so, please follow the link above and click "Register".

If you already have a *MySilverFast* account at the time of purchase, please always use the email address provided for that purpose. Then any software purchased will be automatically assigned to your account.

You can access your *MySilverFast* account online at any time at my.silverfast.com. Log in to your *MySilverFast* account with your access data and you will reach your *MySilverFast* portal.

Your *MySilverFast* portal

Please log in to benefit from the advantages of *MySilverFast*.

Login

Note: The access data you need here are identical to those for your software.

Email
Password

[Forgotten your Password?](#)

Login

[Register](#)

Forgot password?

Have you forgotten your *MySilverFast* password?

Please visit my.silverfast.com and click on "Forgotten your Password?".

Your *MySilverFast* Portal

The following options are available:



Manage licenses

Here you can manage your SilverFast licenses and add new licenses.



Help Center

Here you will find manuals, documentation and support for SilverFast.



Edit profile

Here you manage your personal data and settings.

Licenses

In this area you will find an overview of the SilverFast licenses you have acquired. Here you can always download the latest version of your software, purchase new licenses and benefit from price-reduced software upgrades.

Here you will also find entries for demo software that you have registered for testing.

This page also provides you with some options for managing your software licenses.



Manage licenses

Here you can manage your SilverFast licenses and add new licenses.

Your licenses of MySilverFast

You have already purchased these licenses:

Add License

Purchase additional license.

Convert Activation Key.

Convert Promotion Code.

Test our Demo software.



SilverFast Ai Studio 9 (Printer-Calibration)

Archive Style



Scanner Model A



License Type: Full Version
Number of Licenses: 1

Download

SilverFast Ai Studio 9

Demo



Scanner Model B



License Type: Demo Version
(valid until: 2020-11-11)

Download

Purchase

Download Software

Using the [Download button](#) you will always get the latest version of the software you have purchased.

Download

Upgrade Software

Click the [Upgrade button](#) to benefit from cost-effective software upgrades, e.g. to upgrade from scanner software SilverFast SE to SilverFast SE Plus with an extended feature range.

Upgrade

You will be forwarded to the SilverFast Online Store.

Activate Demo Software by Purchase

If you have registered and tested a free of charge demo software, you may use the [Purchase button](#) to buy this software.

Purchase

You will be forwarded to the SilverFast Online Store.

Add new License

Click the [green + button](#) if you want to purchase another software license. On the next page select the [Online Store](#) option and you will be forwarded to make your purchase.

Also, if you have received a [Promotion Code](#) or an [Activation Key](#), you are on the right page to create your new software license and add it to your account.



Your MySilverFast portal

The following options are available:



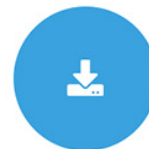
Online Store

Buy new software



Activation Key / Promotion Code

Enter your Activation Key or Promotion Code and create license



Download Demo Version

Test our Software

Help Center

In addition to this PDF file, you will find manuals and videos for using SilverFast as well as our online support in our help area. Select one of the individual tabs:

Manuals:

To get started with SilverFast, we would like to highly recommend our manual [SilverFast 9 – First Steps](#).

Documentation:

Here you will find our [FAQ](#), various [SilverFast Videos](#) and other [PDF Instructions](#).

Support:

Our [helpcenter](#) offers solutions to a wide variety of problems. Here you will find free support but also the opportunity to purchase [Support Packages](#) and personal [1:1 Online Training](#) courses.



Help Center

Here you will find manuals, documentation and support for SilverFast.

Profile

In this area you can view and change some personal data.

- **Email** – Here you can change your email address.
- **Password** – Set a new password for your *MySilverFast* account.
- **Country** – The specification of your country is important for future purchases.
- **Language** – Here you can set the language for your *MySilverFast* account.



Edit profile

Here you manage your personal data and settings.

Invoices

Here you will find all invoices for your SilverFast 9 software products.

In the **View Invoice** column, click on **Show** to open the corresponding invoice in your browser. You can also download your invoices as PDF files by clicking **Download** in the **Download Invoice** column.

If you have acquired a large number of SilverFast licenses, you can limit the invoices displayed using the search field at the top right of the page. For example, enter an invoice number or the date of purchase.



View invoices

Here you will find your invoices.

Your MySilverFast Invoices

Here you can find an overview of your purchases.

Invoice No.	License	Date	View Invoice	Download invoice
920200001XXX	SilverFast Ai Studio 9	2020-09-05	Show	Download
920200001XXX	SilverFast HDR Studio 9	2020-09-05	Show	Download
920200001XXX	other SilverFast products	2020-10-23	Show	Download

3. Activating SilverFast

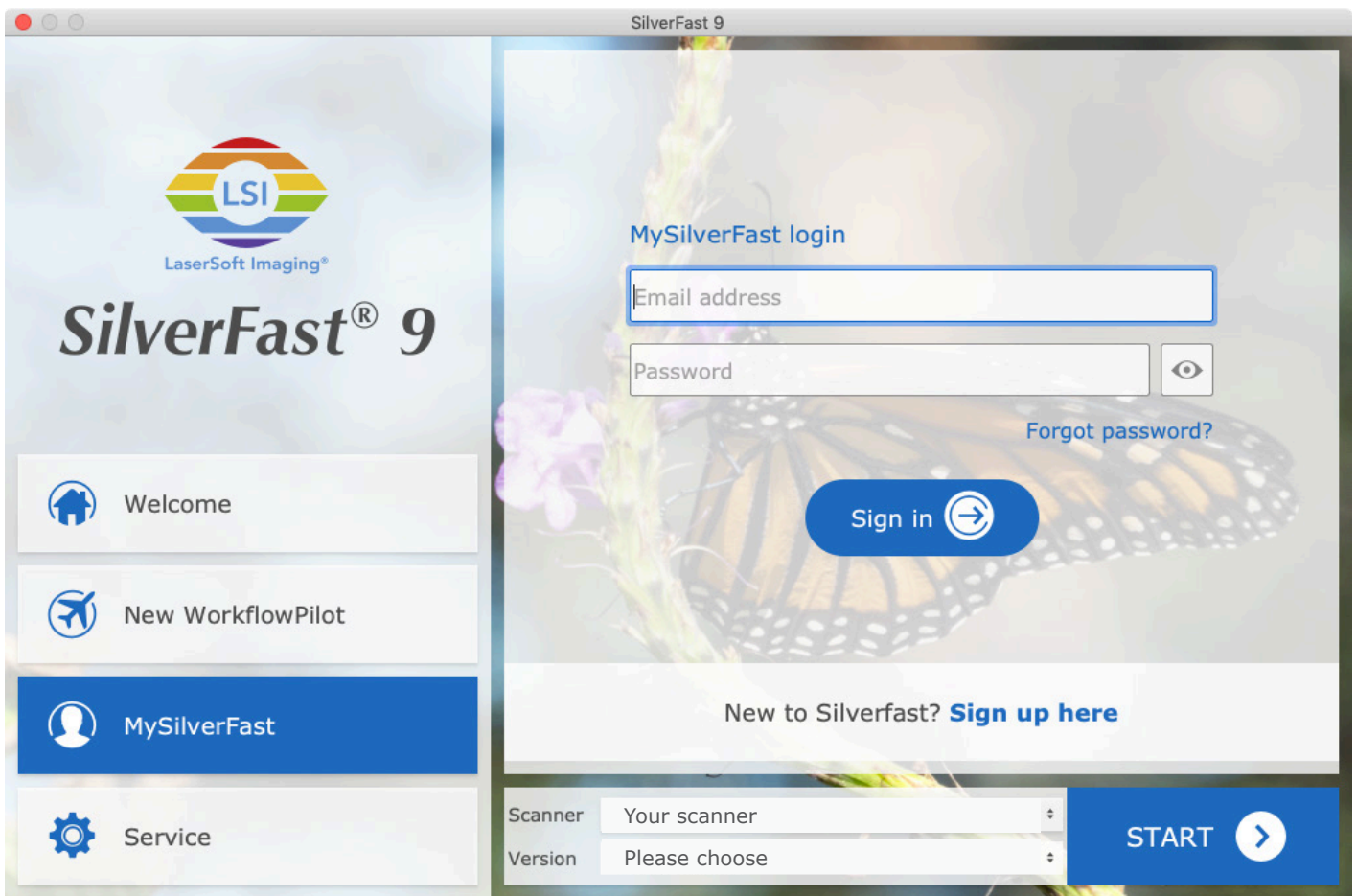
The first time you start a SilverFast version that has not yet been activated, SilverFast will automatically switch to the MySilverFast tab. There you simply enter the same email address and password that you use for your MySilverFast account at my.silverfast.com. SilverFast will connect to your account and automatically activate SilverFast for the connected scanner. Therefore, an internet connection is essential for activation.

After activation you can use SilverFast offline for 90 days. At the latest every 90 days an internet connection is necessary again. SilverFast automatically connects to your user account if an internet connection is available, so that the software can be used offline again for 90 days.

If you plan to work in offline mode, you should start SilverFast once with all scanners while being connected to the internet to activate SilverFast on this system for your other scanners as well.

You can log in on up to 3 systems with your MySilverFast account and thus activate the software. Once you are logged in on too many systems, you can log out yourself on one of the computers or deactivate the license for one of the logged in computers via your MySilverFast account.

You do not have to register your used SilverFast versions individually.

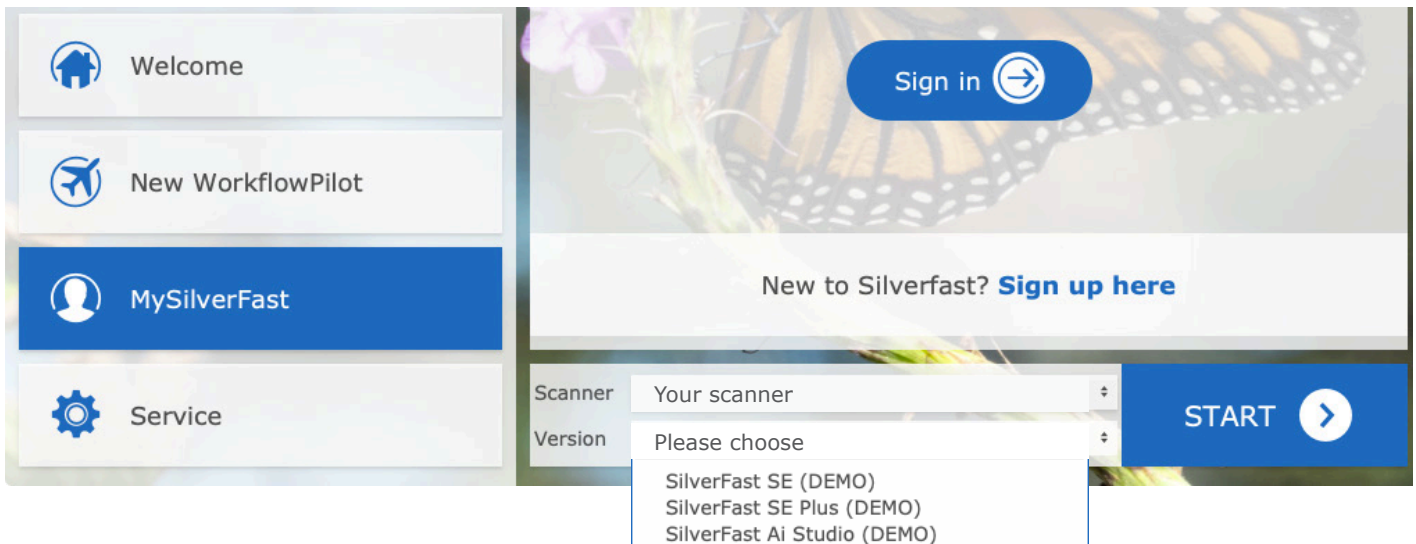


If you have multiple supported scanners and licenses, then you can select the desired device under "Scanner".

4. SilverFast as demo

Activating the demo

SilverFast 9 offers one demo version for each available software level (SE, SE Plus and Ai Studio). This allows you to easily try out the different versions before deciding on a level.

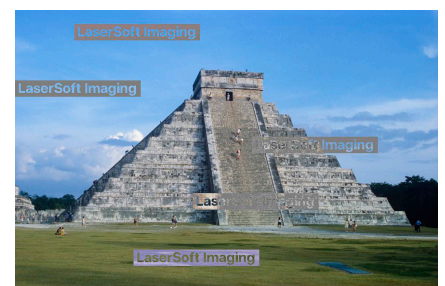


You can also use the demo if you already own a SilverFast license and are interested in higher levels of the software. To do so, simply select the version you want to try out from the drop-down menu. You can also switch back and forth between multiple versions to take a closer look at the differences.

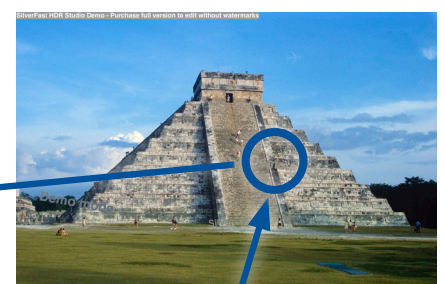
Limitations in demo versions

With the demo version, you can try out all functions (with a few exceptions such as printer calibration, IT8 calibration and ColorServer) of the respective software level for 30 days. This way you can quickly and easily get an impression of the software and how to use it.

Images that you create with a demo version will be watermarked. However, in 1:1- and HQ-preview, you can get an idea of the quality of each tool. These two modes show a preview of the image with the tool applied in 100% view. This is exactly how the finished image would be processed.



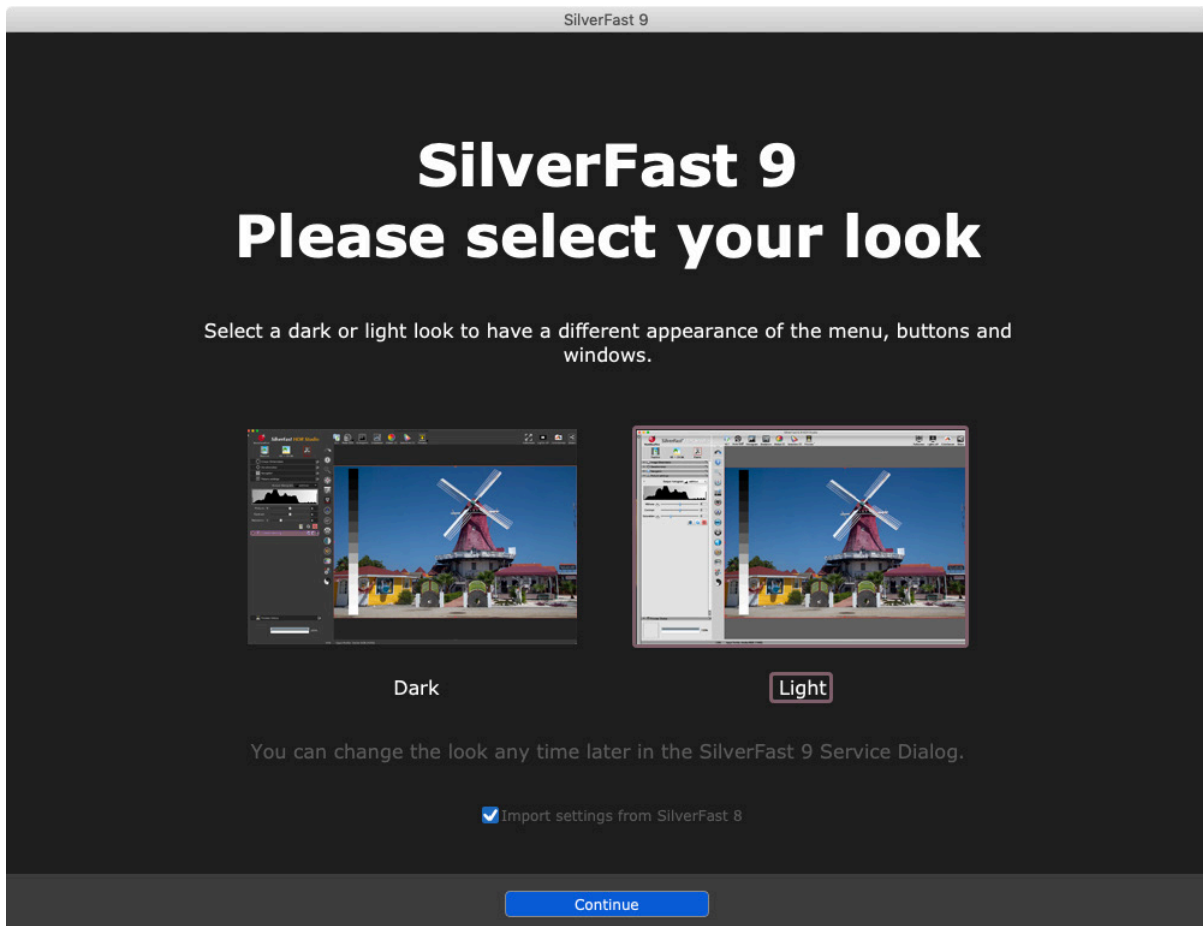
Watermarks - old version



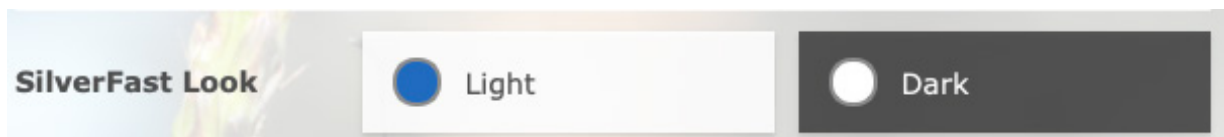
Watermarks - new version

5. Starting SilverFast 9 for the first time

At the first start you can choose between a light and a dark user interface and import settings from the previous version SilverFast 8.



If you want to change the display mode later, you can find the corresponding option in the service area of the welcome screen.



6. Quick start

Tired of reading and want to get straight to the action? The following quick-start instructions provide a general overview of the key points and the course of action.

1. Start and activate SilverFast
2. Select Transparent / Reflective (only for flatbed scanners with transparency unit)
3. Select Positive /Kodachrome / Negative
4. Change the color depth if necessary
(HDR and HDRi RAW are best suited for HDR Studio).
5. Set the resolution
6. Start preview scan
7. Activate tools (iSRD, Multi-Exposure)
8. Select Frame > Frame search > Film holder type (if applicable)
9. Start Automatic image
10. Accept settings for all frames if necessary
11. Start scan or batch scan

7. Basic Settings

SilverFast has a series of settings that you should define before launching the preview scan. These instructions refer to Manual mode in SilverFast, which you can recognize by the red icon of the WorkflowPilot. If you see the blue WorkflowPilot symbol after start-up, click on it to change to Manual mode (red icon).



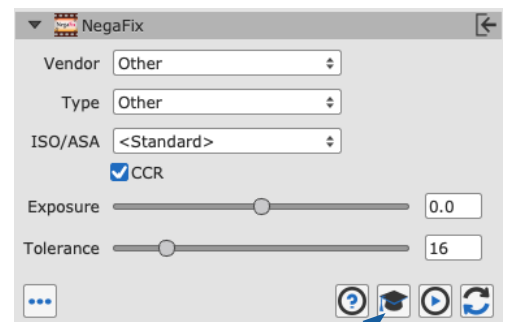
A **flat-bed scanner** with a transparency unit gives you a choice between transparency and reflective scans. In this case, "Reflective" refers to the scanning of photos on paper. Select "Transparency" for scanning slide positives, Kodachrome images and negatives, either framed or on film strips. For transparency scans on a flat-bed scanner, it is important to remove the cover of the transparency unit.

On a pure **film scanner**, it is only possible to scan transparent material, and the reflective mode is not available. On some film scanners, the film holder type can be selected in the software instead.

Next, select either positive, negative, or, Kodachrome; the "Kodachrome" setting being reserved for the SE Plus and Ai Studio versions.

"Positive" is the setting used for normal positive slides. Select "Kodachrome" for the special slide film from Kodak – often identified by the "card frame". The selection automatically loads a special color profile which prevents the usual blueness that Kodachrome images would otherwise acquire when scanned without this special feature. Besides, a specially adapted dust and scratch removal is activated when you use iSRD.

If you have selected the "Negative" setting to scan your negatives, the NegaFix dialog will have opened simultaneously as an additional tool. In the NegaFix dialog you can choose a film from a wide selection of manufacturers and different film types with different ISO values. This ensures that the orange mask of your film strip is correctly removed during its transformation from negative to positive. When using our HDR and HDRi raw data formats, this information is saved for later processing. If your film type is not listed, select a similar film type or use the standard profile:



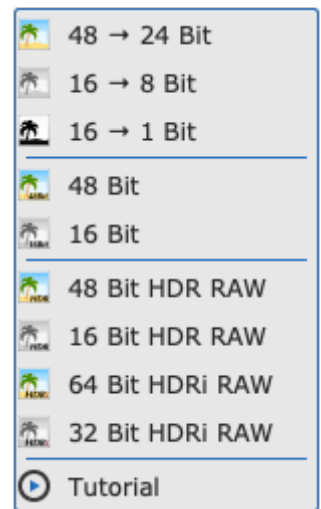
Expert-Settings

Manufacturer: other, film type: other, ISO/ASA: Standard. In the Expert section of the dialog in Ai Studio, you can

also edit the profiles or create your own profiles. Open the dialog's Expert section by clicking on the mortarboard.

Select the color depth as the final step before the preview scan. The color depth describes the number of bits per color channel. Color images are comprised of the three color channels **R**(ed), **G**(reen) and **B**(lue), each with 8-bit data or 16-bit data. Black-and-white images are managed with one channel with 8-bit or 16-bit data. This delivers the different color depths that can be set in SilverFast. The greater the color depth the larger the resulting file.

SilverFast displays the input values to the left and the output values to the right of the arrow. If only one value is present, the input color depth corresponds to the output color depth.



SilverFast always uses the largest possible color depth that the scanner offers and also uses this for internal calculations. Depending on the SilverFast version, an output with 16bit per channel or with 8bit per channel is then possible. All versions offer 16bit for raw data scans, but only the Ai Studio allows both 16bit raw data and 16bit for processed images.

16-bit data provides a higher range of color gradations (65536 per color channel) in comparison to 8-bit data (256 per color channel). SilverFast therefore handles your images with 16 bits per channel. If you wish to continue editing your images after scanning, select 48-bit color depth for 16 bits per color channel so that you can also still access the full range of color gradations later on. Once the settings are to your satisfaction, output the images with a 24-bit color depth for an 8 bits per color channel. For digital images that are not going to be edited further, 24-bits is the most common color depth.

An example:

48>24bit is the standard setting in SilverFast. This setting reflects that SilverFast fetches the maximum data (48 bits total, 16 bits per color channel) from the scanner, processes it in 48-bit and then outputs the image with a total of 24 bits (8 bits for each of the three color channels **R**ed, **G**reen and **B**lue).

 48 → 24 Bit

SilverFast internally uses the 48 bits of the input and reduces to 24 bits for the final image.

 48 Bit

SilverFast internally uses the 48 bits of the input and also outputs the final image with 48 bits.

The 16 bits per channel **output** from the Ai Studio version is available for the file formats that support 16 bits: TIFF, PSD and JP2. Please note that not every image editing program can process 48-bit images.

For **color images**, select the 48-bit option in order to obtain 16 bits per color channel. Select 48>24 bits for images with an 8 bits per color channel, which all image editing programs can read as standard.

For your **black-and-white images**, select 16 bits accordingly for the maximum output, select 16 bits accordingly for the maximum output data and 16>8 bits for data with maximum compatibility. SilverFast offers the 16>1 bit option for **line art**.

SilverFast also offers some HDR and HDRi raw data formats. If you select one of these raw data formats for the output, your image is saved with the full 48-bit data volume without loss of quality. No optimizations are performed for this, and all functions for editing your images are deactivated for the scan. Your images reach your computer as unchanged and as original as possible. This means that negatives are saved as negatives without being converted and slides look much too dark in basic image viewing programs. No gamma correction is applied to these raw data formats. Instead of gamma 2.2, these files are saved with gamma 1.0.

These HDR and HDRi images are intended for later processing in SilverFast HDR (Studio), which is able to access the full data volume of these raw data images. Furthermore, this original data remains unchanged by the HDR (Studio) software during editing: The HDR (Studio) software saves the settings you have made for each image in addition to the image data, without affecting the actual original data. This workflow can therefore be described as "non-destructive" or lossless.

In comparison to the HDR format, files in HDRi format contain additional data from the hardware-based infrared channel that the HDR (Studio) software can use to remove dust and scratches with precision. This allows complete image processing to be performed on another device, at a later time and irrespective of the scanner. The full 16-bit data is always used for the raw data format: 64-bit HDRi for raw data of **color images** including the data from the infrared channel or 48-bit HDR for raw data without infrared channel. 32-bit HDRi is used for **black-and-white images** with infrared channel and 16-bit HDR is used for raw data without infrared channel.

This lossless raw data format can be accessed via the WorkflowPilot by choosing the archive workflow. Accordingly, the combination of the Ai Studio software and the HDR Studio software is known as "**Archive Suite**".

You can find out more about "Archiving with raw data" here:

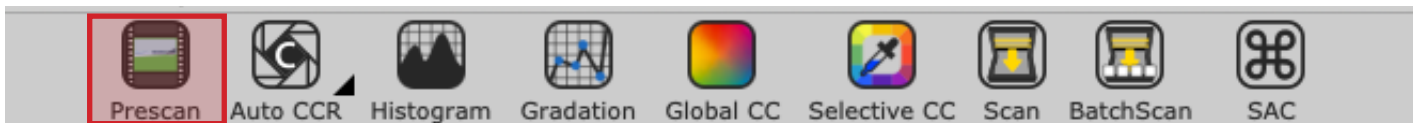
<https://www.silverfast.com/show/archiving-software/en.html#concept>

Some of the basic settings have now been made, and the preview can be launched.

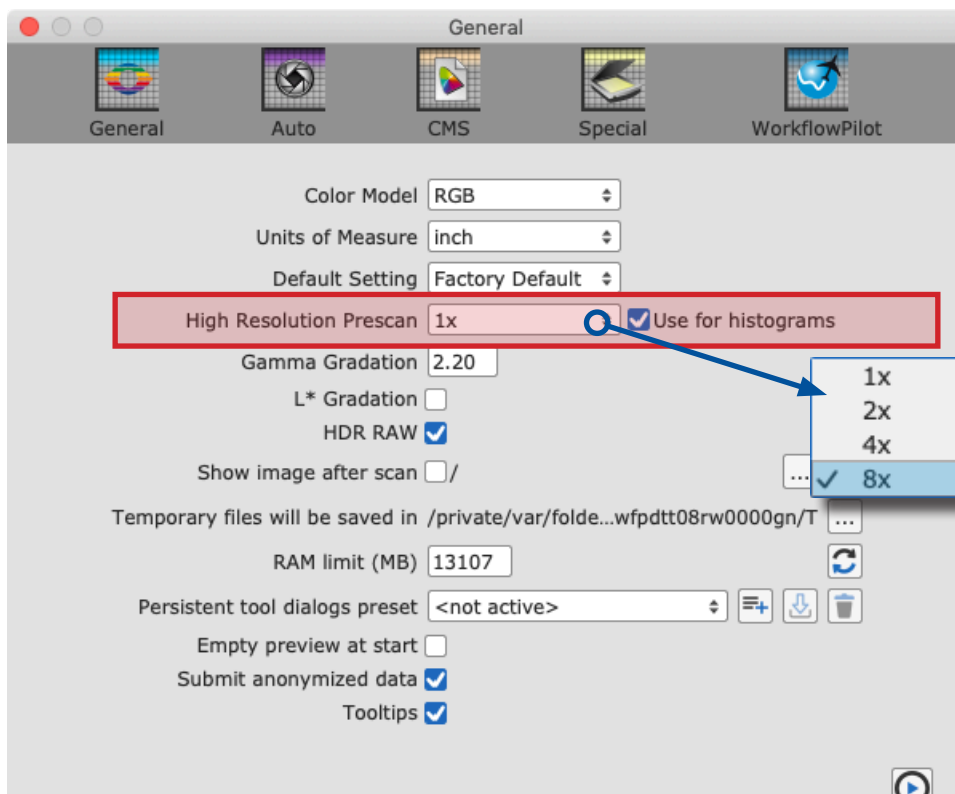
8. Preview and high-resolution preview

The way in which you can work with the preview differs slightly, depending on whether you use a flat-bed scanner or a film scanner without automatic feed or a film scanner with automatic feed.

In the case of a **flat-bed scanner**, you call up the preview via the Preview Scan button in the bar above the preview. For the preview, the entire flat-bed is scanned in low resolution and is shown in the preview window.

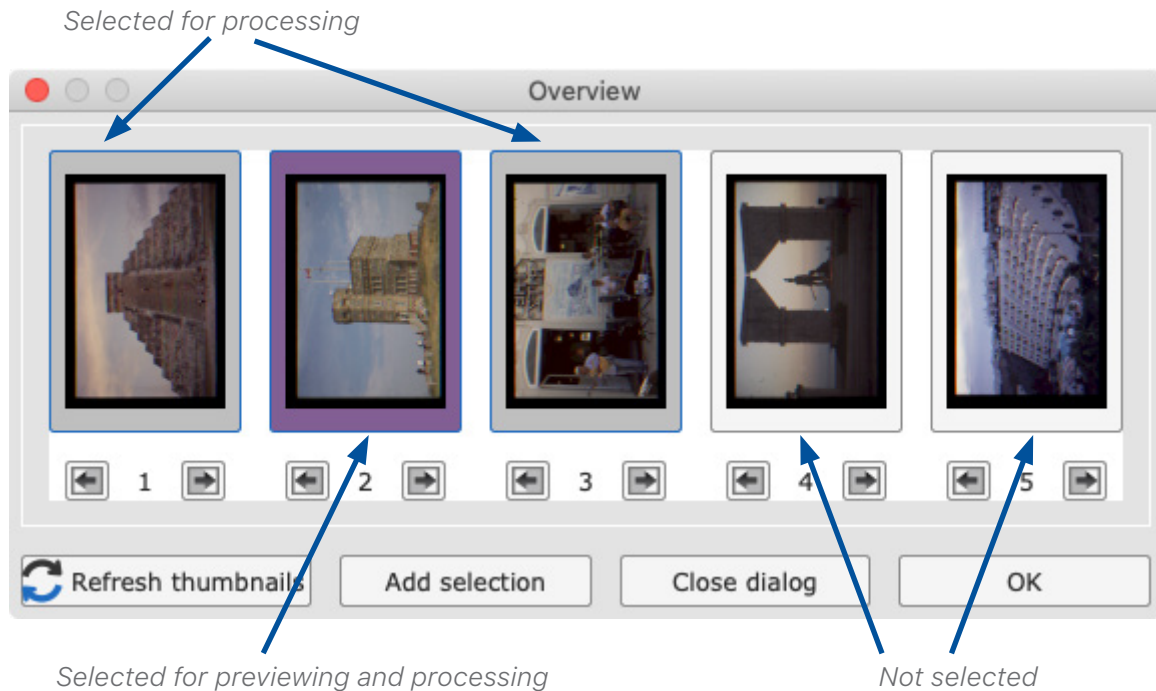


In Ai Studio, a high-resolution preview can be activated for **flat-bed scanners** under macOS via the menu SilverFast 9 > Settings > General and under Windows via the menu Image > Settings > General. This is then performed with a multiple of the selected preview resolution. This takes slightly longer initially, but subsequently saves a great deal of time. Without getting too far ahead of ourselves, it is important to point out that both the automatic image optimization and the frame search IFF+ (Intelligent Frame Finding) work all the more precisely the more data is available. If you want to use the high-resolution preview, you must define the scan resolution before the preview scan. See Chapter 10 for more about resolution.



In the case of a **film scanner without automatic feed** also, you call up the preview via the Preview Scan button in the bar above the preview. The current image is then scanned for the preview.

For **film scanners with automatic feed** there is an additional function: the overview. The button for the overview scan is in the vertical tool bar, on the left next to the preview image. The overview scan creates an overview of the images in the inserted holder in an additional window. In this overview you can mark the images that you want to select for the final scan.



In addition to the markings, there is also a frame which you can use to select the image for the preview. The overview dialog is therefore also the tool for switching between the previews of the inserted images.

In SilverFast Ai Studio, there is also the possibility of transferring a selection of images directly into the JobManager ("Add selection" button), where you can then edit each image with individual optimizations before starting the batch processing.

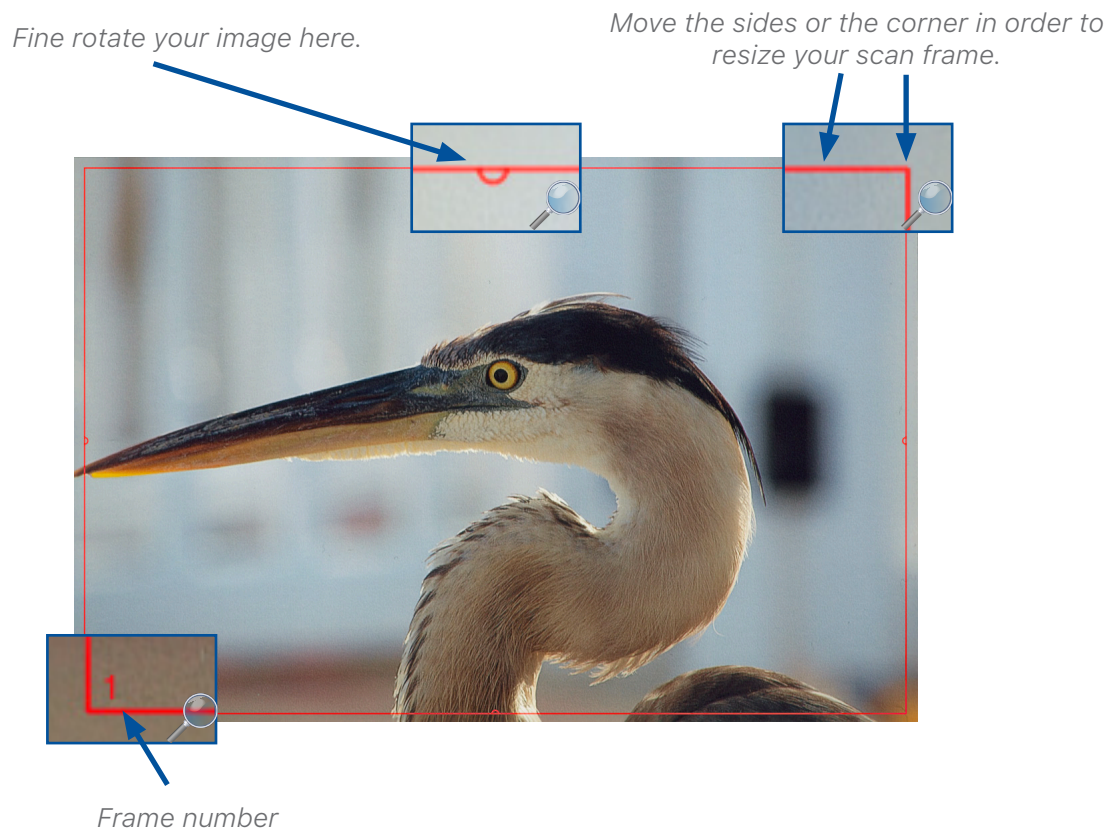
Note:

Nikon 35mm scanner with SF-200 and SF-210 holder: No overview dialog is available for this holder, because the holder can transport the images in one direction only.

In the case of the Reflecta DigitDia 6000 and 7000 and PIE PowerSlide X, the overview dialog also offers configurations to set up the slide tray. With this device, the overview scan is not automatically started because this would take considerable time - depending on the slide tray used. The automatic overview scan can be activated and deactivated again via Settings > Special if you want to make use of it.

9. Frames

A red frame is always visible in the preview. This frame marks the area that is being scanned and the frame on which you are currently working. The red frame is therefore equivalent to the image being scanned.



You can move a frame with the mouse, or you can shrink or enlarge it by clicking on and dragging one of the four sides of the frame. If you click on and drag the frame's corners with the mouse, you can change two sides at the same time. You can rotate the frame by clicking on and rotating the semicircles at the halfway points of the sides.

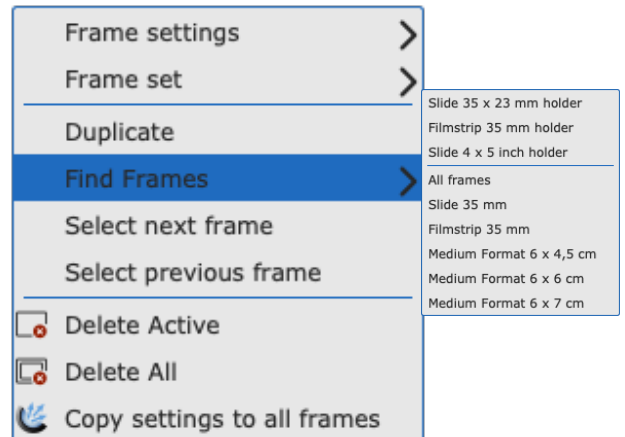
You can change the frame in the preview and in the zoomed preview, whereas in the 1:1 and HQ preview it is fixed and cannot be adapted. The fine rotation is not available if you have selected one of the HDR or HDRi formats. Go ahead and adapt the red frame to your image.

For negatives in particular, it is important to set up the frame precisely because all information in the red frame is taken into account for the conversion. In the case of a negative, a black edge around the actual image would make the converted image brighter than it actually is.

With a **film scanner**, you only have one image per preview in most cases. The holder is moved to the corresponding position for the next image.

The situation is different with a **flat-bed scanner**, on which the film holders can in most cases accommodate several slides or film strips. In this case, you can use the frame search IFF+ for the corresponding holder in the software. The frame search creates a frame for you for each image recognized. In particular, the frame search IFF+ saves a lot of time when a flat-bed scanner is used. Here too, the red frame is always the active frame for which you set changes. In a batch scan of course, all frames are scanned including the non-active ones.

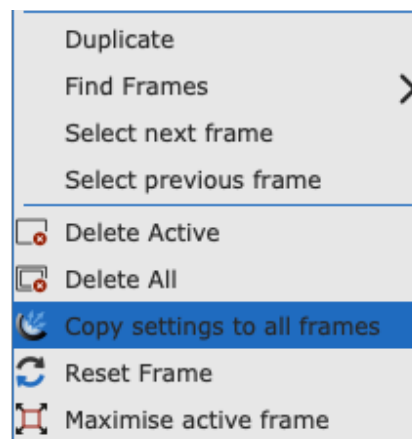
For the frame search, click on "Frame" and then on "Find frame". Now select the matching holder that you have inserted. If you are using the 35mm slide holder, select "Slide holder 35mm". The frame search now creates all the necessary frames for you itself.



As explained in the section about the preview, in Ai Studio you can activate the high-resolution preview before you perform a preview scan. This provides more exact data for the most precise detection of frames possible.

Tip: When you configure the active frame and only then start the frame search, the frames are created with the configuration of the first frame. This means that the same settings do not have to be made for each frame over and over again. There are some tools that work automatically and that are optimally suited to be copied. See Chapter 13 for more details.

If you have first used the frame search, you can also accept the active frame's settings for all frames in the frame menu. Both of these require you to be in the unzoomed view for the entire flat-bed.

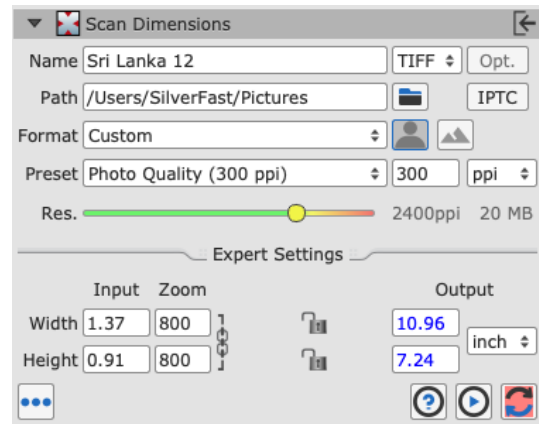


On most scanners, you can create new frames manually in addition to the frame search. **Draw frame:** To do this, click with the mouse in an area of the preview without a frame, and draw a new frame while keeping the mouse button pressed. Release the mouse button to create the new frame. **Copy frame:** However, you can also move an already existing frame while keeping the ALT key on your keyboard pressed. When you release the frame, a copy of the frame is created at the new position. The new frame takes over the settings that were made for the original frame.

10. Scan Dimensions

You can find a very important dialog for configuring your scan in the very first place in your tool dock:

In this dialog, enter the name for your image along with the file path, select the file format and define the resolution for the scan. "Format" defines the dimensions for the output. If you select "user-defined", the output format conforms to the format of the red frame in the preview.



The **resolution** is influenced by several factors:

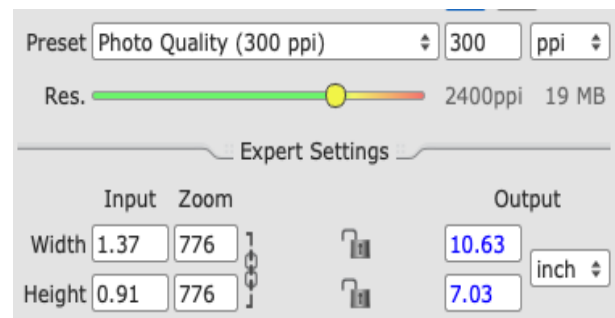
The **preset**: The preset indicates the desired output resolution, particularly for printing later on. A conventional home printer is capable of up to 300 ppi, and this value is therefore set as standard.

The **resolution slider**: The resolution slider addresses the resolutions supported by the scanner so that you can work without interpolation. The very last resolution offered is an interpolated one. Next to the resolution slider, you can see the resolution actually used for the scan.

There are several ways to work with this dialog:

Set fixed output size

As an example, let's take a scan of a 35mm slide that you want to enlarge to A4. The red frame is adjusted to the size of the slide which results in the displayed input size. You leave the preset at 300ppi. Now manually enter the larger value in the appropriate field under Output, allowing for a small margin if necessary. The second value is automatically adjusted, preserving the aspect ratio of the selected frame.



SilverFast automatically calculates the magnification factor and sets the resolution required to print at the selected 300 ppi in the selected output size. Of course, you can also switch from cm to pixels and specify a fixed pixel size, as is common with digital images.

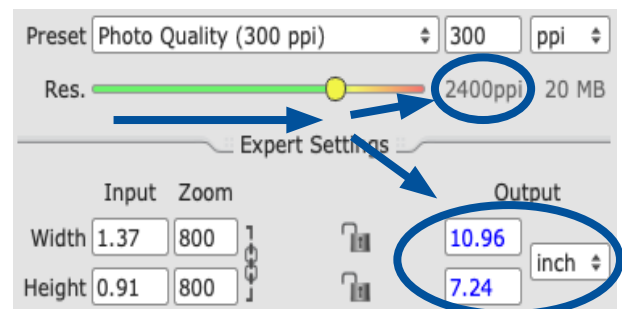
Set resolution using the resolution controller

You can alternatively set the resolution by using the slider to set the output size. As an example, let's take the slide again. You want to print the image again afterwards, but you are not sure how large you can enlarge the slide without the quality suffering noticeably. Your home printer, prints at 300 ppi as in the previous example. You select your slide in Preview, so again you set 300 ppi as your output preset.

Now you slide the resolution slider to the right and you have the output size and the display next to the resolution slider in view. You now move the resolution slider further until the desired image size is reached. The output size and the resolution are linked and SilverFast automatically adjusts the other value when you change the resolution or the output size. When doing this, make sure that the resolution slider does not go into the red area if possible. The red area means that the resolution is interpolated. The red area indicates that the optical resolution of the scanner has been exceeded and an algorithm is enlarging the image by multiplying the existing pixels. This generates computational information that is not contained in the actual image.

Interpolation should only be used in cases where the additional size is actually necessary. Since interpolation can also be used after scanning, it makes sense to scan images at the maximum optical resolution and to use interpolation on a case-by-case basis. This reduces processing time and memory requirements.

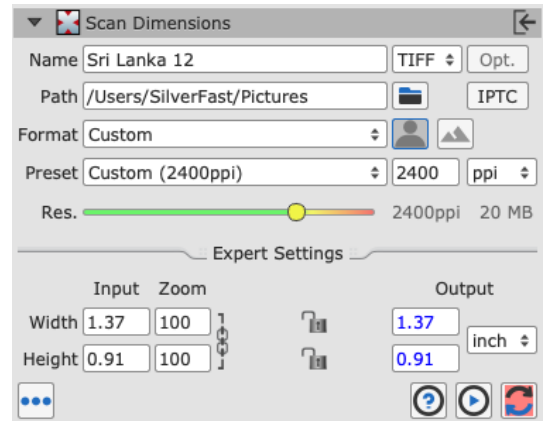
So, if possible, move the slider to the orange range at most. The output size then shows up to which size you can print your image at 300 ppi without loss of quality and without interpolation.



A slide of 1.37 x 0.91cm is scanned and enlarged. An 8x magnification (800% zoom) allows an output size close to A4 format at an output resolution of 300 ppi.

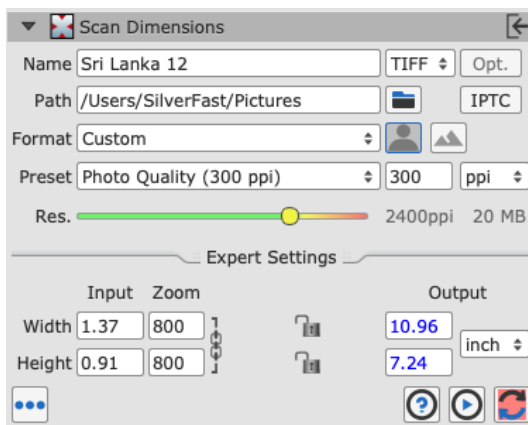
Set resolution manually

However, it is recommended to enter the desired resolution manually in the box next to the Preset menu if you already know the resolution that you want to work with. To do this, leave the resolution slider at 300 ppi and the zoom at 100%. If you now enter a value manually, this is displayed as a user-defined value in the Preset menu. The value given as the preset is also the one that is displayed when you open your image with another program following the scan.

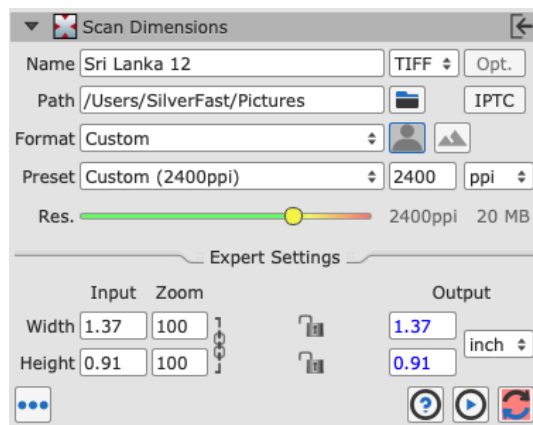


Resolution slider or manual input?

If you work with the preset and the resolution slider (left screen), SilverFast saves the set print resolution for this in the file's metadata so that programs with which the image is later opened display the selected print resolution and output size. If you enter the value for the resolution manually (right screen), this value is stored in the metadata and is displayed later as the resolution when the images are opened.



Output: Large size, low resolution



Output: small size, high resolution

The Scan Dimensions and Resolution dialog summarizes the relationships between input resolution, magnification, output resolution, and output size in operable tools and provides a practical solution for most workflows by offering various ways to deal with resolution.

11. Automatic Optimisations

SilverFast offers a number of automatic optimizations that can assist you in optimizing your images and do some of the work for you.

Automatic image adjustment:

The automatic image adjustment function is located in the bar of the color-modifying tools next to the preview scan button above the preview. There are two general optimizations, "Auto" and "Auto CCR" (Color Cast Removal) as well as various automatic functions that are adapted for typical and frequent scenarios. A long click on the button for automatic image adjustment opens the menu in which you select the appropriate optimization for your image. You can also reset the automatic image optimization in this selection menu.



The triangle shows additional options that become visible with a long click on the icon..



The red dot indicates that the tool has been activated and is being used for the editing.

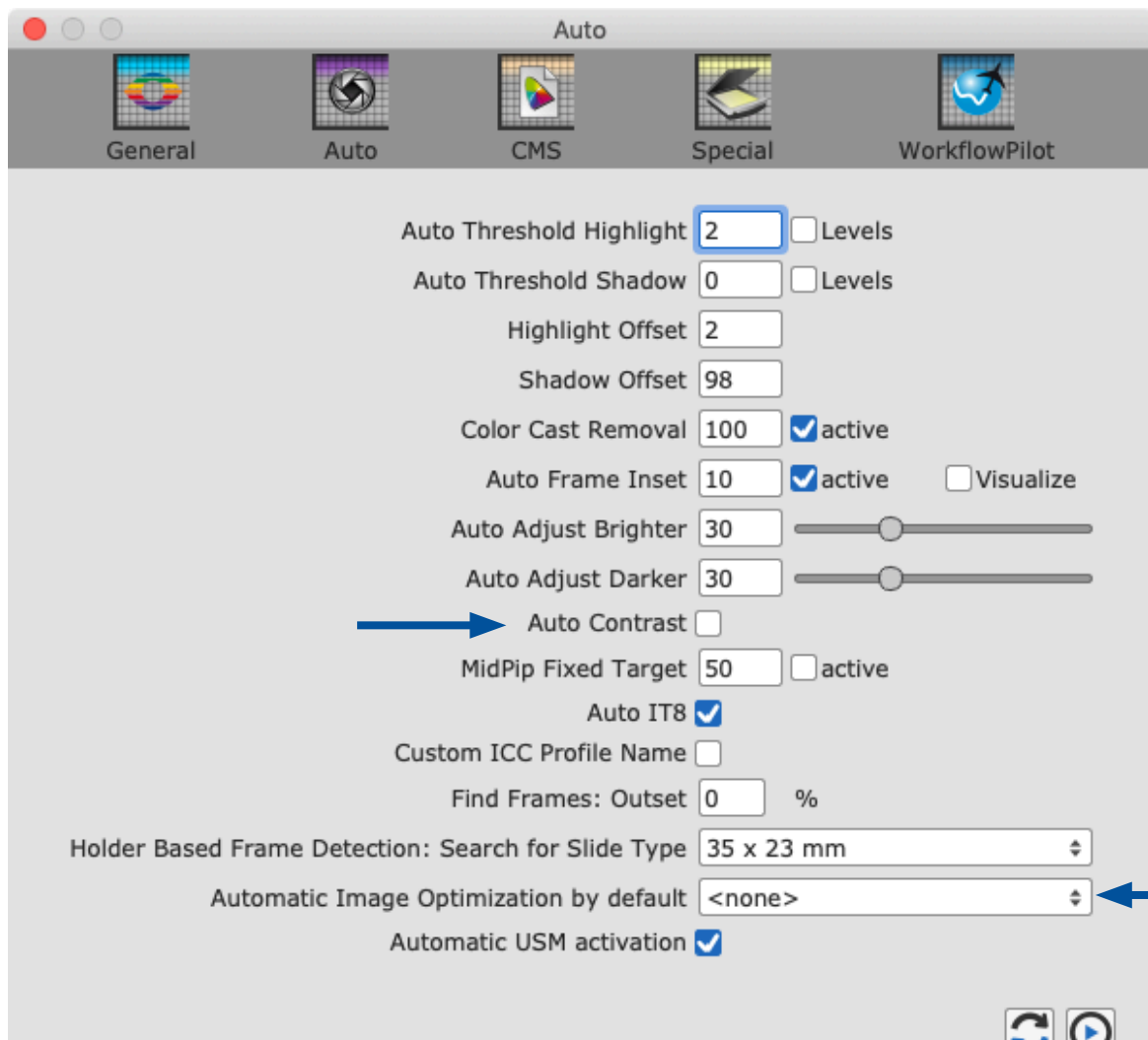
The automatic image adjustment makes changes to the histogram and gradation so that these tools are opened and, by way of a red dot in the icon, indicate that they are active.

The automatic image optimization by default doesn't optimize the contrast. If the automatic optimization is also supposed to adapt the contrast, simply activate this option in Preferences > Auto.

Auto Contrast

The human eye perceives contrast as sharpness. If you have the impression that your images are too flat or blurred, try using some contrast.

Also under Preferences > Auto, you can define an automatic image adjustment that is automatically performed on every image individually in every frame search. This is particularly important for batch scans in which not every image is individually adapted via the JobManager (in Ai Studio)



Dust and scratch removal with iSRD

Thanks to an additional infrared lamp installed in the scanner, the infrared-based dust and scratch removal function "iSRD" (infrared Smart Removal of Defects) allows very precise recognition and removal of dust and scratches. It is not available in Reflective mode or on scanners without an infrared channel. This function works automatically, but can of course also be adapted manually.

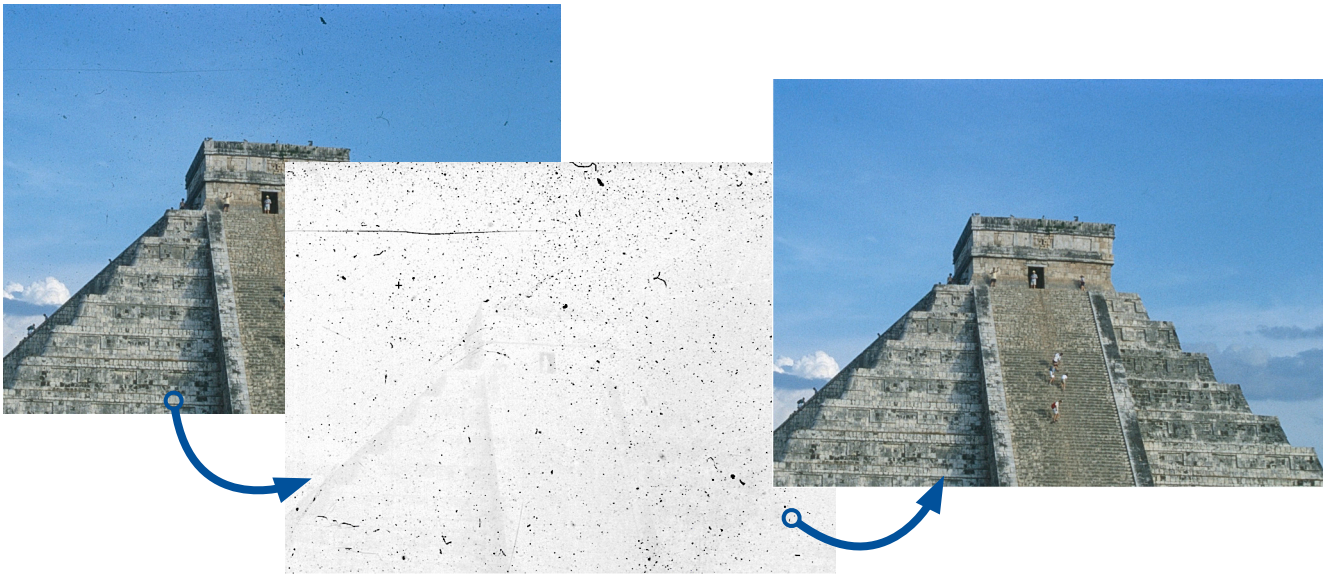


Activate this function by clicking once on the "iSRD" button in the vertical toolbar. The red dot in the center of the button indicates that the tool is switched on and is being used.

Note:

You should not use the infrared-based dust and scratch removal function if you want to scan black-and-white negatives, and you should use it only with caution when scanning Kodachrome images. The silver halide in the film material can reflect the scanner's infrared light and cause artefacts in the image.

An adjusted correction is already performed for Kodachrome images. It is however nevertheless advisable to work with low defect detection.



SilverFast uses the infrared image (middle) to detect dust and scratches on the original analog image and retouches them fully automatically for the digital image.

Multi-Exposure

Multi-Exposure combines an under-exposed scan of your image with a normally-exposed one. Most slides, negatives or Kodachrome images have a very high dynamic range (also called density range), and only an increase in your scanner's dynamic range via Multi-Exposure enables the full dynamic range of the original to be obtained. This picks up more details in the dark and light ranges and reduces image noise.



With Multi-Exposure, the scanner picks up far more different color gradations that SilverFast can utilize for image optimization, even if they cannot be perceived by the naked eye. This makes Multi-Exposure one of the most important digitizing tools, particularly in the case of extreme dense film types such as Kodachrome films.

Activate the "ME" button in the vertical tool bar. The red button indicates that Multi-Exposure is active. On some devices, the Multi-Exposure scan and the normal scan are performed in one pass.

Multi-Exposure is available in the SE Plus and Ai Studio version. Multi-Exposure is available only for transparency scans and is hidden when you use Reflective mode. Multi-Exposure is also available for our raw data formats HDR and HDRi and, together with the 48-bit data, offers the greatest possible data volume.

12. Zoom and 1:1 or HQ preview



You can now use the magnifying glass symbol to zoom in and out in the individual frames. You can also press the button for slightly longer in order to select zoom functions from the menu. Here too, the small triangle next to the icon shows that additional options are available.

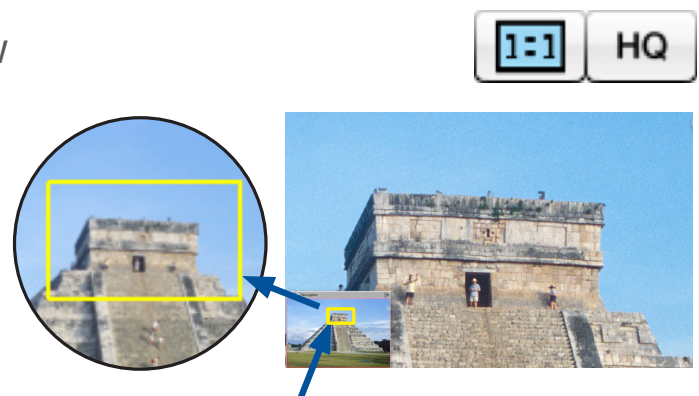
In the zoomed preview, sufficient data is available to adapt your image manually with a very high degree of precision and to optimize it with the automatic image function.

If you have activated the high-resolution preview beforehand, you can now call up this enlarged preview of your images without scanning again. In the Navigator, you can change between the frames in the preview without having to exit the Zoom view every time.

If you click in the preview and drag a frame while holding down the CMD key (macOS) or the CTRL key (Win), you will zoom into the selected area.

The 1:1 preview and the HQ preview

The 1:1 preview and the HQ (High Quality) preview both start a Zoom preview with a 100% view. This means that a preview scan is performed with the set scan resolution. In the preview, you now see a section of the image (in its original size at the set resolution) that you can move via the yellow frame in the Navigator, or by pressing the space bar while simultaneously moving the preview with the left mouse button pressed.



The yellow frame in the Navigator determines the image section that is shown in the preview.

The effect of most tools is best assessed at the resolution that you will also scan with. Sharpening using the unsharp masking for example depends greatly on the resolution used. The 1:1 and HQ preview provide reliable and predictable results. Since the image can be directly saved after a 1:1 or HQ preview for which all the required data has been collected from the scanner, this function requires no additional time.

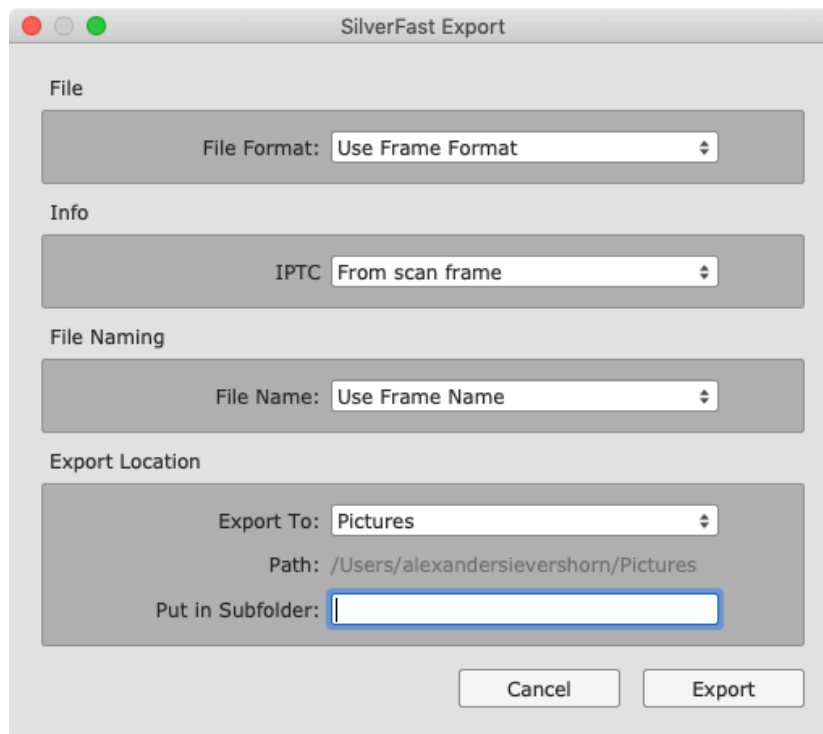
The 1:1 preview and the HQ preview both allow precise adaptation of your image. They differ in the fact that for the 1:1 preview, the selected tools are initially calculated only for the area that you have currently got selected with the yellow frame in the Navigator. The HQ preview on the other hand immediately calculates the tools for the entire image, so that the yellow frame can be moved back and forth without a renewed filter calculation.

13. Scan and batch scan

Now that you have made your most important settings, you can start the actual scan. In the horizontal bar above the preview you will find the scan button and the batch scan button. Click on "Scan" to scan the image with the red frame. Click "Batch Scan" if you want to scan multiple images.

For a film scanner without an automatic feeder, a long click on the Scan button opens a menu for selecting the scan mode.

If you start a batch scan, the export dialog opens before the scan. Here you can set some parameters for the scan. If you make a selection here, this will overwrite the settings you made directly on the image. If you do not change the default settings, the settings you have made for the individual frames are retained.



If you want to number your images automatically, select sequential naming under "File Naming" and set a starting index if necessary. SilverFast will then check for each image with this file name which is the highest number already present and add 1 for the file name.

With a click on "Export" you then start the batch scan.

14. Contact & Support

Further information about SilverFast as well as help with questions and technical issues can be found here:

Web Addresses:

- [MySilverFast Portal](#) – Here you can access your *MySilverFast* account.
- [SilverFast Website](#) – Here you will find a lot of information on our SilverFast products.

Technical Support:

- [SilverFast Support](#) – If you have any questions about handling your SilverFast software or if you have technical difficulties, please contact our SilverFast support team.
- [\(+49\) \(0\)431-56009-38](#) – If you have any questions about your *MySilverFast* account, you may call our free support hotline.



LaserSoft
Imaging

SilverFast® and LaserSoft Imaging™ are registered trademarks of LaserSoft Imaging AG, Germany. All mentioned trademarks are the protected trademarks of the respective owners.

Patents: EP 1594301, EP 1744278