

SilverFast 8 - Best Scanner Software

LaserSoft Imaging has gained 25 years experience in the development of imaging software. The redevelopment of SilverFast has built on this wealth of experience. The combination of various innovative ideas and the integration of current software technology has created SilverFast 8 which is regarded as the best scanner software.

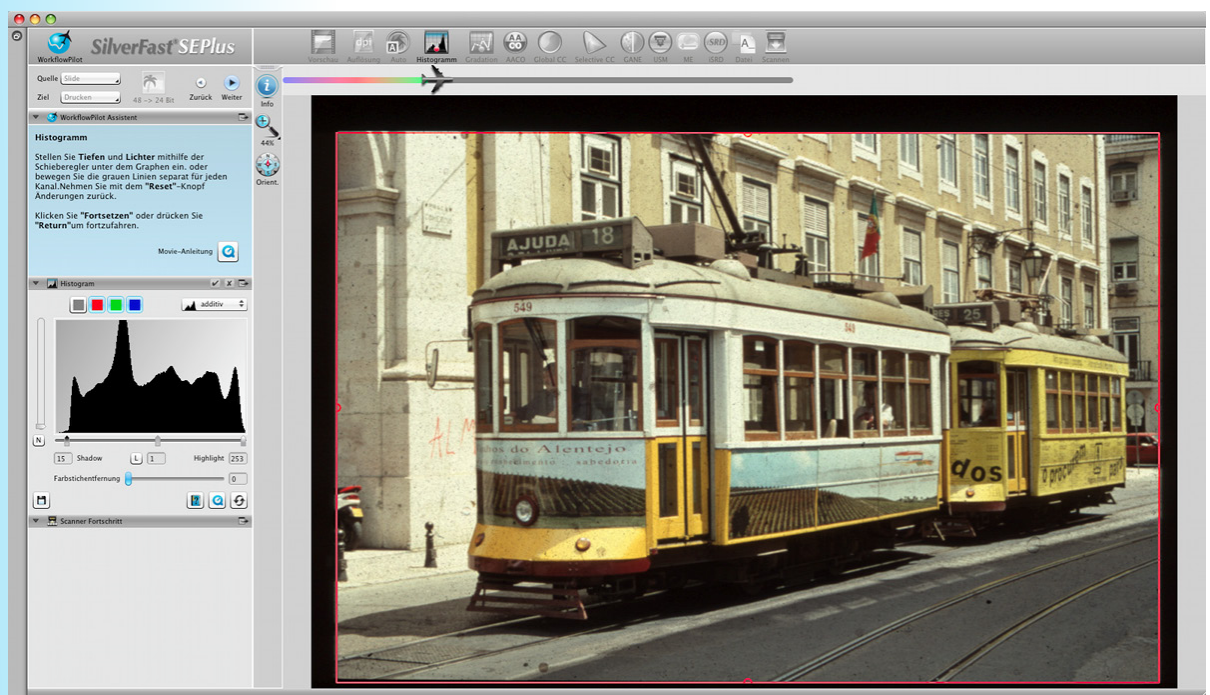
Features of SilverFast 8 - each a unique highlight



WorkflowPilot® - The WorkflowPilot is an essential core element of SilverFast 8. This novel feature, which guides the user as a kind of wizard in the correct order through all processing steps required for his individual workflow, is unique in the world. Depending on which material should be digitized for what purpose, there is a different workflow that will be worked on step by step after starting the WorkflowPilot. In addition, the user is supported by the wizard with informational texts and QuickTime movies that are directly callable from the software. The WorkflowPilot prevents potential errors in the operation, which could result from applying various tools in an incorrect order. Of course, the advanced user can also work completely free without using the WorkflowPilot.



SilverFast GUI - The user interface of SilverFast 8 is newly developed by current standards, for the user can operate all major functions quickly and easily. The GUI also offers the possibility to flexibly arrange the control elements anywhere on the screen to fit personal preferences easily by dragging and dropping using the mouse. This proves especially useful when working with two monitors. In WorkflowPilot mode, the required tool dialogs automatically open in the foreground.





Preview Concept - The SilverFast Preview Concept allows to immediately see the result of any adjusted setting in the preview window. Even the results of complicated image enhancement functions, such as iSRD for infrared-based dust and scratch removal and Unsharp Masking USM, can be assessed with SilverFast 8 in advance. A 100% zoom facilitates to properly evaluate and set the parameters of these tools.



SCC® - A selective color correction in a simple manner is possible with SilverFast SCC. A desired color is achieved as quick as a flash. The color to change is selected and immediately added with a single mouse click: Thus, SilverFast's selective color correction is particularly intuitive. For more complicated cases, there is the possibility to use scalable vector masks to perform independent color corrections on 4 layers.



Compatibility - SilverFast 8 is compatible with Windows 7, Vista and XP, and it runs natively on Mac OSX systems from version 10.5 (including 10.7 Lion). 32bit systems are as well supported as 64bit machines. The support of multi-core processors and cleverly developed calculation rules allow significant speed advantages - in some cases, SilverFast 8 is almost up to 40 times faster than the previous version.



Multi-Tasking - SilverFast 8 is multitasking capable. Thus, the user is never forced to interrupt his workflow to wait for the scanner or a complex SilverFast calculation. For example, if several originals should be scanned in a row, the user can already set the image optimization adjustments of the second scan, while the scanner captures the first original.



Auto IT8 Calibration® (LaserSoft Imaging Patent) - Just 2 minutes and 2 mouse clicks to color-consistently calibrate the scanner! A color calibration can not be more simple and accurate than the award-winning SilverFast Auto IT8 Calibration. With the IT8 Targets from LaserSoft Imaging being manufactured in house, small product batches and hand-measured targets provide excellent quality, which was confirmed by FOGRA Graphic Technology Research Association and others.





Multi-Exposure® (LaserSoft Imaging Patent) - Multi-Exposure is a revolutionary technology by LaserSoft Imaging for rapidly increasing a scanner's dynamic range. Scanning the same original twice using different exposure times clearly reveals more details and minimizes image noise.



Auto Adjust - Image optimization with just a single mouse click is, what the intelligent algorithms of SilverFast's Auto Adjust make possible. These automatic image optimization is a welcome help not just for beginners. The advanced user can customize the image automatics according to his needs.



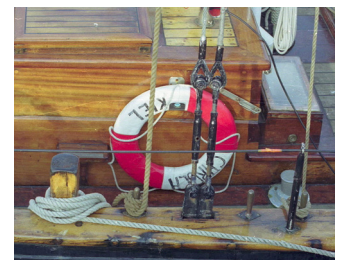
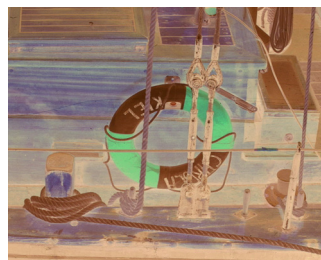
iSRD® - iSRD is a particularly reliable and comprehensive solution to remove dust and scratches with infrared technology. With a preview functionality and all parameters controllable in combination with the possibility to work on different layers, iSRD stands apart from similar tools such as ICE.



Descreening - This tool removes the printing screen every printed original contains for production reasons. Thus, unwanted Moiré effects are avoided.



NegaFix® - With well over 120 film profiles available, NegaFix guarantees best results and color fidelity in the conversion of negatives to positives.

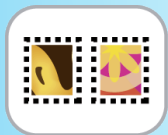




JobManager® - SilverFast's JobManager is a tool to increase efficiency in optimizing and individually adjusting images for batch scanning.



USM - The Unsharp Masking USM is a sophisticated tool for luminance-based calculation of brightness values in order to improve image sharpness without compromising color saturation and tonal values of the image. With the preview feature, the user can already assess the resulting sharpness before scanning.



Auto Frame Alignment® - Finding, framing and rectangularly aligning the originals to scan.



SC2G® - The SC2G tool converts color images into vivid, high-contrast grayscale images. The user here has the ability to assign a matching shade of gray to each color himself.



QuickTime Movies - The SilverFast movies are very helpful for beginners. They can be opened directly from the software dialogs the user is currently working at.



Neutral Pipette - By setting up to 4 neutral points, even complex color casts can be removed safely. Further adjustment options of these neutral points provide total control over this process for the user.



Kodachrome Features - Kodachrome film is particularly difficult to scan. SilverFast offers efficient tools to scan Kodachrome slides in true color, with maximum dynamic range and free of blue cast, dust and scratches.





System Requirements

SilverFast 8 is available for Mac and PC systems. The following minimum equipment is required to use SilverFast 8 without restrictions:

- OS: Apple Mac OS X from 10.5 (Intel Mac only)
or Windows XP, Vista or Windows 7
- Processor: min: 2 GHz recommended: Dual Core > 2,5 GHz
- RAM: min: 2 GB recommended: 4 GB
- HDD: min: 10 GB recommended: 25 GB
- DVD drive or internet connection
- Flatbed or film scanner, which is supported by SilverFast 8
- Recommended: Color calibrated monitor

Available Languages

SilverFast 8 is supporting the following eight languages:

- Chinese  中國
- English  ENGLISH
- French  FRANÇAIS
- German  DEUTSCH
- Italian  ITALIANO
- Japanese  日本語
- Portuguese  PORTUGUÊS
- Russian  РУССКИЙ
- Spanish  ESPAÑOL