

SilverFast - Pioneer in Digital Imaging



SilverFast[®] 8

Professional Scanner Software



ENGLISH



VLT – Virtual Light Table



VLT – Virtual Light Table

VLT, the new Virtual Light Table in SilverFast HDR 8 and SilverFast HDR Studio 8, works as an ideal link to SilverFast scanner software. Having the VLT introduced, the archiving workflow is brought to perfection. Scanner and HDR software combined add up to the SilverFast Archive Suite 8.



What exactly is the VLT?

The SilverFast VLT is a Virtual Light Table, a kind of image file browser for scanned images. The VLT is used for selecting the desired scans for image optimization in batch mode quickly and well-arranged. The customizable preview function, and the possibilities for image rating and marking facilitate this process.



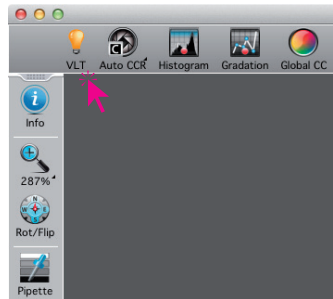
An overview of the SilverFast Archive Suite 8 archiving workflow will be found on page 5.

VLT – User Controls

When starting SilverFast HDR (Studio) 8 the VLT mode is not active by standard.

Activating/ deactivating VLT mode

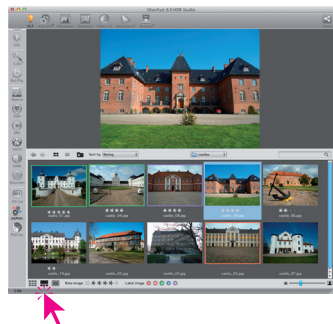
The VLT mode is activated and deactivated by left-clicking on the VLT icon at the very left of the standard toolbar. The VLT opens in the big SilverFast preview window. If the VLT is active, all other SilverFast tools cannot be used. The tool icons are colored in grey and do not react on mouse clicks. The JobManager is the only exception. .



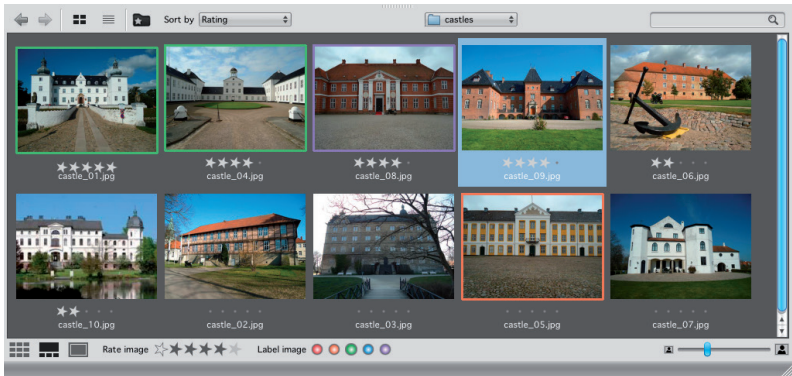
VLT mode

In VLT mode, the large preview window by default is divided into two areas. The lower half shows a thumbnail preview of all images included in the current directory. A selected image is displayed in the upper half, enlarged for a detailed view. In order to examine further details, a left-click in the image will activate a magnifying glass functionality.

- There are three buttons at the bottom left to change the view of the VLT. The image on the right shows the overview/ preview mode. In preview mode, only a single image at full-size preview will be shown. In overview mode the whole window is used for a thumbnails overview.



- Thumbnail size can be adjusted using the slider control on the bottom right.
- Performing a double click on a thumbnail will close the VLT and will open this image in the preview window for image optimization.



Import images to VLT

The VLT overview always shows the complete content of a directory on the hard disk. The VLT provides a tool for navigating through the disk directories. The fifth button in the top toolbar (right picture) opens this navigation tool.

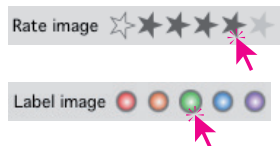
- Important or frequently used directories can be added to the navigation tool.
- The arrow buttons are used to move up a directory level (left arrow), or to return to the previously visited directory (right arrow).
- The two buttons in the middle switch view mode between overview and list view.



Mark and rate images

Using the VLT ratings and colored marks can be added to each individual image separately. These labels allow to quickly categorize all images regarding quality and image groups.

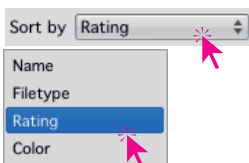
- A rating is assigned to selected images by clicking on a star in the bottom toolbar. A click on the unfilled star on the very left, removes an assigned rating.
- By clicking on one of the color dots in the bottom toolbar all selected images will be provided with a frame of this color. Another click on this color removes the color frame again.



Sort images

In overview mode, images can be sorted by different criteria. Therefore, a drop-down menu is available in the middle of the top toolbar.

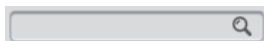
- The images of the current directory can be sorted by file name or by file type. It's also possible to sort based on the assigned ratings, and color markings..



Search images

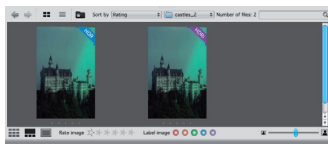
The VLT features a search functionality, which can be very helpful, if the current directory contains a big lot images. For this purpose, a search box is available on the right side of the upper toolbar.

- Intelligent search filters already start searching during search term input.



48bit HDR and 64bit HDRi images

In the overview window, scanned images, which have been saved in 48bit HDR or 64bit HDRi RAW data format, are identified with a colored banderole. HDRi images also contain the infrared data. For the following image optimization, the iSRD feature can use this information for dust and scratch removal.



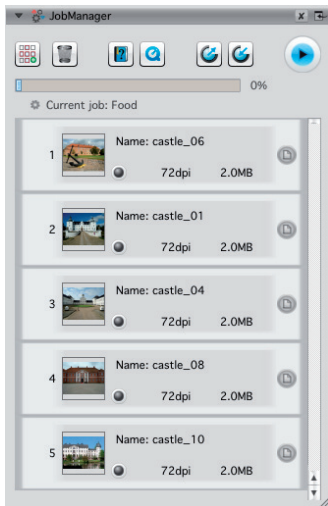
Add images to the JobManager

For image optimization, it is recommended to transfer the images from VLT to the JobManager. Using the JobManager, optimization settings can be easily copied from a single image to many others. Afterwards, a single mouse click starts batch processing all jobs.

- An image is added to the JobManager by dragging it with the mouse from the overview section right onto the JobManager button in the vertical toolbar.
- Alternatively, the image can be dragged directly into the JobManager's dialog window.
- By using drag&drop multiple images can be moved simultaneously.

Further information on the JobManager

For further information on the JobManager please also refer to our PDF manual "SilverFast 8 JobManager".

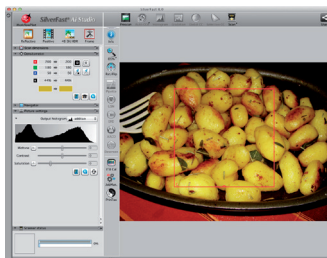


Archiving Workflow with the Archive Suite 8

1. Batch Scanning into HDRi or DNG RAW data format
2. Using VLT to select images for optimization
3. Batch processing of image optimizations

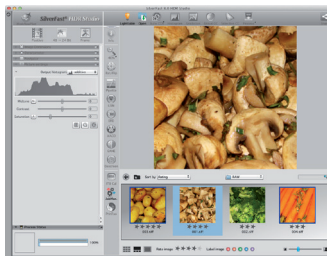
1. Batch Scanning into HDRi or DNG RAW data format

The Archive Suite Workflow is designed to initially scan all images and to do the image optimization afterwards. Depending on scanner model and the material to digitize, SilverFast's important tools iSRD and Multi-Exposure may be used therefore. Thus, all image data which is detectable at all, will be captured. An IT8 calibration in advance is recommended. Following a „non destructive workflow“, image files should be saved in RAW data format HDRi or DNG. For efficiency, SilverFast's batch scanning capabilities may come in handy. Some scanners are able to automatically digitize whole magazines of slides and negatives. Batch scanning is also available for photos by scanning multiple photos simultaneously from the flatbed. After this first step, all image data is now safely stored on the hard disk.



2. Using VLT to select images for optimization

For image optimization, SilverFast HDR (Studio) 8 is the software. Therefore, the VLT tool is perfect for sorting and selecting images, just like a real light table for mounted slides or film strips. Disk directories are easily imported using a navigation tool. An overview area shows small thumbnails of the images contained in the selected directory. There also is a zoom functionality to quickly view an image in detail. For categorization, color marks and ratings can be added to each image. Using drag&drop, those images chosen for optimization are added to the JobManager.



3. Batch processing of image optimizations

All images will now be listed in the JobManager dialog window as single job entries. Each job can be optimized as needed with the known SilverFast tools. However, the JobManager's great strength is to easily copy tool settings from one job to many others. After all settings have been adjusted, the batch processing of all jobs can be started. SilverFast performs the image optimization and saves the new image files to the hard disk.

