

Chapter 2

Overview



2. Overview

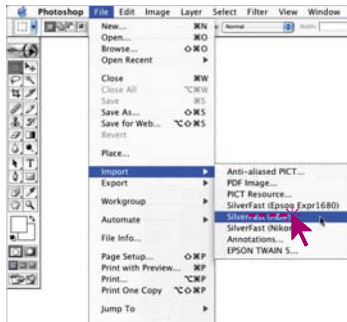
This chapter introduces into how to start *SilverFast*. It gives an overview of the *SilverFast* main dialogue and a brief explanation of the *SilverFast* tools.

2. Overview	36
SilverFast Dialogue Window	37
<i>Macintosh Version</i>	37
<i>Windows Version</i>	38
SilverFast Dialogue Overview	39
The Tool bar in the Prescan Window	40
SilverFast Tools	46
<i>Activity Indicator for Change of Setting</i>	46
<i>Rotation Tool Palette</i>	47

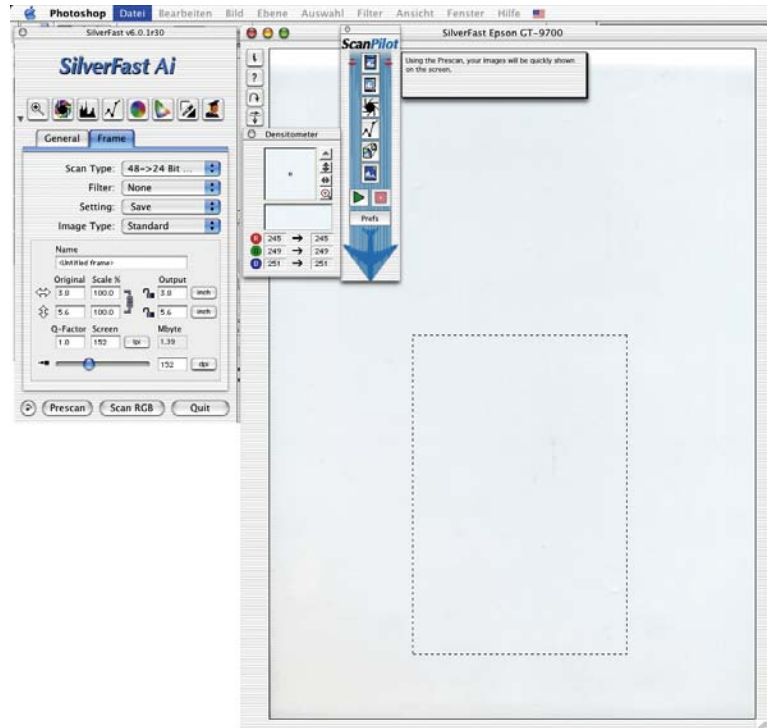
SilverFast Dialogue Window

Macintosh Version

After you have selected *SilverFast*, the following scan dialogue appears. The scan dialogue window automatically opens to the largest size possible, according to the size of your monitor.



Starting Photoshop Plug-in



By using the "resize box", the scan frame can be pulled to any desired size. After resizing the scan window it is recommended to launch a new prescan.

On Windows OS the prescan windows can be scaled by dragging or pushing the prescan frame.

Windows Version

By dragging or pushing the right or lower edge of the “prescan window” the prescan window’s size is enlarged or reduced.

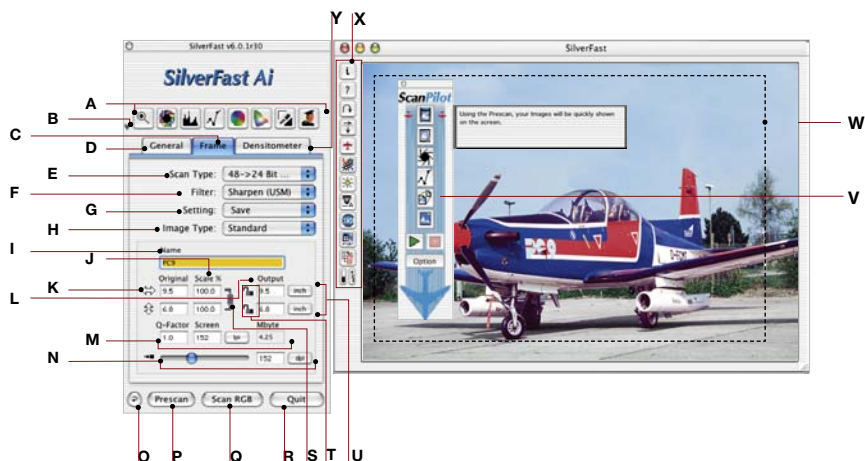


Note:

Most screen shots are taken from the Macintosh version. The Windows version user interface is, with exceptions in the “Options...” dialogue, identical to the Macintosh version. Windows keyboard short-cuts can be found in the addendum located at the end of this manual.

SilverFast Dialogue Overview

Within the *SilverFast* scan window, all adjustments are clearly visible. All important parameters may be adjusted by tools which are accessible from the tools palette occurring in the floating window on the left.



- A Tools palette:** zoom, auto-adjust, histogram, gradation, global-, selective-correction, setting highlight / shadow, expert dialogue
- B Minimize window**
- C Frame palette**
- D General palette**
- E Scan type:** colour depth, greyscale, line art, HDR chooser
- F Filter** unsharp masking, descreening
- G Scan frame parameters:** save, load
- H Image type presets:** selection of different presets
- I File name**
- J Scaling factor:** uneven scaling with open lock (image proportions will be distorted)
- K Input dimensions:** high and width corresponding to prescan frame
- L Output dimensions:** high and width corresponding to prescan frame
- M Quality factor, Output screen, Output file size**
- N Scan resolution** in dpi or dpcm
- O Reset button**
- P Prescan launch button**
- Q Scan start button, switchable to RGB, CIE Lab and CMYK scan**
- R Quit SilverFast**
- S Lock closed:** proportional scaling of the scan frame
- T Lock for fixed width or height**
- U Measurement units:** pica, point, pixel, inch or cm
- V ScanPilot window with help text**
- W Active scan frame**
- X Special functions and scanner specific functions**
- Y Densitometer palette**

The Tool bar in the Prescan Window



***/**Note**

- * availability of this feature depends on the scanner model used.
- ** IT8 calibration is included with certain scanner models, and available as an optional upgrade with others.



Info: Display of the *SilverFast* welcome dialogue with information about installation, version and activation.

By this it is also possible to return to the activation dialogue if additional functions are to be installed.



Help: Opens PDF help text files for *SilverFast*.



Prescan rotation: Rotates the pre-scanned image by 90 degrees clockwise. If the "shift" key is held down, the image will be rotated counter-clockwise. Enables the user to correctly display landscape or portrait oriented images..



Prescan / Preview mirroring: Mirrors the pre-scanned image horizontally or vertically.



ScanPilot / ImagePilot: Will bring up *ScanPilot / ImagePilot* who will automatically take you through the necessary steps to the finished scan.



JobManager: Activates the *SilverFast JobManager*



Automatic density*: This function allows the scanner to analyse the density range of the image prior to scanning and adjust the hardware correspondingly.



Focus*: The focus function can be set on “automatic” (focal point exactly in the centre of the image) or on “manual” (focal point defined by the user). The scanner will then determine the optimal focus prior to scanning and prescanning.



Eject button*: Use this button to eject the slide or the film strip, or to rewind the inserted APS film depending on the kind of document holder or film holder that has been installed. Inserting the first or the second slide can be accomplished in this manner e.g. with automatic slide feeder *SF-200*.

Dust and scratch removal*: Depending on *SilverFast* version* and scanner model different functionalities of dust and scratch removal are available. The corresponding buttons* can be found in the vertical tools bar, left hand of the big preview window.

SilverFastSRD*: All *SilverFast* versions contain *SilverFastSRD* as a means of removing dirt and scratches.

SilverFastiSRD*: This Infrared-technology for detection and removal of dust and scratches is only available for some scanners.

DIGITAL ICE technologies*: For some scanners*, the “DIGITAL ICE technologies (ICE)” may be used. It works solely with the hardware of the scanner and enables the automatic removal of dirt and scratches from the image file. Two intensities are available.



SRD/iSRD is deactivated.



iSRD is active and running in automatic mode.



SRD/iSRD is active and running in manual mode. Clicking the bottom button opens the dialogue.



SRD/iSRD is deactivated and *ICE** is active.



IT8 calibration* *: Starts the optional IT8 calibration for *SilverFast*.



Adjustment of Film Strip Position*: Serves to check the start or end of film strip, in case the motor driven film feeder has not correctly positioned the film.



Multiple scanning / Multiple sampling: Clarity can be improved while scanning difficult artwork. The image is scanned several times to determine the mean. In this manner, CCD noise, caused by thermal activity, particularly in dark areas of the image, can be significantly reduced depending on the number of samples.



VLT*: Switches in *SilverFast HDR...*, *-DC...* from the main dialogue to *virtual light table*.



Image overview dialog (Index scan)*: With the use of a film strip or an APS film feeder, *SilverFast* will automatically produce an image overview, which simplifies selection and finding a particular image.



Frame deletion: Deletes the active scan frame.



Black and white point and frame number indicator: Clicking and holding on particular areas of the button will show the black and white point or the number of the scan frame.



Print image: Commences the printing of the current scan-frame. The size of the print out may be adjusted by choosing “Output size” in the Palette “Frames”.



Red eye correction*: A tool for reducing the red eye phenomenon that occurs if pictures are taken with the flash.



QuickTime: Starts a QuickTime movie and help features for the current window.



Preview in fullscreen*: Is used to display the active image in the preview in a full screen mode, in front of a white background colour. Clicking the preview again, will close the window.



Film holder for middle formats*: Some scanners support holders for different formats. Here the buttons for the middle formats 6x4.5, 6x6, 6x7 and 6x9 cm are shown.



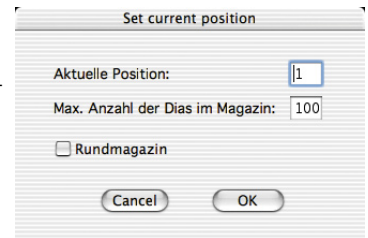
Film holder for panorama captures*: Some film scanners are delivered with special holders for panorama formats. In our example the button for a regular 35mm film (“35”), as well as the button for 35mm panorama (“35P”) are differentiated. By clicking on the respective button, the mode is changed.



Holder transport: For scanners that operate together with regular slide holders, special buttons for the transport of the holders are required.

The first button opens the dialogue box “Enter current position”. Here the current position of the magazine are to be entered (the slide case number in the cassette). The preset here is “1”.

The size of the inserted magazine can also be entered (max. “100”). The option “Round magazine” is to be selected when using such a magazine. The second button moves the film-magazine forwards and backwards. The current position of the magazine is displayed by the number that is displayed below the respective button.





SilverFast AACO (Auto Adaptive Contrast Optimization):

SilverFast AACO is an excellent tool for the correction of dark, too much contrast bearing image parts while preserving the details in the highlights.

It operates automatically when selected, but can also be manually manipulated. By this the intensity and the complexity of the shadows that are to be lightened can be adjusted without affecting the highlights of the image.



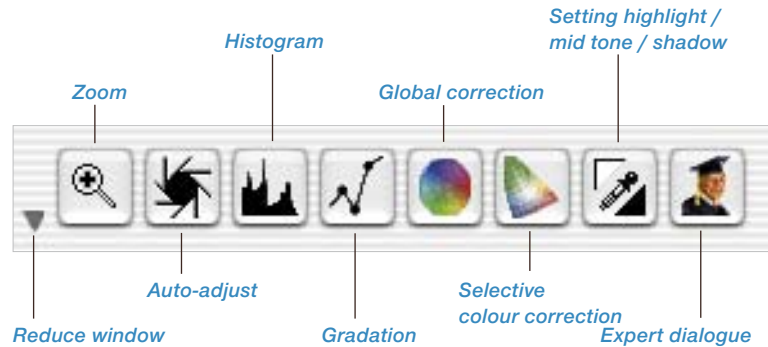
Clone tool: A powerful 16 bit clone tool which extends the already implemented *SRD* function has now been developed. By this, large interferences on the image can be repaired or even completely removed from the image.

SilverFast Tools

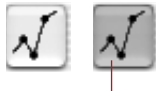
With correct use of the *SilverFast* tools selectable from the palette, all image influencing operations can be completed. In most cases, the auto-adjust will lead to satisfactory results. However, if you should wish to short-cut the image adjustment process, simply click on the auto-adjust tool to activate *SilverFast*'s colour analysis engine for instant results.

Keyboard short-cuts

You can also bring up each of the tools by keyboard short-cuts (listed at the end of the manual).



Activity Indicator for Change of Setting

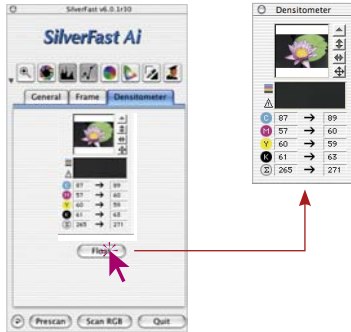


Activity indicator

The icons turn dark grey when the settings have been changed. Even on large monitors it can also immediately be determined whether settings have been changed or not and in which tool they have been changed.



Rotation Tool Palette

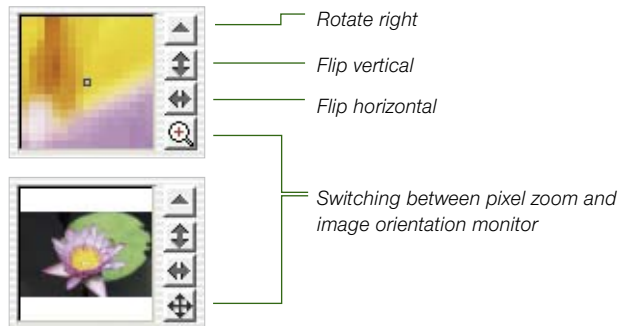


The palette for orientation of the image can be found on the densitometer index card or in the densitometer window.

Here you can may assess how the respective image shall be oriented in its output. This may be a rotation in 90° steps or a vertical or horizontal reflection.

Attention! The adjustments shown here always overwrite the settings shown in the vertical column heading panel, left of the prescan window.

Hence it is possible to display the prescan image in landscape format but let it be scanned in portrait format by means of the densitometer buttons. This has advantages when working with large scan areas. The entire scan bed may be used regardless of the orientation. The prescan may be rotated for each image. The output orientation is simply set in the densitometer.



Clicking onto the small zoom button switches back to the image orientation window to show the degree of rotation / flipping.



By clicking onto the small up-headed triangle the image will be rotated 90° clockwise during scanning (the triangle turns red and points to the right). Each click on the rotation icon will rotate the image another 90° clockwise.

In order to rotate counter clockwise, hold the “Shift” key and click on the rotation tool (triangle).



