

SilverFast - Pioneer in Digital Imaging



SilverFast[®] *Ai Studio 8*

Professional Scanner Software



ENGLISH



fully automatic



high-quality Targets



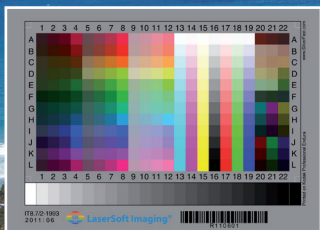
barcode technology



without IT8 Calibration



with IT8 Calibration



Get precise colors with LaserSoft Imaging IT8 Targets

„It can be stated that all IT8 Targets from LaserSoft Imaging have excellent quality. They are perfectly suited for scanner calibration and fulfill highest quality requirements.“

Dietmar Wueller, Image Engineering



Mit dem patentierten Barcode auf den IT8-Targets von *LaserSoft Imaging* funktioniert jede IT8-Kalibrierung vollautomatisch und fehlerfrei. Durch kleine Chargen in der Produktion sind diese Targets zudem präziser als viele Targets anderer Hersteller.



The patented barcode technology on the IT8 Targets from *LaserSoft Imaging* allows every IT8 calibration to be performed automatically and accurately. Through small batches in production these targets are much more precise than those of many other manufacturers.



La technologie breveté de code-bar sur les mires IT8 de *LaserSoft Imaging* permet d'effectuer un étalonnage du scanner entièrement automatique et sans erreur. Grâce à la production limitée nos mires sont plus précises que ceux d'autres fabricants.



Con el código de barras sobre los Targets IT8 de *LaserSoft Imaging* cualquier calibración IT8 funciona completamente automática y sin faltas. Gracias a la producción interna estos targets son mucho más precisos que los targets de otros fabricantes.



Con il codice a barre brevettato nei Target IT8 della *LaserSoft Imaging*, ogni calibrazione IT8 funziona in modo completamente automatico e senza errori. Trattandosi inoltre di prodotti in piccole serie, questi target sono più accurati di quelli di molti altri produttori.



Com o código de barras patenteado nos Targets IT8 da *LaserSoft Imaging*, a calibração transcorre automaticamente e sem erros. Devido à produção em séries pequenas, estes targets são mais precisos do que muitos de outros fabricantes.

More info & upgrade on www.SilverFast.com



SilverFast® Software License Agreement

Do not open the software package and do not use the SilverFast® software until you have read and agreed to the terms and conditions of this Software License Agreement. If you do not agree with these terms and conditions, immediately return the unopened software sealed in its original packaging to LaserSoft Imaging AG. SilverFast® is a software package comprising software and supporting documentation for a method of generating an image file for the subsequent production of color separations or print files. This is a license and not a purchase agreement. LaserSoft Imaging AG has developed SilverFast® and is the owner of all rights in the software and the copy thereof:

1. Copyright

(1) The licensee acknowledges that LaserSoft Imaging AG is the owner of the copyright in the software both with regard to the source and the object code.
(2) The documentation and the software are copyrighted. Unauthorized use, including the use of all visual and video material, gives rise to claims for compensatory damages.

2. License

(1) LaserSoft Imaging AG grants the licensee an exclusive and non-transferable license to use the software object code of SilverFast and the supporting documentation supplied for his or her own personal use. The term of the license is limited to the term of this Software License Agreement.
(2) With this license the licensee is authorized to use the licensed product on a single personal computer at a time. In order to use the licensed product on multiple processors and/or at different places at the same time, several licenses are required.
(3) The licensee is not allowed to copy the software in whole or in part except for the purpose of making a backup copy for personal use. The same applies to the documentation.
(4) The software contains confidential information. With this license the licensee may not alter, adjust, decompile, disassemble the software nor in any other way try to find out the source code.
(5) The licensee may not rent, lease, sublicense or lend the software to third parties. Passing on of the software in any case requires the written approval of LaserSoft Imaging AG. LaserSoft Imaging AG will grant approval provided (a) the licensee presents a written declaration of the new user in which the new user undertakes to adhere to the license agreement concluded for the software and (b) the licensee does not retain any (backup) copies and warrants to LaserSoft Imaging AG in writing that the licensee passed on original copies of the software to the third party and deleted all copies the licensee made.
(6) LaserSoft Imaging AG may include a licensee's company name and logo for public relation and marketing for the purpose to name the licensee as a LaserSoft Imaging AG customer.

3. Effective Date and Term of the License

(1) This license takes effect on the day the software package is opened. It remains in force until the day LaserSoft Imaging AG or the licensee terminates the License Agreement.
(2) This License Agreement may be terminated as follows:
(a) LaserSoft Imaging AG may terminate this license upon written notice to the licensee if the licensee is in breach of this Agreement or parts thereof.
(b) The licensee may terminate this license upon written notice to LaserSoft Imaging AG under the terms and conditions of No. 4, if he/she returns the opened software package to LaserSoft Imaging AG and deletes the copy on his/her PC and the copy he/she may have made for backup purposes.

4. Warranty

(1) The software is provided "as is". LaserSoft Imaging AG does not warrant – neither expressly nor implied – the usability of the software for a particular purpose nor that the software meets the licensee's requirements. Although every development effort has been made to eliminate errors, LaserSoft Imaging AG does not warrant that the software is free of defects.
(2) The licensee shall examine the software for visible, major defects within 14 days. These defects must be notified to LaserSoft Imaging AG in writing. Hidden defects are to be notified in the same manner upon detection. Otherwise software and supporting documentation are deemed to be approved without reserve.
(3) In the event of major defects LaserSoft Imaging AG may at its discretion either deliver a new version to the licensee (replacement delivery) or rectify the defect within a reasonable period of time (rectification of defects). If LaserSoft Imaging AG does not succeed to allow contractual use of the software within this given period, the licensee has the option to request reduction of the price or to cancel the contract.
(4) Upon assertion of warranty claims the licensee is obliged to return the software together with the notice of receipt at the charge of LaserSoft Imaging AG.

5. Limitation of Liability

(1) LaserSoft Imaging AG assumes full liability for intent or gross negligence, for personal injury or death, under the stipulations of the German Product Liability Act (Produkthaftungsgesetz) as well as within the framework of a warranty granted by LaserSoft Imaging AG.
(2) In the event of a slightly negligent breach of an obligation which is essential in order to fulfill the contractual purpose (cardinal obligation) the liability of LaserSoft Imaging AG shall be limited to the amount of the damage foreseeable and typical for the kind of transaction in question.
(3) Any liability of LaserSoft Imaging AG beyond that is excluded. In particular LaserSoft Imaging AG shall not be liable for any initial defects provided the conditions of part 1 and 2 are not met.
(4) The limitation of liability stated above also applies to the personal liability of employees, representatives and bodies of LaserSoft Imaging AG.

6. Trademarks

SilverFast and other trademarks (including those of other companies) mentioned in the documentation are (registered) trademarks of LaserSoft Imaging AG or their respective owners. The use of these names, trademarks, logos, documentation, screenshots etc. requires approval by LaserSoft Imaging AG and/or the respective owners of the trademarks. Unauthorized use gives rise to claims for compensatory damages.

7. Ineffective Provisions

Should individual provisions of this Agreement, for any reason, be or become ineffective, or should a gap arise that needs to be filled, this shall not affect the remaining provisions of the Agreement. A provision that is closest in the scope of the legal possibilities of what the parties originally intended shall replace the ineffective provision or shall fill the gap, if necessary also retrospectively.

8. Amendments

Amendments to this Agreement shall be made in writing.

9. Applicable Law

This Agreement is governed by German law. Application of the United Nations Convention on Contracts for the International Sale of Goods (CISG) is hereby expressly excluded.

Preface



Dear Customer,

We are pleased that you have chosen a quality product from LaserSoft Imaging. Meanwhile for almost 20 years, we are developing and distributing our imaging software SilverFast, which is long considered as the world- wide standard especially in the field of scanner software.

The WorkflowPilot which has been specially developed for SilverFast 8 can be described as quintessence of the experience our experts have gained over decades. This intuitive-to-use tool guides you in the correct order through all steps that are required for your individual workflow. The WorkflowPilot was inspired from my experience as a Pilot with a commercial license. Pilots are using check lists assuring and safeguarding the success of all operations in aviation. Likewise we are now giving you, as SilverFast user a safeguarding process to achieve brilliant results with all your images.

Optional in SilverFast 8.5 you can now have Printer-Calibration enabling creation of ICC-Profiles for precise colour printing.

The SilverFast Preview Concept makes it especially easy to work with SilverFast. Any change you carry out is immediately visible in the preview window. You will enjoy the full range of functionality with our pro-level version SilverFast Ai Studio including Multi-Exposure and all other SilverFast features. Nevertheless, the range of functionality with unique highlights such as NegaFix®, SRD® and iSRD® leaves nothing more to desire. Valuable additional features such as Auto IT8 Calibration and expert mode ensure, that SilverFast Ai Studio satisfies even the highest demands.

Have fun and success digitizing your slides, photos and negatives with your new SilverFast software.

« SilverFast - Pioneer & Expert in Digital Imaging »

Sincerely yours,

Karl-Heinz Zahorsky

President and Founder of LaserSoft Imaging, Kiel, Germany, August 2015

Support and Contact Information

Homepage: <http://www.SilverFast.com>

Online Support: <http://www.SilverFast.com/support>

Forum: <http://forum.SilverFast.com>

Support Hotline: (+49) (0)431-5600938

Fax: (+49) (0)431-562847



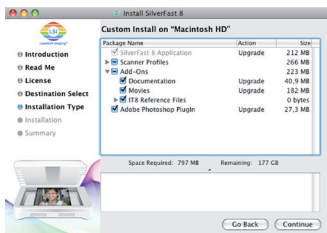
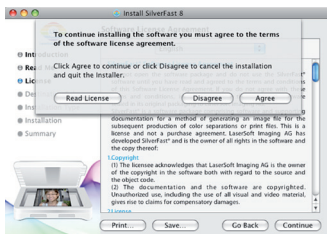


Please install the manufacturers scanner drivers before you start the installation of SilverFast 8.
Exception: This step is not necessary for devices from Nikon and reflecta.

Installation on Apple Mac OS X

SilverFast 8 supports Intel Mac (OS X v10.5 - 10.10)

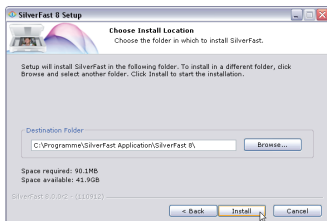
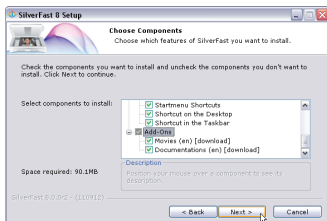
- Insert your SilverFast DVD into a drive or download the accordant file from the SilverFast website. Start the installation program.
- Please read the „Important Information“ that will be displayed at the start of the installation process. Afterwards, please read and accept our licensing agreements.
- Next, you can decide which additional components such as QuickTime movies or documentation files should be installed. To do this, simply tick the appropriate checkboxes.
- Click on "Install" and SilverFast is copied to your Mac.
- Before using SilverFast for the first time, it is important that you serialize your version. Please refer to the section "Serialization & Registration".



Installation on Microsoft Windows

SilverFast 8 supports Windows 8, 7, Vista and XP

- Insert your SilverFast DVD into a drive or download the accordant file from the SilverFast website. Start the installation program.
- First, select a desired language.
- Please read and accept our license agreements.
- Next, you can decide which additional components such as QuickTime movies or documentation files should be installed. To do this, simply tick the appropriate checkboxes.
- Choose a location on your hard drive you want SilverFast to be installed to.
- Click on "Install" and SilverFast is copied to your PC.
- After the installation you can open the "Read Me" file that contains some important information.
- Before using SilverFast for the first time, it is important that you serialize your version. Please refer to the section "Serialization & Registration".



Serialization

Before you begin to work with SilverFast, a serialization, which means entering the serial number you received when purchasing, is required.



Please switch on your scanner before you start SilverFast 8.

- Switch on your scanner, then start SilverFast 8.
- Choose your scanner under "Image Source".
- Choose your language under "Language Selection".
- Click the "Start" button.

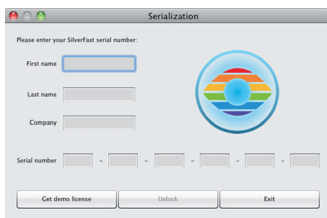


When you are starting SilverFast for the first time, a dialog window for entering your serial number opens.

- For serialization please enter your first name, last name and serial number.
- Afterwards click on "Unlock", please.
- SilverFast 8 is ready for you.



Please enter your first name and last name, which you have used for purchase. If you have purchased SilverFast on DVD, please insert it into your DVD drive.



If you do not have a SilverFast 8 serial number yet, you can also ask for a demo license to test SilverFast for 30 days at this point.

Registration

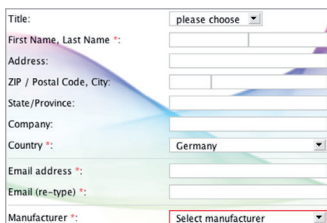
After serializing SilverFast, we offer the opportunity to register SilverFast online. Therefore, a dialog window opens automatically.

Once you have registered SilverFast, you can download regular program updates free of charge from our website.

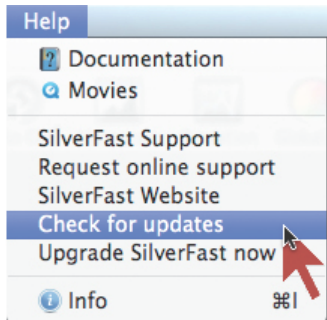
During the registration, we recommend you to subscribe to our newsletter. We will send great offers and interesting and useful information individually for your scanner about every two months.

Update to latest SilverFast release

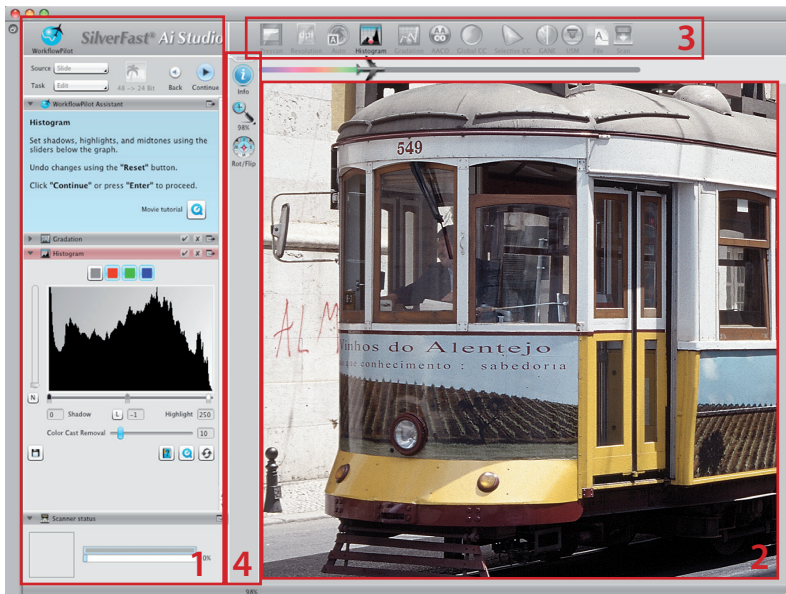
Under SilverFast's „Help-Menue“ in the top menu-bar you can check whether a new version of SilverFast is available and download the enhanced version for free.



- Yes, please. I'd like to receive the SilverFast newsletter (approximately 6 times a year).
- No, thanks. I don't want to receive your newsletter.



SilverFast 8 Concept: New WorkflowPilot



1. Controls Dock 2. Preview Window 3. Standard Toolbar 4. Special Toolbar

Heart of SilverFast® 8 is the unique WorkflowPilot. A consequent evolution of the established ScanPilot has developed into this modern high-end workflow tool for the process of scanning, inspiring beginners and professionals alike.

Tightly integrated into SilverFast, the WorkflowPilot guides through all the necessary processing steps in correct order, thus allowing perfect scans to be made.

Depending on the material and the purpose you want to digitize it for, there are different workflows accordingly. Just follow step by step after starting the WorkflowPilot. This way, potential errors, which could result from applying the SilverFast's tools in a wrong sequence, will be avoided. As an advanced user, you may, of course, work completely independently without using the WorkflowPilot.

Activating / Deactivating the WorkflowPilot

- A mouse-click on the symbol in the upper left controls dock activates or respectively deactivates the WorkflowPilot at any time.
- We recommend in general, but especially for beginners, to activate the WorkflowPilot.



active



inactive



When switching from manual mode to the WorkflowPilot mode, all previously made adjustments are discarded.

SilverFast 8 Concept: Control Elements

Following section presents the main components of the SilverFast 8 User Interface.

1. Controls Dock

The controls dock contains a series of dialogs that let you configure the SilverFast tools. By clicking on the arrow button, you can expand and collapse any dialog.

If you are using the WorkflowPilot, the controls dock will automatically open the relevant tool dialog which is the next step of your workflow.

By setting or removing the check-mark, you can activate or deactivate any tool respectively.

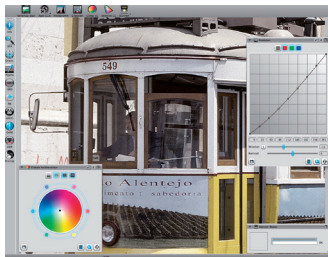
The "x" button terminates a tool entirely. Actual settings will be lost.



2. Preview Window

The large preview window is always showing your current PreScan. Here, each image optimization is simulated in real time. Thus, you always have a good preview of the final scan result on screen.

You can also use available space in the preview window to place and arrange dialogs from the controls dock. Therefore, use your mouse to simply drag a dialog to the desired location. Click on the "dock" (↔) button and the dialog will move back to the controls dock.



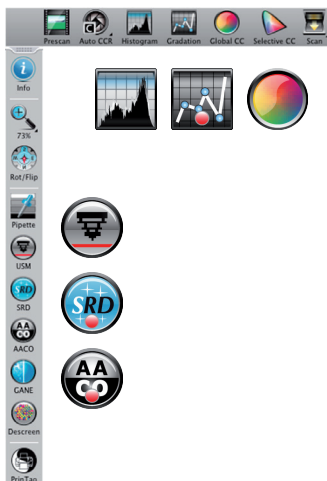
3. Standard Toolbar

The horizontal toolbar contains the standard tools you might need quite often. A red dot inside the symbol indicates that this tool is active and an image optimization has been performed.

If you use the WorkflowPilot other special tools necessary for your workflow will appear here. You will step through these tools from left to right, with the active one displayed in color.

4. Special Toolbar

The vertical toolbar contains some additional special features that are not required for every image original. Here also, active tools are marked with a red dot.

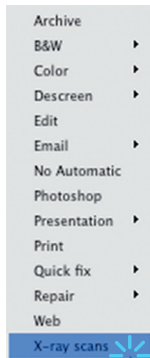
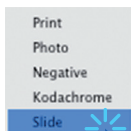


The 5 steps of Scanning using the WorkflowPilot

1. Select type of original and scanning purpose
2. Preview Scan
3. Select Resolution for Scanning
4. Adjust Image Optimizations
5. Choose Destination and Start Scanning

1. Select Type of Original, Scanning Purpose and Color Mode

- At first, select in the controls dock under Source, which kind of original you would like to scan. Depending on your Scanner, you can choose from "Print", "Photo", "Negative", "Kodachrome" or "Slide".
- Secondly, pick a purpose for which your scan is intended under "Task". Choose between "Archive", "Edit", "Print", "Web" and other options such as "Quick fix" for rapid repair of problematic originals.
- Use the Color Mode button next to Source and Task to determine whether you want to create a color scan or a black and white scan.



2. Preview Scan

- Start the WorkflowPilot using the "Start" button in the controls dock. The WorkflowPilot will guide you through all necessary processing steps, depending on your previous settings. Initially, a preview scan is generated and displayed in the large preview window.
- Afterwards, use your mouse to drag the red scanning frame to the desired size. Make sure that the scanning frame is completely inside the original and that it does not include any white or black area of the preview window outside the original.
- A dialog with controls for adjusting SilverFast's tools will open in the controls dock on the left for every processing step. Each dialog contains buttons to save your adjustments, to reset your changes and to directly open a corresponding help file and a QuickTime movie explaining how to use this tool.
- Click on the "Continue" button in the controls dock after each individual processing step to continue with the next SilverFast tool. The WorkflowPilot allows to use a "Back" button to return to the previous processing step at any time. Your current settings will be retained.



Start



Save
Settings



Reset values to
defaults



Open help / tuto-
rial PDF



Open tutorial
QuickTime movie



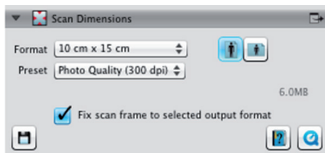
Back



Continue

3. Select Resolution for Scanning

- Select format and resolution of your scan in the window “Scan dimensions” that has opened in the controls dock.
- For printing with inkjet or laser printer a resolution of 200 to 300 dpi is recommended, for archiving, choose a higher resolution respectively.



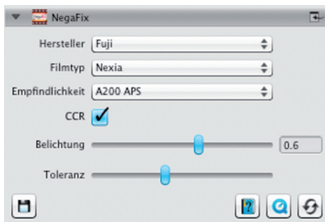
If you have selected “Negative” as image source, you will additionally find the “NegaFix” dialog below. Select the manufacturer, film type and exposure speed of your negatives.

4. Adjust Image Optimizations

- Depending on the selected workflow the WorkflowPilot will guide you step by step through a set of standard tools that allow you to perform various image corrections. Any change is directly visible in the large preview window in real time and true to color.



If you selected “Archive” as the destination format, the image data is archived unchanged. You can proceed directly with Step 5.



In the Ai Studio version, every tool dialog features an additional button to activate the expert mode.

The expert dialog provides advanced functionality for fine adjustments.

4-1. Automatic Image Optimization



The intelligent SilverFast Auto Adjust starts now to analyze your original and automatically applies different SilverFast tools for image optimization.

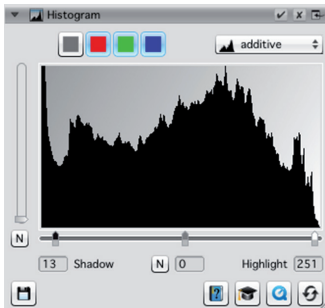
- You can modulate these adjustments during the following steps 4-2. to 4-11. or you can reset them at all to make your own changes.

4-2. Histogram



The histogram shows the frequency of tonal values that occur in an image as a metrical scaled diagram of vertical bars. It provides information about contrast range and brightness of the image. The histogram can be used to easily remove under- and overexposure.

- There are three sliders below the histogram. Move the left slider to adjust the black point and the right slider to adjust the white point. The button “N/L” is used to switch between linear and logarithmic representation.



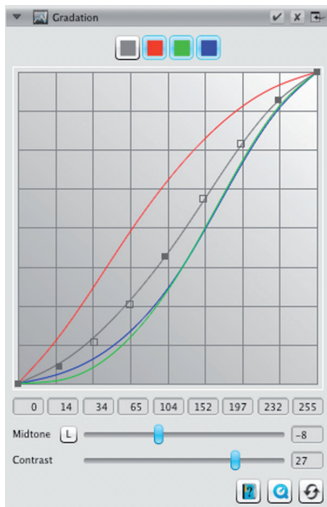
- If you like to adjust the histogram for a RGB color channel separately, select it with respectively colored button above the curve. The gray button stands for all three color channels.
- The slider “Color Cast Removal” removes color casts the more it is pushed to the right.

4-3. Gradation



In photography the gradation or density curve describes the relationship between exposure and optical density of the film. The slope of the curve is called gamma value, the difference between maximum and minimum density is called density range. Adjusting the gradation curve can work out more details in shadows and highlights.

- Move the midtone slider below the curve to control the overall brightness. You can also adjust the contrast with the corresponding slider. For fine tuning you can directly move the curve control points with your mouse.
- If you like to adjust gradation of any RGB color channel separately, click onto any of the red green or blue button above the curve. The gray button stands for all three color channels.



4-4. AACO (Auto Adaptive Contrast Optimization)



AACO is a tool for correcting contrast in darker image areas without influencing details in lighter areas. Thus, AACO can be very useful to uncover more details in dark areas.

- Use “Strength” slider to adjust the power of the contrast optimization effect. “Shadow width” defines the tonal value threshold for applying the correction.



4-5. GCC (Global Color Correction)



Control the color balance of the whole image with SilverFast Global Color Correction (GCC). Color casts, that often appear on older film and slides, can already be removed before scanning.

- For a global color correction simply move the black dot inside the color wheel to a suitable position. Any change is immediately displayed in the preview window.
- For fine tuning you can use your mouse to click on one of the color patches positioned around the color wheel. The color balance of the image will then shift towards that color.

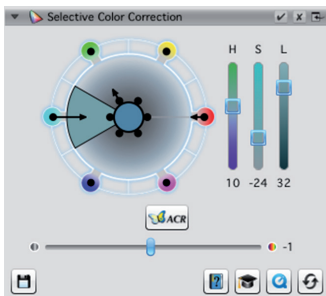


4-6. SCC® (Selective Color Correction) ACR (Adaptive Color Restoration)



By using the Selective Color Correction (SCC) it is possible to specifically change and optimize individual colors without affecting any other colors. The Adaptive Color Restoration (ACR) is a tool to correct pale, faded colors and also to adapt super-saturated colors.

- Select the color you want to adjust by clicking into your picture. Then choose from the corresponding pop-up list which of the entries best describes the color change that you intend to apply. As an example, the entry "greener +" is a major shift of the chosen color towards green than just "greener" is. Afterwards, adjust the color to your preference using the vertical Hue slider.
- Click on the "ACR" button for an automatic color restoration or adjust the color saturation yourself using the horizontal slider.

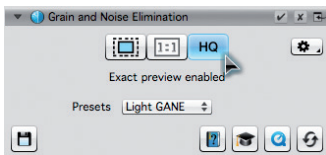


4-7. GANE® (Grain and Noise Elimination)



At very high scan resolutions, the film grain of the photographic material can become visible on the scan. Similarly unattractive is the noise that can occur with digital recording processes for various reasons. The grain and noise suppression (GANE) eliminates these effects or reduces them significantly.

- The GANE® Grain and Noise Elimination can be adjusted in three stages. Choose from presets "Light GANE", "Medium GANE" or "Strong GANE" for a light, medium or strong noise reduction.
- For previewing your settings, a detailed PreScan of a representative image section is required. Therefore, click on the "1:1" button.



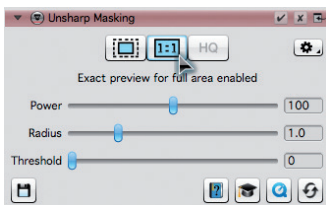
HQ (High Quality) Preview renders the 1:1 selection for the whole image for the Filter chosen (GANE, USM or iSRD). You can move the yellow frame in the Navigator while viewing the rendered image selection in „Realtime“.

4-8. USM (Unsharp Masking)



Unsharp Masking is a name for a method of increasing an image's sharpness with a blurred copy of that same image. SilverFast uses additional parameters such as brightness values for sharpening, so that saturation and color values of the image are not affected.

- Select an appropriate level of sharpening with a preset from "Lowest Auto Sharpness" to "Highest Auto Sharpness" in the controls dock or define the exact degree of sharpening using the slider directly.
- For previewing your settings, a detailed PreScan of a representative image section is required. Therefore, click on the "1:1" button.

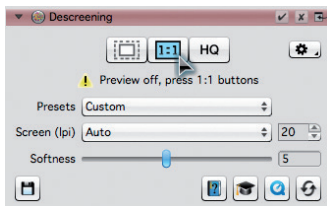


4-9. Descreening



Printed originals will always have a screen that is created during the printing process from the individual printer dots. When scanning with high resolution this screen can become visible and overlap with other screens to become annoying Moiré effects. The SilverFast Descreening can automatically detect and remove this printing screen.

- If you know the printing screen of your original, you can directly set it in the controls dock. Select the menu item "Custom" from the "Screen" menu and adjust the screen in lpi. If you don't know your original's screen, select the menu item "Auto" or a suitable default value.
- Below you will find a slider that is for determining the threshold from which the descreening functionality is taking effect.
- For previewing your settings, a detailed PreScan of a representative image section is required. Therefore, click on the "1:1" button.

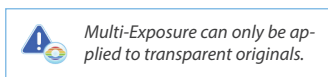


4-10. SilverFast Multi-Exposure®



The Dynamic Range, i.e. the number of gray levels of transparent originals can be so large that conventional scanners can not completely capture it. In this case image details are lost especially in the shadows. SilverFast Multi-Exposure increases the scanner's effective Dynamic Range by performing two scans with different exposure times. These two scans are then merged to become the final enhanced image.

- You can activate and deactivate Multi-Exposure by clicking onto the icon in the standard tools bar above the preview window. Multi-Exposure requires more time for performing the scan, but in return, visibly improves the results.



active



inactive

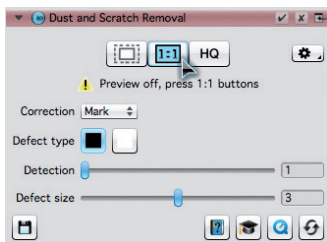
4-11. iSRD® (infrared based Dust and Scratch Removal)



Slides and negatives often have minor scratches or dust particles that can get very striking by the magnification of scanning. iSRD uses the scanner's infrared channel to detect these defects, which an intelligent algorithm then removes from the image. SRD in contrast does not require an infrared channel.



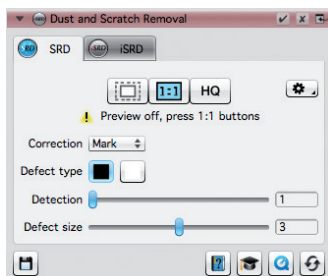
- Select "Automatic" from the "Correction" menu in the iSRD dialog to use iSRD in automatic mode. If you want to adjust the strength of defect detection yourself, select menu item "Correct". Use the slider "Detection" below to adjust detection strength.





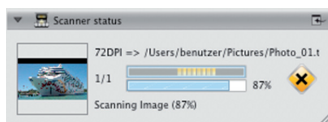
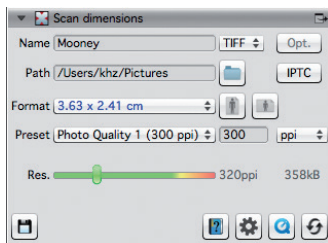
iSRD can only be applied to transparent originals, SRD also to reflective originals.

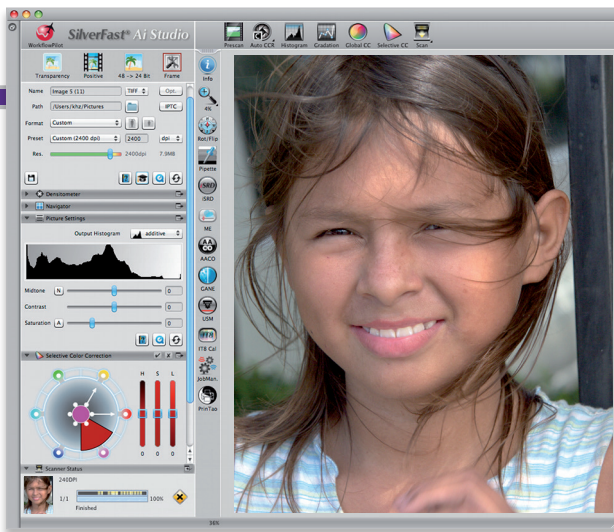
- SRD is very similar to use, but there is no automatic mode. Besides the defect detection strength you have to use two additional sliders to also set the size from which and the intensity with which defects shall be treated.
- Use the black and white buttons to determine whether dark, light, or both types of artifacts are to be corrected.
- For previewing your settings, a detailed PreScan of a representative image section is required. Therefore, click on the "1:1" button.



5. Choose Destination and Start Scanning

- Choose your desired file format (TIFF, PSD, JPEG, JP2) from the drop-down menu in the controls dock. Use the "Opt." button to adjust file format settings where necessary.
- Use the text field "Name" to type in a name for the image file to be created and click on the folder icon button to choose a folder, where you like to save your scan. Alternatively, you can directly enter the destination for your scan in the text field "Path".
- All important settings are adjusted now and you can start the actual scan. Therefore, click on the "Continue" button in the upper controls dock.
- A progress bar informs about the remaining time required for the scan. Afterwards, the image file is stored on your hard disk and SilverFast is reset enabling you to continue with the next scan.
- If you have accidentally started the scanning process, you can abort it with a mouse click on the yellow "Cancel" button.






LaserSoft Imaging AG
 Luisenweg 6-8 • 24105 Kiel • Deutschland
 Tel.: (+49) 431-56009-0
 Fax: (+49) 431-56009-96
 Support: www.SilverFast.de/support
 Info: www.SilverFast.de

Systemanforderungen:

- Mac OS:
- Intel®-Prozessor
- Mac OS X v10.5 bis 10.10
- Windows:
- Prozessor: Minimum 2 GHz
- Microsoft® Windows® XP mit Service Pack 3, Windows Vista® Home Premium, Business, Ultimate oder Enterprise (32 Bit und 64 Bit), Windows 7 oder Windows 8 (32 Bit und 64 Bit)
- 2 GB RAM (4GB RAM empfohlen)
- 10 GB freier Festplattenspeicher
- 1024 x 768 Bildschirmauflösung
- DVD-ROM-Laufwerk
- QuickTime®-Player, PDF-Reader

*SilverFast wird individuell an Scanner und Betriebssysteme angepasst. Bitte überprüfen Sie die Verfügbarkeit der Software und Features für Ihr Gerät und Betriebssystem unter:

www.SilverFast.de/sf/product

SilverFast® und LaserSoft Imaging™ are registered trademarks of LaserSoft Imaging AG, Germany. All mentioned trademarks are the protected trademarks of the respective owners (Patents: EP 1594301, EP 1744278).


LaserSoft Imaging, Inc.
 7441 N. Tamiami Trail • Sarasota • FL 34243 • USA
 Phone: (+1) 941-351-9400
 Fax: (+1) 941-351-9402
 Support: www.SilverFast.com/support
 Info: www.SilverFast.com

System Requirements:

- Mac OS:
- Intel®-Processor
- Mac OS X v10.5 through 10.10
- Windows:
- Processor: Minimum 2 GHz
- Microsoft® Windows® XP with Service Pack 3, Windows Vista® Home Premium, Business, Ultimate or Enterprise (32 bit and 64 bit), Windows 7 or Windows 8 (32 bit and 64 bit)
- 2 GB of RAM (4GB of RAM recommended)
- 10 GB of available hard-disk space
- 1024 x 768 display resolution
- DVD-ROM drive
- QuickTime® Player, PDF Reader

*SilverFast is individually adjusted to scanners and operating systems. Please check the availability of software and features for your device and operating system at:

www.SilverFast.com/sf/product

