

*SilverFast - Pioneer in Digital Imaging*



# SilverFast<sup>®</sup> 8

Professional Scanner Software



ENGLISH



## Batch Scan

Automatic Document Feeder



## SilverFast 8 Batch Functionality

Some film scanners are able to feed in small and medium format slides or filmstrips automatically. This means, the user does not have to transport the filmholder from image to image by hand, but presses a button on the scanner or controls the feeder by software.

Some scanners feature this functionality ex factory, where other devices can be equipped with Batch capability by installing optional accessories. A few scanners are capable of automatically digitizing whole magazines that contain up to 40, 50 or even 100 slides. Batch functionality is time efficient and it is particularly suitable for creating RAW data archives, leaving any image processing for a later date.

As scanners, which have an automatic document feeder, differ by type and function of their respective feeders, also the operation with SilverFast 8 is slightly different from scanner to scanner. Thus, not every button and feature described herein is available for every Batch-enabled scanner.

## Using the Batch Function

- Open your SilverFast Ai Studio 8 software. Batch functionality is not provided for the WorkflowPilot mode. So, initially turn off the WorkflowPilot, if you want to run an Batch scan. Therefore, please click on the WorkflowPilot icon at the top left. A red icon symbolizes, the WorkflowPilot has been deactivated.
- **Preferences:** In the "Auto" tab of SilverFast's general "Preferences" you can choose, whether Auto Image Optimization and Auto Frame Detection should be applied to each single image of the Batch scan.
- **Preparing an Batch scan:** The vertical tool bar just left to the preview window contains the special tools. At the very bottom you will find the buttons for controlling the Batch functionality:
- **Eject filmholder:** Using this button you signal the scanner to eject the filmholder or filmstrip, for example if you would like to change the image material.
- **Next image:** Clicking this button moves the filmholder a position forward to the next image.
- **Previous image:** Clicking this button moves the filmholder a position backward to the previous image.



*The Batch functionality is only included with the Ai Studio version of SilverFast 8 and it is only used by scanners featuring an automatic feeder. A list of compatible scanners can be found on the last page of this document.*



*The Batch functionality slightly differs from scanner to scanner. Not every feature described here is available for every device.*



WorkflowPilot inactive



Eject filmholder/ filmstrip



Next - Load next image

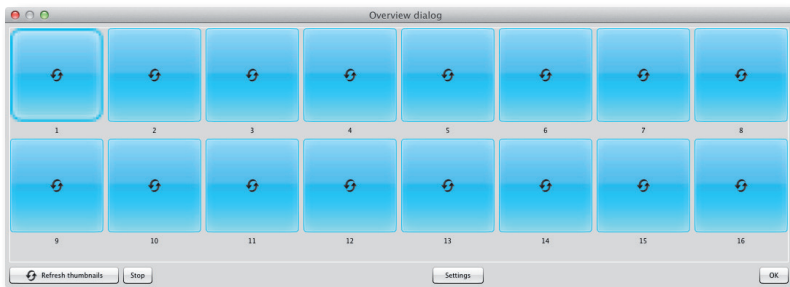


Previous - Load previous image

- **Overview:** By clicking on this button you will open the Batch overview dialog, which allows you to get an impression of the images inserted into the filmholder. Using the mouse, you can select the images you would like to be scanned.



Open overview dialog

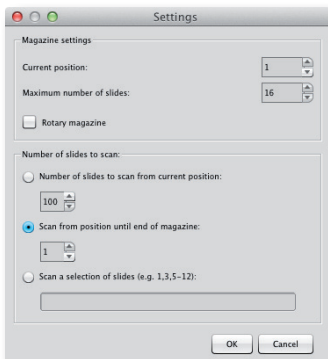


The overview dialog features several buttons at the bottom section:

- **Settings:** You should enter the “Settings” first, if you are going to scan a whole slide magazine with your scanner.

In the „Magazine settings“ you can give details about the magazine you are actually using.

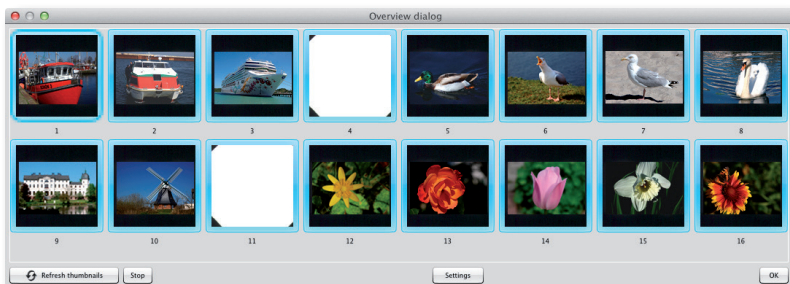
- **Current Position:** The position of the actual image is shown here. You can adjust the position manually.
- **Maximum number of slides:** Enter the absolute size of the magazine you are using (or the number of slides inserted).
- **Rotary magazine:** Check this box, if you are using a rotating magazine without fixed beginning or end.



Under „Number of slides to scan“ you can choose number and position of slides you would like to scan. Select one of the following three options:

- **Number of slides to scan from current position:** Enter the number of slides you would like to scan from actual magazine position.
- **Scan from following position to end of magazine:** Scans all slides from entered position.
- **Scan a selection of slides:** Scans all entered positions; individual positions can be separated with commas, continuous ranges can be entered using hyphens. Example: 1,3,5-12 scans slides 1, 3 and 5 to 12.

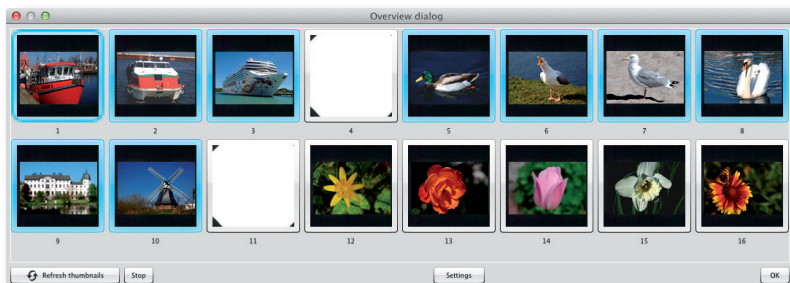
- **Refresh thumbnails:** By clicking this button you start quick preview scans of all images inserted into the filmholder.
- **Stop:** Click on the „Stop“ button to cancel thumbnail actualization.



The preview thumbnails will gradually appear in the overview dialog. You can use this preview to select which images should be scanned. Therefore, please use the “Settings” dialog as described above or just use the mouse to click on the appropriate thumbnails. Images with a blue frame will be considered for the Batch scan, images with white frames will be skipped.



*Use the mouse to select those images you want to scan. Blue framed images will be scanned, while images with white frames will be omitted.*



*Example: The Magazine, whose overview dialog is shown in the above picture, is taking up to 16 slides. No slides are inserted at position 4 and 11. Thumbnails have been refreshed and the slides on position 4, 11 and 12 to 16 have been unselected with the mouse afterwards. The Batch scan will therefore include the slides at position 1 to 3 and 5 to 10.*

- **OK:** The overview dialog will be closed by clicking the “OK” button. Your settings will be applied and the Batch scan is ready to start.



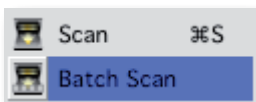
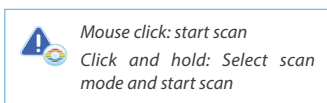
*By clicking „OK“ a preview scan of the active thumbnail will be automatically started for some scanners.*

## Starting the Batch Scan

After setting the parameters for the scan frame as usual, you can start the Batch scan. These settings of the active scan frame will be applied to every single scan of the Batch scan job, unless you have previously activated the Auto Image Optimization option in the SilverFast „Settings“.

- **Selecting Scan Mode:** Select scan mode “Batch Scan” by pressing and holding the “Scan” button at the top right of the horizontal toolbar with your mouse. A drop-down menu will open quickly. Select the entry “Batch Scan” and the Batch scanjob will be performed after releasing the mouse button.

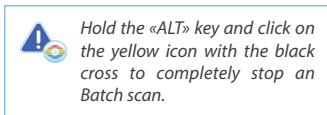
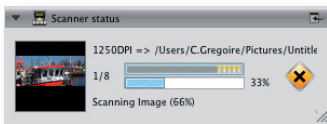
Following the same procedure you can also switch back to normal scan mode.



## Canceling an Batch Scan

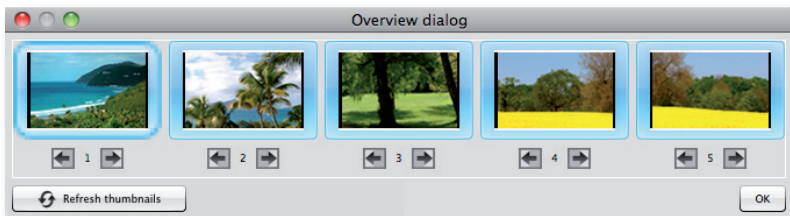
During the Batch scan is running, you can monitor the progress in the scanner status window under the control dock on the left.

- **Cancel the scan of the actual image:** Click the yellow icon with the black cross in the scanner status window to cancel the scan of the current image. The Batch scan will continue with the next image.
- **Cancel the complete Batch scan:** To end the entire Batch scan, please hold down the “Alt” key and click the yellow icon with the black cross in the scanner status window.



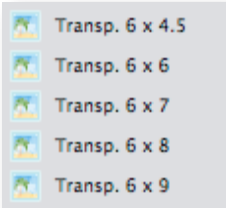
## The Filmstrip Offset Tool

For scanners, which are capable of scanning filmstrips, SilverFast 8 provides the possibility to adjust individual offsets for each image on a filmstrip for compensating minor positioning inaccuracies. Two small arrow buttons are located underneath each thumbnail in the overview dialog for moving the images to the left and right respectively.



## Variable Filmholders

For filmholders, that are suitable for different formats, the required format can be selected at the top left of the control dock.



## List of Scanners that offer Batch Functionality

Following scanners offer an automatic document feeder functionality, which can be used with SilverFast Ai Studio 8:

- Braun Phototechnik Multimag SlideScan 4000 / 4000b
- Braun Phototechnik Multimag SlideScan 6000

- Nikon LS 4000ED / Super Coolscan 4000ED \*
- Nikon LS 40ED / Coolscan IV ED \*
- Nikon LS 5000ED / Super Coolscan 5000ED \*
- Nikon LS 50ED / Coolscan V ED \*
- Nikon LS 8000ED / Super Coolscan 8000
- Nikon LS 9000ED



\* Special filmholders supporting Batch scanning are available as accessories for these Nikon scanners.

- Pacific Image Electronics PowerSlide 3650
- Pacific Image Electronics PowerSlide 5000

- Plustek OpticFilm 120

- reflecta DigitDia 4000 / 5000 / 6000 / 7000
- reflecta RPS 7200
- reflecta RPS 10M

