

# *SilverFast*<sup>®</sup>

*SilverFastAi*

English



*SilverFast* the Digital Power Tool

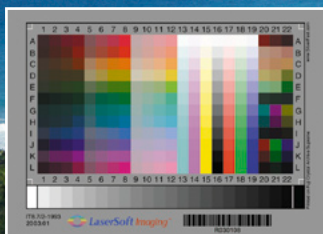
fully automatic



high-quality targets



barcode technology



## Get precise Colors with LaserSoft Imaging IT8 Targets

*„It can be stated that all IT8 targets from LaserSoft Imaging have excellent quality. They are perfectly suited for scanner calibration and fulfill highest quality requirements.“*

*Dietmar Wueller, Image Engineering*



without IT8 Calibration



with IT8 Calibration



Mit dem patentierten Barcode auf den IT8-Targets von *LaserSoft Imaging* funktioniert jede IT8-Kalibrierung vollautomatisch und fehlerfrei. Durch kleine Losgrößen in der Produktion sind diese Targets zudem präziser als viele Targets anderer Hersteller.



The patented barcode technology on the IT8 Targets from *LaserSoft Imaging* allow every IT8 calibration to be performed automatically and free of hassle.



Les cartes pour la calibration IT8 de *LaserSoft Imaging* utilisent une technologie breveté de code bar qui permet réaliser la calibration du scanner automatiquement et sans erreur.



Con el código de barras sobre los targets IT8 de *LaserSoft Imaging*, cada calibración IT8 funciona completamente automática y sin faltas. Por medio de pequeños lotes en la producción, estos targets son mucho más precisos que otros targets de otros fabricantes.



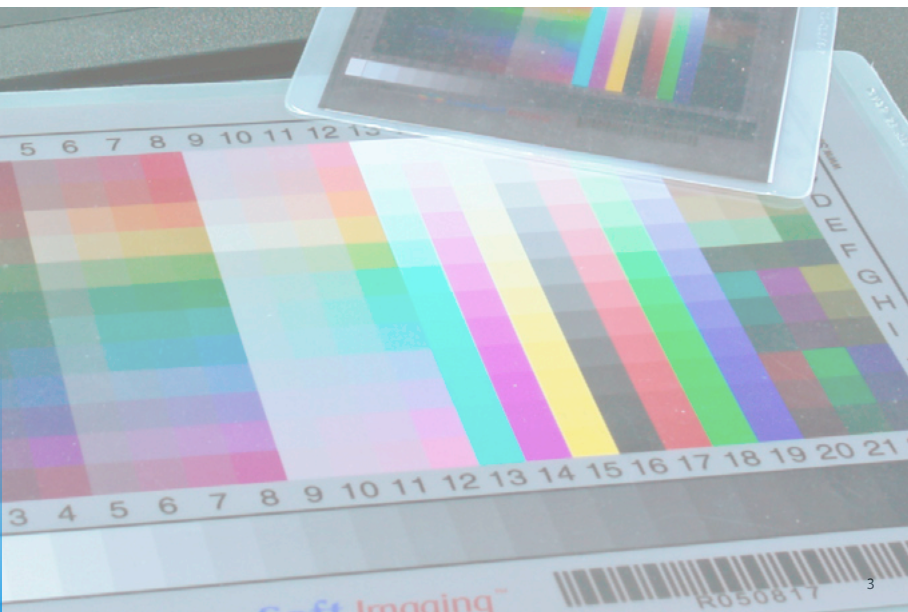
Con il codice a barre brevettato nei target IT-8 della *LaserSoft Imaging*, ogni calibrazione IT-8 funziona in modo completamente automatico e senza errori. Trattandosi inoltre di prodotti in piccole serie, questi target sono più accurati di quelli di molti altri produttori.



Com o código de barras patenteado nos targets IT8 da *LaserSoft Imaging*, a calibração transcorre automaticamente e sem erros. Devido à produção em séries pequenas, estes targets são mais precisos do que muitos de outros fabricantes.

## Content

SilverFast® Software-Licence Agreement	4
<b>Installation of SilverFast</b>	<b>5</b>
Start SilverFast	5
Serialization and Registration	6
<b>SilverFast Ai IT8 Workflow in six Steps</b>	<b>6</b>
1. Prescan	6
2. Image types and Auto-Optimization	7
3. Correcting Brightness	7
4. Setting the Image Dimensions of the Scan	7
5. Sharpening the scan (USM)	8
6. Start Scan / Start Batch Scan	8
<b>Colour management</b>	<b>9</b>
Patented, fully automatic IT8 Calibration of the scanner with SilverFast (optional)	9
<b>Additional Functions</b>	<b>10</b>
Flexible Zoom (only available with SilverFast Ai Studio ME)	10
Automatic Frame Detection and Frame Rotation*	10
Global Colour Correction (GCC)	11
Selective Colour Correction (SCC)	11
Selective Colour to Grey Conversion (SC2G)	12
Dust and Scratch Removal (SRD, ISRD*, ICE**)	12
Multi-Exposure (ME, depending on scanner and only available with SilverFastSEPlusME or AiStudioME)	13
Multi-Sampling (MS, only available with SilverFastSEPlus or higher)	13
AACO (only available with SilverFastSEPlus or AiStudio)	13
NegaFix	13
Histogram	14
Multiple Neutralising Pipette (MidPip4)	14
Reset / General Reset	14
Removing the Screen from Printed Artwork	15
<b>Options / Defaults</b>	<b>15</b>
Options*	15
General defaults*	15
Auto defaults*	16
CMS (Colour management) defaults*	16



# SilverFast® Software-Licence Agreement

Do not open the software package or use this software until you have read and agreed to the terms and conditions of this software-licence Agreement! If you do not accept these terms and conditions, please leave the software in its packaging untouched and send it back to LaserSoft Imaging immediately!

SilverFast (trademark) is a software package comprising software and user manual for a method of generating scans for the subsequent production of colour separations and printing images. LaserSoft Imaging ("LS Imaging") has developed the software and owns all rights of it:

## 1. Copyright

- (1) The user and licensee acknowledges that the copyright of the software in both source and object code form is owned by LS Imaging.
- (2) Manual and other documentation are protected by copyright. Illegal usage, also of the images of the manual, will cause claim for damages.

## 2. Licence

- (1) LS Imaging grants the licensee an exclusive and non-transferable licence to use the software object code and user manual for his or her own use.
- (2) This licence authorizes the use of SilverFast on a single personal computer at one time. Separate licenses are required for use on multiple processors and/or multiple sites.
- (3) The user and licensee is not allowed to copy in whole or in part SilverFast except for the purpose of making a backup copy. The licensee is neither allowed to copy in whole or in part supporting documentation supplied with SilverFast.
- (4) The software contains confidential information; this licence does not allow the licensee to change, adjust, to decompile, to disassemble or in any other way trying to find out the source code.
- (5) The licensee is not allowed to rent, lease, sublicense or loan the software. Transfer of software and documentation is possible under the condition that all software and documentation is transferred, no copy (for backup purposes) is retained and the third party accepts this Licence Agreement.

## 3. Validity

- (1) This licence will be valid from the day the software package is opened. It will be valid until the day LS Imaging or the licensee terminates this agreement.
- (2) This licence agreement may be terminated to the terms and conditions as follows:
  - (a) LS Imaging may terminate this licence upon written notice if the licensee is in breach of the agreement in whole or parts of it.
  - (b) The licensee may terminate this licence upon written notice to LS Imaging under the terms and conditions of No. 4, if he sends back the opened software package, deletes the copy on his computer and any backup copy immediately.

## 4. Warranty

- (1) SilverFast is provided „as is“. LS Imaging does not warrant – neither expressed nor implied – the usefulness of the software SilverFast for a particular purpose or its merchantability or the fitness for licensee's requirements. Although every effort has been made to eliminate errors, LaserSoft Imaging AG does not warrant that SilverFast is free of errors.
- (2) The licensee has to examine the software for considerable, recognizable defects within 14 days. These defects must be notified to LS Imaging in writing. Hidden defects are to be notified upon recognition in writing. Otherwise software and documentation are approved without reserve.
- (3) At considerable defects LS Imaging has the choice of either providing the licensee with another version or to eliminate the defect within reasonable time. If LS Imaging is not able to allow use of the software within this time, the licensee may reduce compensation or terminate this contract.
- (4) Upon assertion of warranty the licensee is obliged to send back software and receipt at the costs of LS Imaging.

## 5. Limitation of Liability

In no event shall LS Imaging, a distributor or authorized dealer be liable for any direct, indirect or consequential damages including economic loss even if LS Imaging, the distributor or authorized dealer has been advised of the possibility of such damage. The licensee agrees that any liability of LS Imaging arising out of the usage of SilverFast whether in contract or in tort shall not exceed the amount paid by the licensee for the software involved.

## 6. Trademarks

SilverFast and the trademarks mentioned in the documentation are (registered) trademarks of LS Imaging or their respective owners. The usage of these trademarks, logos, documentation, screenshots can only be allowed by LS Imaging or the respective owners. Illegal usage will cause claim for damages.

## 7. Ineffective Provisions

Should individual provisions of this contract, for any reason, found to be or become ineffective, or should a fulfillment discrepancy arise, then notwithstanding this agreement shall remain in full force. A provision that is closest in the scope of the legal possibilities of what the parties intended - or if they had considered the provision would have wanted - shall replace the ineffective provision or the fulfillment discrepancy, if necessary retrospectively.

## 8. Amendments

Amendments of this Agreement have to be in writing.

## 9. Applicable Law

Applicable law is the German law; the United Convention of the International Sales of Goods (CISG) is hereby expressly excluded.

1996-2009 Copyright LaserSoft Imaging AG Germany • Luisenweg 6-8 • D 24105 Kiel

## Installation of SilverFast

Insert the *SilverFast* installation CD-ROM into the drive. Start the CD if it does not run automatically. Double-click on the installation program “SilverFast InstallPilot.app”.



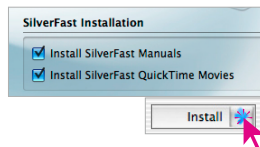
- Select your language.  
Go on with “Next”..



- Click „Install SilverFast“



- Decide whether the *SilverFast* manuals and the *SilverFast* QuickTime movies should also be installed.  
Click on “Install”.



- The installation parameters are now set and the actual installation process can begin. Follow the installation instructions of the operating system. Make sure that you have all installation rights (root or administrator) for your computer.  
End the installation process under “Quit”.

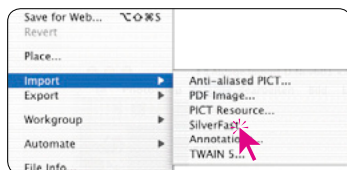


## Start SilverFast

**Start from SFLauncher:** Start *SFLauncher* by double-clicking the application. Choose the installed *SilverFast* version with a mouse-click on the appropriate palette.  
*SilverFast* will start as usual.



**Start from Photoshop:** Start Photoshop and select your *SilverFast* version under “Import” in the “File” menu (Windows: “File” menu).

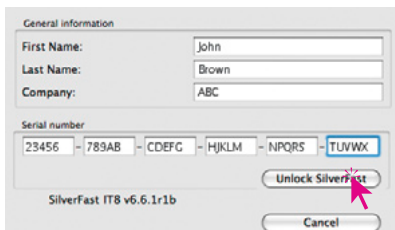


## Serialization and Registration

The main dialogue comes up with the serialization dialogue, where you input your first name, last name, company and the serial number.

This code consists of numbers between 2 and 9 (no ones and no zeros) and all letters between A and Z – except the letters “i” and “o”.

Click “Unlock SilverFast” once you have entered all data.



General information

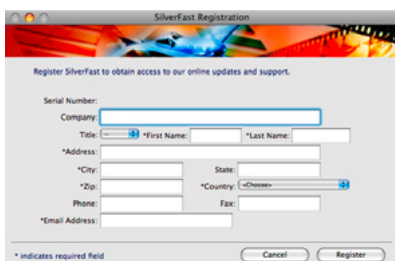
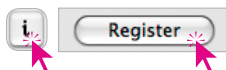
First Name: John  
Last Name: Brown  
Company: ABC

Serial number  
23456 - 789AB - CDEFG - HIJKLM - NPQRS - TUVWX

Unlock SilverFast  
Cancel

Please register your version of *SilverFast*; only then will you receive support and have access to the latest versions using the Online-Update.

Clicking the „i” button, and then hitting the „Register” button will then launch the registration procedure.



SilverFast Registration

Register SilverFast to obtain access to our online updates and support.

Serial Number:  
Company:

Title: \*First Name: \*Last Name:  
\*Address:  
\*City: State:  
\*Zip: \*Country: \*Cheese:  
Phone: Fax:  
\*Email Address:

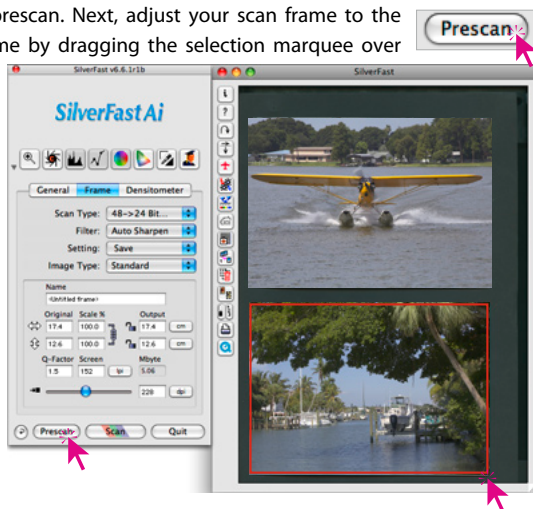
\* Indicates required field

Cancel Register

## SilverFast Ai IT8 Workflow in six Steps

### 1. Prescan

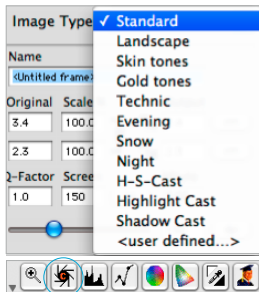
Click “Prescan” to launch a prescan. Next, adjust your scan frame to the desired size. Adjust your frame by dragging the selection marquee over the image accordingly. Make sure the marquee frame is inside the actual image area itself.



## 2. Image types and Auto-Optimization

Under "Image Type", make the appropriate selection to configure the *Auto-Adjust*, so the automatic image control knows how to optimise the image. Immediately after the selection of an image type, the auto-adjust is applied automatically (notice how your image is optimised).

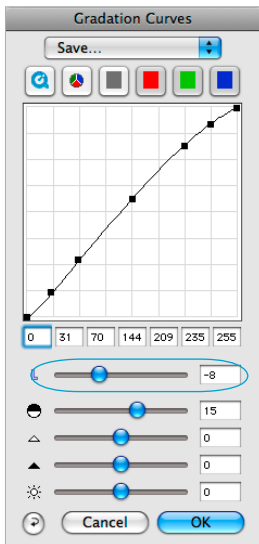
If you do not change "Image Type" selection you can press the auto-adjust icon in the tool bar to optimise the image. You'll soon notice how high lights, shadows and midtones are automatically corrected.



## 3. Correcting Brightness

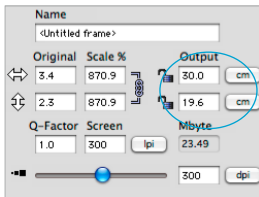
If the image looks too bright or too dark you can open the "Gradation Curves" from the tool bar. Use the midtone slider to correct the overall brightness of your image.

Any correction that you perform can easily be undone by typing "Command-Z" and redone by typing "Command-Z" again ("Ctrl-Z" on a Windows PC, respectively). In fact, you can toggle between the two.

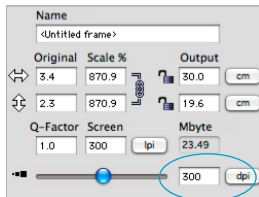


## 4. Setting the Image Dimensions of the Scan

Enter the desired output settings like output size and output resolution. An output resolution between 200 and 300ppi is recommended for Ink jet and laser printers.



Setting the output size.

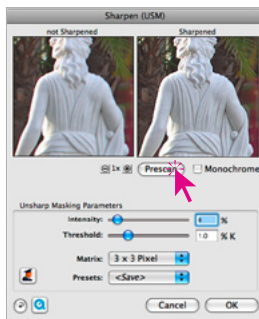
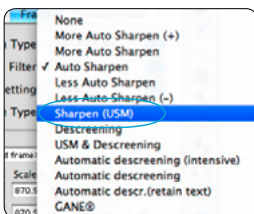


Setting the output resolution.

## 5. Sharpening the scan (USM)

Select "Sharpen (USM)" in the "Filter" menu. Since sharpening depends on resolution and scaling factor, be sure to set these parameters BEFORE sharpening. In order to see the effect of the USM on the scan, select "Prescan" in the

USM dialogue. *SilverFast* then scans the selected part of the image and displays the effects the current settings will have on the final scan. By clicking and holding the mouse into the window, the before/after effect is shown.

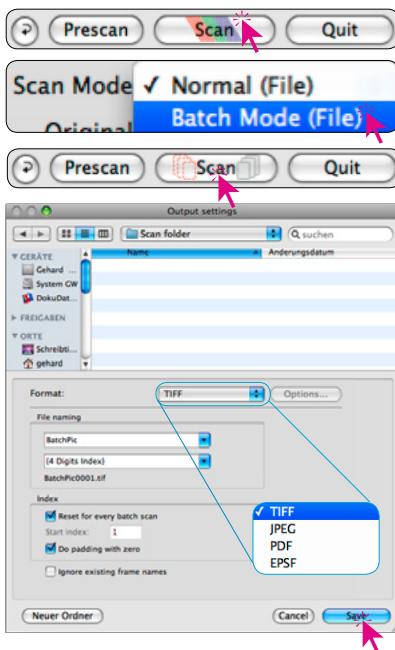


## 6. Start Scan / Start Batch Scan

In order to start scan click on "Scan" button and the scan into the image application or to disk will start.

In order to time-efficiently scan several images in one single pass a batch scan mode is integrated in *SilverFast*. When all images are optimized for scanning according to step 1 to 5, the batch scan mode can be activated. This can be done in the "General" tab under "scanmode".

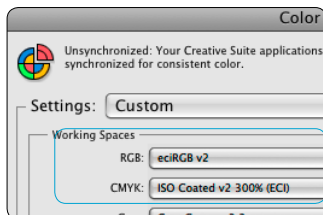
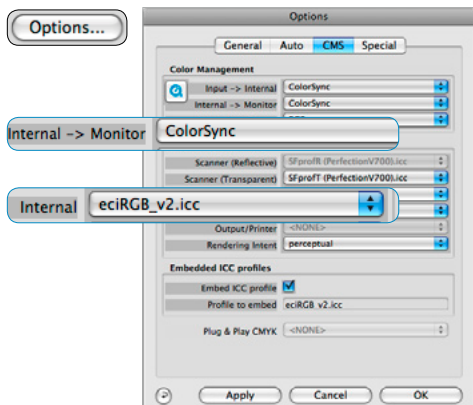
A click on the updated scan button brings up the storage dialogue where the folder and format to save in are chosen. A click on "Save" will start the batch scan.





## Colour management

Ideally, the viewed colour of the screen image should be the identical for *SilverFast* and Photoshop. However, that can only happen when an identical working colour palette is used in both programs. If a self defined working colour palette is used, it should first be copied into the system folder containing ColorSync profiles (Windows: ICM profiles).



### Photoshop

The set up of a working colour palette is done in „file / colour set up / RGB“. Here, for example, „eciRGB v2“. A self defined working colour palette can be saved in the dialogue.

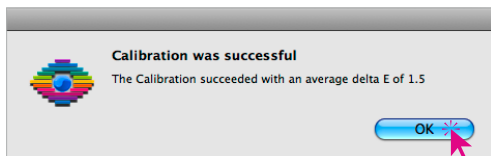
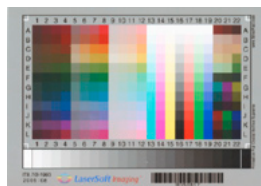
### SilverFast Ai

The set up for a working colour palette is done in „Options... / CMS (Win: ICM)“ at colour management / Internal>Monitor“ and „Profiles for ColorSync / Internal“.

## Patented, fully automatic IT8 Calibration of the scanner with *SilverFast* (optional)

The “Auto-IT8” calibration works as follows:

- The IT8 target with the imprinted bar code on placed on the scanner.
- Click the IT8 icon. *SilverFast* will then calibrate the scanner and display a confirmation message.
- Click the “OK” icon and the generated ICC profile is saved. *SilverFast* will now perform a new prescan in which the new profile will be applied.

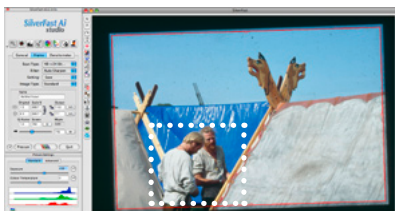


Detailed information can be found on our homepage [www.SilverFast.com](http://www.SilverFast.com), in our manual and in the addendums.

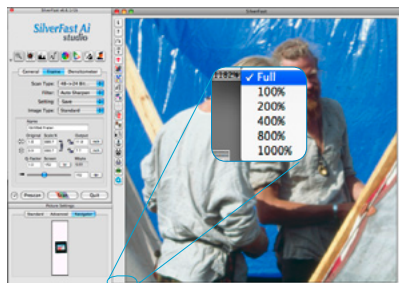
## Additional Functions

### Flexible Zoom (only available with *SilverFast Ai Studio ME*)

Holding down the “Ctrl”-key turns the mouse button into a plus-magnifier. To perform a zoom, simply keep the key pressed and drag a scan frame within the prescan window. The contents of this frame will immediately be magnified once the mouse button is released.



Alternatively, a preset zoom ratio can be selected in the pull down menu in the lower left of the prescan window.



### Automatic Frame Detection and Frame Rotation\*

This function places automatic scan frames on the preview. Note that it is necessary that these images have a certain distance between them and the scanner edges. A strong contrast background is very helpful for reflective images. Transparencies should be placed into the respective holders whenever possible. Inactive frames will be displayed in white colour; the active frame in red.



#### All frames

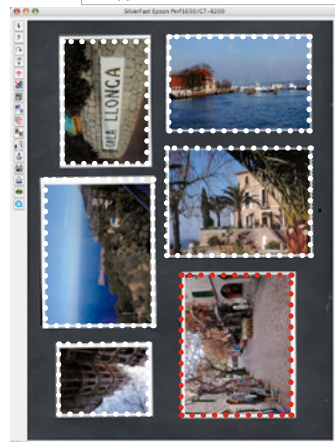
Slide 35 mm  
Filmstrip 35 mm  
Slide 6 x 4,5 cm  
Slide 6 x 6 cm  
Slide 6 x 7 cm

Slide 35mm holder  
Filmstrip 35 mm holder  
Slide 4 x 5 cm holder

Copy frame resolution to all frames

\*The *SilverFast SE Plus* and *Ai Studio Upgrades* additionally include the auto-rotation feature which aligns all frames automatically.

The mouse can be used to adjust the frame size by moving it over the frames corners or sides and the frame itself can be rotated by click dragging the as well as to align the frame manually.



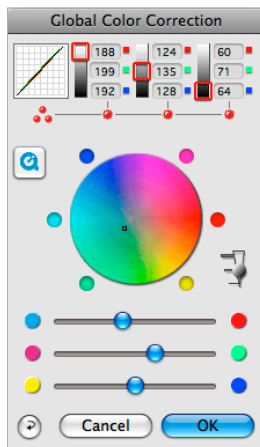
## Global Colour Correction (GCC)

In this dialogue, you can change the entire colour rendering of the scanned artwork.



By clicking or click dragging within the colour sphere, the colour characteristic of the scanned artwork will be moved into the selected area.

The degree of changes can be adjusted by means of the three-step slider. The lower level will produce small changes. The upper level will produce large changes



## Selective Colour Correction (SCC)

Open the selective colour correction from the tool bar



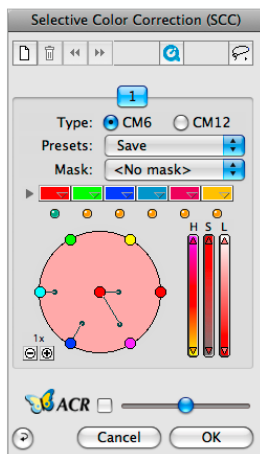
and click into your image on the coloured object you wish to correct. *SilverFast* recognises the colour. Both the center colour and the HSL sliders will change respectively. By clicking into the top or the bottom of the HSB-controls and holding the mouse button down, you can change the hue, saturation or luminance of the colour selected. HSB-correction allows easy colour control.

You can get more sophisticated control by typing numbers into the cells of the colour matrix or by selecting presets from the pop-up menus in the top colour patches of the matrix.

Corrections can be done directly in the colour circle. Either six (CM6) or twelve (CM12) corrections can be performed simultaneously. Complex corrections which shall be applied

to only part of the image can easily be done by using up to four layers and quick masks.

The "ACR" slider regulates the saturation of the colour. Note that the ACR checkbox needs to be activated.



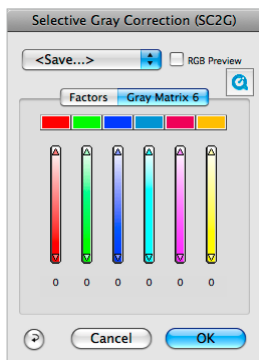
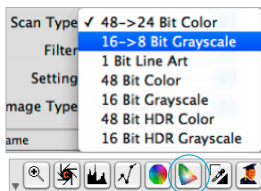
## Selective Colour to Grey Conversion (SC2G)

SC2G serves to selectively converting primary- and secondary colours into shades of grey.

Under "Scan type" you switch from colour to grayscale mode.

Clicking onto the button "Selective Colour Correction" opens the SC2G dialogue.

Clicking onto a shade you want to change will select the appropriate colour in the SC2G dialogue. Colour triangles above the colour to gray controls indicate the colour effected more visibly. Press the small top or bottom triangles on the controls. The top triangle will increase the brightness, the bottom triangle will decrease the brightness of a shade.

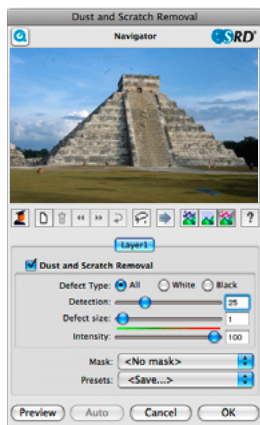
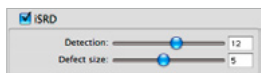


## Dust and Scratch Removal (SRD, iSRD\*, ICE\*\*)

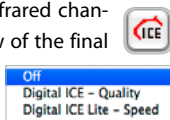
The "SRD" function for removal of dust and scratches is available for all scanners. Some scanners have an Infrared channel as well. These machines then have the additional "iSRD" and "ICE" function in the menu.

**SRD (Smart removal of defects)** is a scratch removal without the use of infrared information, but still offers many helpful settings which work with layers and quick masks. Even B/W negatives are restorable which does not work with infrared due to technical impossibilities.

**iSRD (\*infrared smart removal of defects)** operates on its own layer with real time preview. The effect of the infrared channel can be adjusted individually. *iSRD* works fine with Kodachrome.



**ICE (\*\*Image correction and enhancement)** – uses Infrared channel) works fully automatic without any form of preview of the final result. Depending on scanner model up to 2 intensities may be selected.



### Multi-Exposure (ME, depending on scanner and only available with SilverFast SE Plus ME or AiStudio ME)

Multi-Exposure scans transparencies with variable exposure times. This increases the dynamic range of the scanner while minimizing noise (random pixels generated by imperfect CCD elements) . As a result much more fine details become visible especially in the darker areas of the image.



### Multi-Sampling (MS, only available with SilverFast SE Plus or higher)

Multiple sampling can be applied for some scanners that show a visible, strong noise in the shadow areas, in order to eliminate the artefacts.

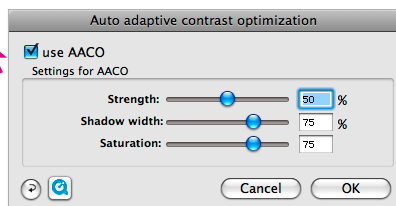
Multi-Sampling can be activated with its own button. The number of scans per scan frame can be 1, 4, 8 or 16. A small number in the button will show the number of sample scans.



### AACO (only available with SilverFast SE Plus or AiStudio)

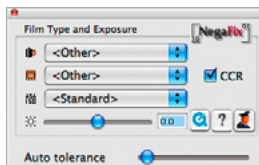
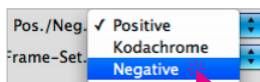
SilverFast AACO is an excellent tool for the correction of dark, too much contrast bearing image parts while preserving the details in the highlights.

AACO is freely adjustable and is activated by clicking the icon left of the preview window.



### NegaFix

NegaFix is a conversion tool for negative films – currently, over 120 different film profiles of the largest manufacturers are selectable.

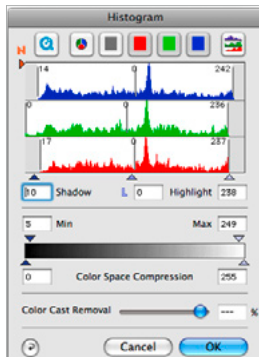


## Histogram

In the histogram you can change the highlights (white point), the midtones and the shadows (black point) by dragging with the mouse on the small movable triangles.

The respective values can be monitored with the input fields below and also with the input fields above and below the gray scale bar. You can switch the midtone characteristic by toggling to "L" or "N" (L = logarithmic and N = linear).

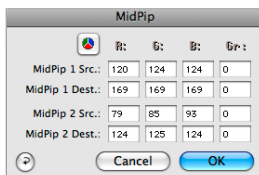
Professional users can use the input fields and movable triangles "Min" and "Max" to adjust highlight- and shadow values. The "Colour Space Compression" can also be freely adjusted with the small movable triangles. Colour casts which may possibly be there in the image can be reduced with the slider at the bottom of the dialogue.



## Multiple Neutralising Pipette (MidPip4)

MidPip4 (Advanced Colour Cast Removal) allows removal of colour casts conveniently, which result from a mixed light situation. If you want to set several neutral points at once, click onto the pipette and hold the "Option"-key while setting up to four neutral points. The pipette will remain as a cursor until you either click the pipette again or you have set the fourth neutral point!. In

order to fine tune a neutral point, double-click onto the pipette tool and the MidPip dialogue window will appear. The value fields show the "Before-After" RGB- or CMY-values of all neutral points. They are fully editable. Even very subtle corrections can be performed.



## Reset / General Reset

In order to reset the correction within the active scan frame, click the "Reset"-button in the *SilverFast* dialogue window.

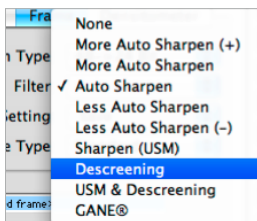
In order to reset all *SilverFast* correction settings, press the "Shift" key and click on the "Reset-All"-button in the *SilverFast* dialogue window.



## Removing the Screen from Printed Artwork

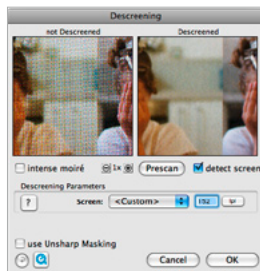
To scan artwork done with offset printing, as for example from a magazine, the scans have to be "descreened." First, select the function "Descreening" in "Filter."

In order to generate a preview, simply click the



"Preview" button within the opened dialogue. The mouse pointer changes to a square, with which a homogenous part

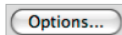
with medium brightness of the image should be chosen and clicked. A scan starts immediately. The previously activated input field "detect screen" ensures that the correct screen is calculated automatically. The result of the descreening is displayed after the end of the final scan in the "Descreened" window. Simultaneously, the detected screen is displayed in numerical values in the "Descreening Parameters" window.



## Options / Defaults

### Options\*

Before you start working with *SilverFast*, please set important preferences under the "Options..." dialogue. These preferences will be automatically incorporated into any future scans performed.

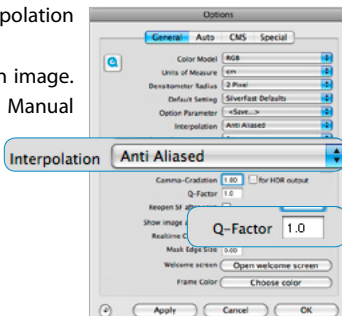


*\* Attention ! The "default dialogue" windows differs from scanner to scanner and some features are only available for certain scanners or certain imaging software. The following parameters are set:*

The brief instructions below outline the most important pre-settings. A complete explanation of all functions can be found in the general *SilverFast* manual and in the additional PDFs.

### General defaults\*

- Interpolation: Switching between standard interpolation and the higher-order antialiasing interpolation.
- Q-factor: The Q-factor is the quality factor for an image. The range is from 1 to 2.5. Please refer to the Manual about the calculation of the optimum scanning resolution. The default is 1,5.



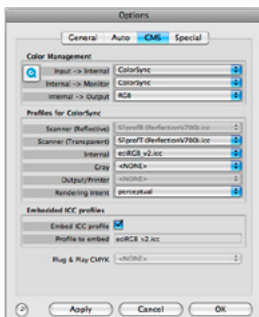
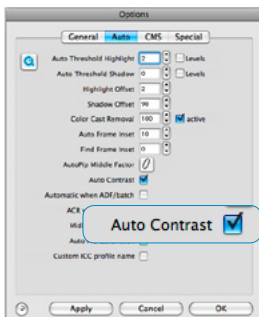
## Auto defaults\*

- Auto Contrast: The best contrast setting of the picture viewed is automatically chosen upon activation.

## CMS (Colour management) defaults\*

### Colour Management

- CMS Input > Internal: Here the preferred model for correcting the colour deviations of the current scanner can be selected. The choice is between “none” and “ColorSync” calibration.
- CMS Internal > Monitor: Here the matching from the internal colour space of *SilverFast* to the current monitor is being defined. “None” is if the user does not want any matching. “Automatic” is for Photoshop. (Please check the internal ICC profile set in *SilverFast* should be the same as the one allocated in Photoshop’s internal colour space).
- CMS Internal > Output: The preferred system for defining the output colour space generation can be chosen here. Select “RGB” for no output matching. “ColorSync / ICM” if you want ColorSync / ICM to do the output matching. “Cie-LAB” if you want to generate device independent colour space. “P&P CMYK” for *SilverFast*’s own powerful separation to CMYK with Photoshop matching.



### Profiles for ColorSync / ICM

- Scanner (Reflective)\*: ICC profile for the reflective unit of the scanner.
- Scanner (Transparency)\*: ICC profile for the transparency unit of the scanner.
- Internal: ICC profile for the internal colour space.
- Output / Printer: ICC profile for the printer.

### Embedded ICC Profiles

This option enables the user to pass the image data to an application which would do automatic matching with the embedded profile. When a TIFF-file is generated from *SilverFast* the ICC-profile is embedded into the TIFF data.

Please use the link below to see further explanations, examples and help

<http://www.silverfast.com/en/>

- ✓ Quick Time Training videos
- ✓ SF6 manual
- ✓ Official Guide, by Taz Tally
- ✓ PDF tutorials and instructions
- ✓ 6.6 Addendum to manual
- ✓ Support forum





# SilverFast® Ai IT8 Studio **ME**



- ✓ Multi-Exposure
- ✓ Auto IT8 Calibration
- ✓ NegaFix

## SilverFast Multi-Exposure

The objective of Multi-Exposure is to enhance the Dynamic Range of scans from film material since a scanner rapidly reaches its limits with single scan acquisition.



LaserSoft Imaging AG  
Luisenweg 6-8  
24105 Kiel • Germany  
Tel.: +49 (0) 431/5 60 09-0  
Fax: +49 (0) 431/5 60 09-96  
E-Mail: info@SilverFast.com  
www.SilverFast.de

LaserSoft Imaging, Inc.  
625 Freeling Drive  
Sarasota, FL 34242, USA  
Phone: (+1) 941-312-0690  
Fax: (+1) 941-312-0608  
E-Mail: sales@SilverFast.net  
www.SilverFast.com

### System requirements\*

Mac OS X, Windows 2000, XP, Vista, Windows 7,  
512 MB RAM, (1 GB RAM recommended),  
500 MB free hard disk space, CD-/ DVD-drive

\* Please check the compatibility of the software  
and features, your device and operating system  
at <http://www.silverfast.com/product/en.html> or  
ask your dealer.

SilverFast® and LaserSoft Imaging™ are registered  
trademarks of LaserSoft Imaging AG, Germany.  
All mentioned trademarks are the protected  
trademarks of the respective owners.

### Systemanforderungen\*

Mac OS X, Windows 2000, XP, Vista, Windows 7,  
512 MB RAM, (1 GB RAM empfohlen),  
500 MB freier Festplattenspeicher,  
CD-/ DVD-Laufwerk

\* Bitte überprüfen Sie die Lauffähigkeit der Soft-  
ware und Features für Ihr Gerät und Betriebsys-  
stem unter <http://www.silverfast.com/product/de.html>  
oder befragen Sie Ihren Händler.

SilverFast® und LaserSoft Imaging™ sind die ein-  
getragenen Warenzeichen der LaserSoft Imaging  
AG, Deutschland. Alle erwähnten Warenzeichen  
sind die geschützten Warenzeichen der jewei-  
ligen Inhaber.

### Configuration système requise\*

Mac OS X, Windows 2000, XP, Vista, Windows 7,  
512 Mo de RAM, (1 GB RAM recommandé),  
500 Mo d'espace libre sur le disque dur,  
lecteur CD/ DVD.

\* Vérifiez le fonctionnement du logiciel pour vo-  
tre appareil et système d'exploitation sous <http://www.silverfast.com/product/fr.html> ou consultez  
votre revendeur.

SilverFast® et LaserSoft Imaging™ sont des  
marques déposées de LaserSoft Imaging AG, Alle-  
magne. Toutes les marques mentionnées sont les  
marques protégées des propriétaires respectifs.

Patents: EP 1594301, EP 1744278

10-2009



SilverFast the Digital Power Tool