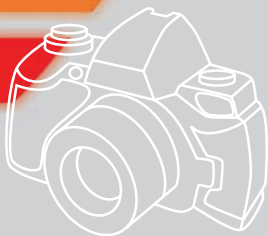
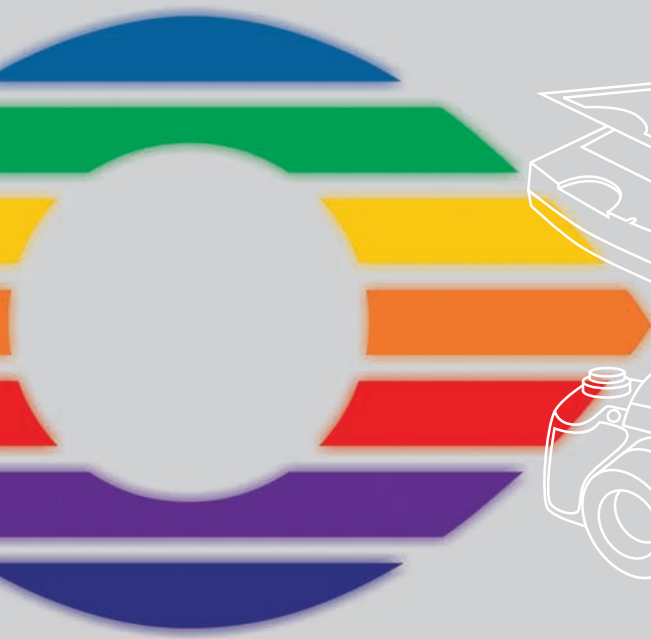


# SilverFast®

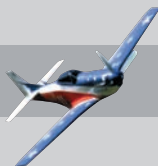
SilverFast **SE**

English • Deutsch • Français  
Español • Italiano • Português

SilverFast **DCSE**



LaserSoft Imaging®



# SilverFast Software-Licence Agreement

Do not open the software package or use this software until you have read and agreed to the terms and conditions of this software-licence Agreement! If you cannot accept these terms and conditions, please, let the the software in its packaging untouched and send it back to LaserSoft Imaging immediately !

SilverFast (trademark) is a software package comprising software and user manual for a method of generating scans for the subsequent production of colour separations and printing images. LaserSoft Imaging ("LS Imaging") has developed the software and owns all rights of it:

## 1. Copyright

- (1) The user and licensee acknowledges that the copyright of the software in both source and object code form is owned by LS Imaging.
- (2) Manual and other documentation are protected by copyright. Illegal usage, also of the images of the manual, will cause claim for damages.

## 2. Licence

- (1) LS Imaging grants the licensee an exclusive and non-transferable licence to use the software object code and user manual for his or her own use.
- (2) This licence authorizes the use of SilverFast on a single personal computer at one time. Separate licenses are required for use on multiple processors and/or multiple sites.
- (3) The user and licensee is not allowed to copy in whole or in part SilverFast except for the purpose of making a backup copy. The licensee is neither allowed to copy in whole or in part supporting documentation supplied with SilverFast.
- (4) The software contains confidential information; this licence does not allow the licensee to change, adjust, to decompile, to disassemble or in any other way trying to find out the source code.
- (5) The licensee is not allowed to rent, lease, sublicense or loan the software. Transfer of software and documentation is possible under the condition that all software and documentation is transferred, no copy (for backup purposes) is retained and the third party accepts this Licence Agreement.

## 3. Validity

- (1) This licence will be valid from the day the software package is opened. It will be valid until the day LS Imaging or the licensee terminates this agreement.
- (2) This licence agreement may be terminated to the terms and conditions as follows:
  - (a) LS Imaging may terminate this licence upon written notice if the licensee is in breach of the agreement in whole or parts of it.
  - (b) The licensee may terminate this licence upon written notice to LS Imaging under the terms and conditions of No. 4, if he sends back the opened software package, deletes the copy on his computer and any backup copy immediately.

## 4. Warranty

- (1) SilverFast is provided "as is". LS Imaging does not warrant – neither expressed nor implied – the usefulness of the software SilverFast for a particular purpose or its merchantability or the fitness for licensee's requirements. Although every effort has been made to eliminate errors, LaserSoft Imaging AG does not warrant that SilverFast is free of errors .
- (2) The licensee has to examine the software on considerable, recognizable defects within 14 days. These defects must be notified to LS Imaging in writing. Hidden defects are to be notified upon recognition in writing. Otherwise software and documentation are approved without reserve.
- (3) At considerable defects LS Imaging has the choice of either providing the licensee with another version or to eliminate the defect within reasonable time. If LS Imaging is not able to allow use of the software within this time, the licensee may reduce compensation or annulate this contract.
- (4) Upon assertion of warranty the licensee is obliged to send back software and receipt at the costs of LS Imaging.

## 5. Limitation of Liability

In no event shall LS Imaging, a distributor or authorized dealer be liable for any direct, indirect or consequential damages including economic loss even if LS Imaging, the distributor or authorized dealer has been advised of the possibility of such damage. The licensee agrees that any liability of LS Imaging arising out of the usage of SilverFast whether in contract or in tort shall not exceed the amount paid by the licensee for the software involved.

## 6. Trademarks

SilverFast and the trademarks mentioned in the documentation are (registered) trademarks of LS Imaging or their respective owners. The usage of these trademarks, logos, documentation, screenshots can only be allowed by LS Imaging or the respective owners. Illegal usage will cause claim for damages.

## 7. Ineffective Provisions

Should individual provisions of this contract, for any reason, found to be or become ineffective, or should a fulfillment discrepancy arise, then notwithstanding this agreement shall remain in full force. A provision that is closest in the scope of the legal possibilities of what the parties intended - or if they had considered the provision would have wanted - shall replace the ineffective provision or the fulfillment discrepancy, if necessary retrospectively.

## 8. Amendments

Amendments of this Agreement have to be in writing.

## 9. Applicable Law

Applicable law is the German law; the United Convention of the International Sales of Goods (CISG) is hereby expressly excluded.

# Content • Inhalt Table des matières • Contenido Indice • Conteúdo

English	4-15
Deutsch	16-27
Français	28-39
Español	40-51
Italiano	52-63
Português	64-75

## Registration

Please register take a minute to this software. It will enable you to download free updates for a limited time, and to contact technical support by e-mail or fax. You can register on-line at [www.silverfast.com](http://www.silverfast.com). Your personal information will be kept confidential.

## Registrierung

Für die Registrierung der Software, die Sie berechtigt, kostenlose Updates vom Internet herunterzuladen, verwenden Sie bitte das Registrierungsformular auf unserer Internetseite [www.silverfast.com](http://www.silverfast.com). Ihre Daten werden vertraulich behandelt.

## Enregistrement

Enregistrez votre logiciel par notre site d'internet [www.silverfast.com](http://www.silverfast.com) et vous avez le droit de télécharger des mises à jour. Ces informations données sont traitées confidentiellement.

## Registro

Para registrar este software, por favor, usa el formulario de registraci3n en nuestra p3gina web [www.silverfast.com](http://www.silverfast.com). La registraci3n le permite bajarse actualizaciones de vuestra versi3n *SilverFast* de nuestra p3gina web.

## Registrazione

Per la registrazione Software che le consente di scaricare gli updates gratuiti da internet usi il formulario di registrazione che trova sul nostro sito [www.silverfast.com](http://www.silverfast.com). I suoi dati vengono trattati riservatamente

## Registro

Para o registro do software que o autoriza a baixar atualiza33es gratuitas pela Internet, utilize-se do formul3rio de registro na nossa p3gina [www.silverfast.com](http://www.silverfast.com). Seus dados ser3o tratados sigilosamente

# Introduction

SilverFast is now in its fifteenth year after its introduction in 1995. By now SilverFast has received so much recognition world-wide that some already call SilverFast "The Standard" for scan software. That is a great compliment but nothing we intend to rest upon!

SilverFast has made professional colour scanning truly manageable and results predictable.

With SilverFast 6 you will also see the advent of the first SilverFast QuickTime movies, exemplifying the powerful functions built into SilverFast 6 demonstrating how easy these tools can be used.



Karl-Heinz Zahorsky  
President LaserSoft Imaging AG

Kiel, January 2010

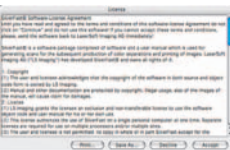
## SilverFast Installation

Insert your SilverFast installation-CD into your CD drive. The CD will open automatically.

- Under "Language" select your language. A dialog with several choices comes up.
- Under "SilverFast Installation ..." you will define, whether you install the SilverFast Photoshop-Plugin (Mac and Win) or the Twain-Module (Win only)  
With "SilverFast Photoshop / Stand alone Plugin" SilverFast will be installed into Adobe Photoshop (if available) and with "SF Launcher", enabling SilverFast to run as Stand-Alone program (Mac and Win).  
With "SilverFast TWAIN" SilverFast will be installed as "TWAIN 32" (Win only).

For safe install please follow the recommended steps from the installer.

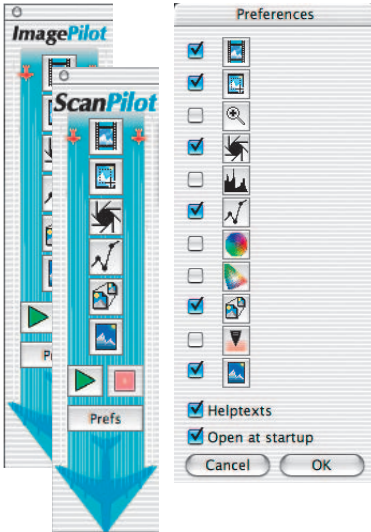
- You will find up-to-date information under "SilverFast ReadMe" which might not have been include at printing time of the booklet.
- "SilverFast Documentation" features the complete SilverFast manual, manuals for optional features, as well as Acrobat Reader software to view the manuals.
- "SilverFast Ai Demos" is a link to our website, allowing you to try download fully funtional demos of our latest SilverFast Ai versions.



## ScanPilot® / ImagePilot

The first time you start *SilverFast*, you will be greeted by the *ScanPilot / ImagePilot*. If you press the start-button, the *ScanPilot / ImagePilot* will guide you through the various tools of *SilverFast* in the recommended order. This way you'll easily get accustomed to our recommended workflow. The steps are: pre-scan, frame selection (cropping), automatic adjustment, graduation correction, size adjustment and scaling. After these steps the scan process is finished.

You can stop the *ScanPilot / ImagePilot* any time by pressing the stop-button. At this point, you can use the *SilverFast* tools manually.



By pressing the "Prefs"-button you can expand the tools-list used by the *ScanPilot / ImagePilot*. Click the check boxes beside the desired tool. The *ScanPilot / ImagePilot* guides you through the professional steps to achieve best quality. You will find a tools description in this Quickstart and in the manual on CD.

Difference between *ScanPilot* and *ImagePilot*: There are no differences! The "ScanPilot" is available in *SilverFastSE*, and the "ImagePilot" in *SilverFastDCSE*.



Starting the *ScanPilot / ImagePilot*



Stopping the *ScanPilot / ImagePilot*

## SilverFast Help

Whenever you move the mouse over an icon in *SilverFast*, you will get a brief explanation at the bottom of the pre-scan window.

You can also use the question mark-icon at the upper left corner of the pre-scan window in order to access the *SilverFast* Help. This will lead you to more in-depth manuals (Acrobat Reader PDFs). By clicking the "Q"-button, the respective QuickTime movie is launched.

Extensive information about all functions of *SilverFast* can be found in the full manual. This manual is available in pdf-format on the *SilverFast-CD*.

The most current information about *SilverFast* can be found on our website:

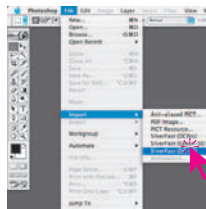
<http://www.silverfast.com/overview/en.html>

Instructional Quicktime movies are also available there.

# Quickstart

## 1. Start *SilverFast SE / SilverFast DCSE*

Start from Photoshop: Start Photoshop and select your scanner "SilverFast..." under "Import" under the "File"-menu (Windows: "File"-Menu).



Start from *SF Launcher*: Start *SFLauncher* by double-clicking the application.

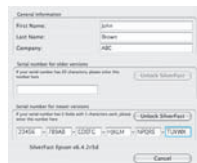
Under "Plugins" select the appropriate *SilverFast* Version (in this example "*SilverFast DCSE*" and click "Start". *SilverFast* will start as usual.



## 2. Serialization and Registration

The main scan dialogue comes up with the Serialization dialogue, where you input your first name, last name, company and the serial number.

This code consists of numbers between 2 and 9 (no ones and no zeros), and all letters between A and Z – except the letters "i" and "o". Click "Unlock SilverFast" once you have entered all data.



Please register your version of SilverFast; only then will you receive support and have access to the latest versions using the Online-Update.

Clicking the "i" button, and then hitting the "Register" button; will then launch the registration procedure.



### 3.1 "Prescan" (*SilverFast SE*)

If you use *SilverFast SE* connected to a scanner, click onto the "Prescan" button to launch the prescan. Adjust your frame by dragging the selection marquee over the image accordingly. Make sure the marquee frame is inside the actual image area itself.



### 3.2 “Open“ (*SilverFastDCSE*)

Only if you use *SilverFastDCSE* for processing previously saved image files (e.g. of a digital camera), the *VLT* (virtual light table) opens after you start *SilverFast*.

Once the *VLT* is shown, you can choose the desired images file directories using the Navigator Panel. In addition to files on your computer, images from a digital camera connected to your computer can also be loaded in the *VLT*. Images can be selected and copied from the Overview work area of the *VLT* to the Album work area using the “Drag and Drop” feature. Additionally, images in the Album can be sorted, the file names can be changed, comments can be added, images can be rotated, etc....



The thumbnails' height can be individually adjusted for the Overview, Album and Magnifying Glass windows. The magnifying glass window always shows the area of the image corresponding to the position of the mouse pointer.

In the Album Panel, you can move and organize images in different Albums. The contents of an album or the overview window can also be printed as info sheet.

Double clicking on an image in the album will transfer you directly to the *SilverFastDCSE* main window. This then permits you to optimize the image using all of *SilverFast's* tools. Once the desired image corrections and enhancements are chosen, you can click on the edit button and the new optimized image file is saved back into the album. The processed image is identified with a green “LED”.

### 4. Zooming an Image into the Prescan Window

In order to zoom a detail into the prescan window, draw a frame around the desired part of the image and click on the magnifying glass.

A quick zoom into the prescan window takes place. In order to get back to the overview prescan, relick the magnifying glass. The magnifying-glass button functions like a “toggle switch”.

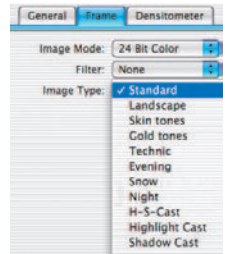


If you want to enlarge the zoomed preview further, minimize the scan frame in the zoomed preview and click the prescan button again.

## 5. Image Type / Auto-Adjust

Under “Image Type”, make the appropriate selection to configure the “Auto-Adjust”, so the automatic image control knows how to optimise the image. Immediately after the selection of an Image Type, the Auto-Adjust is applied automatically (notice how your image is optimised).

If you do not change “Image Type” selection you can press the Auto-Adjust icon in the tool bar to optimise the image. You'll soon notice how highlights, shadows and midtones are automatically corrected.



## 6. Histogram

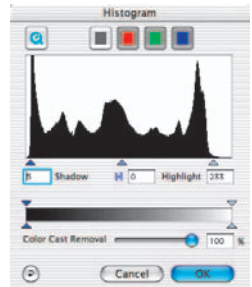
In the histogram you can change the highlights (white point), the midtones and the shadows (black point) by dragging with the mouse on the small movable triangles.

The respective values can be monitored with the input fields below.

You can switch the midtone characteristic by toggling to “L” or “N” (L = logarithmic and N = linear).

The “Colour Space Compression” can also be freely adjusted with the small movable triangles.

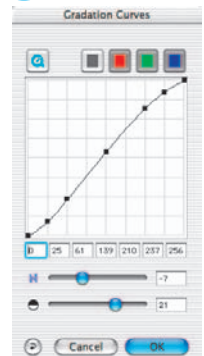
Colour casts which may possibly be there in the image can be reduced with the slider at the bottom of the dialog.



## 7. Correcting Brightness

If the image looks too bright or too dark you can open the “Gradation Dialog” from the tool bar. Use the midtone slider to correct the overall brightness of your image.

Any correction that you perform can easily be undone by typing “Command-Z” and redone by typing “Command-Z” again (“Ctrl-Z” on a Windows PC, respectively). In fact, you can toggle between the two.



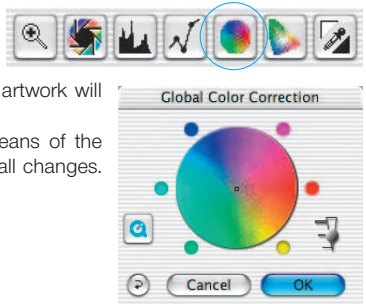


## 8. Global Colour Correction

In this dialog, you can change the entire colour rendering of the scanned artwork.

By clicking or click dragging within the colour sphere, the colour characteristic of the scanned artwork will be moved into the selected area.

The degree of changes can be adjusted by means of the three-step slider. The lower level will produce small changes. The upper level will produce large changes.



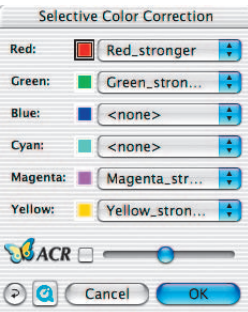
## 9. Selective Colour Correction

Individual colours, independent of others, can be corrected in this dialog.

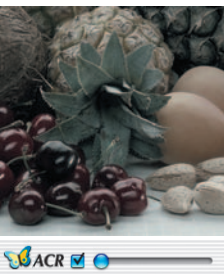
Open the selective colour correction from the tool bar, and click on the colour in your artwork that you wish to change.

*SilverFast* will recognize the appropriate colour and will activate the corresponding colour selection in the dialog window.

The colour activated can be determined by the wide border around the colour patches.



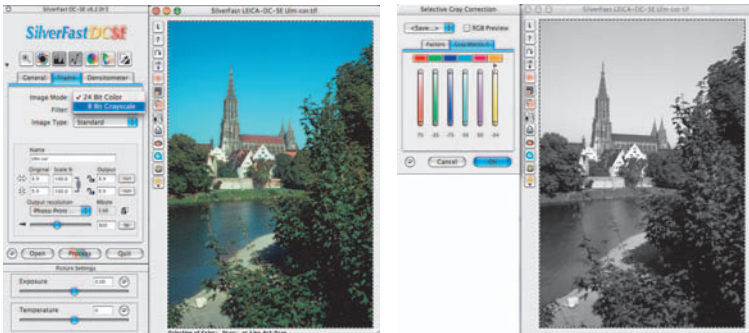
"ACR" (Adaptive Colour Restoration) when checked, is a new powerful function to correct image saturation, if too much or too little automatically. The slider allows you to adjust the saturation automatic.



## 10. Selective Colour to Grey Conversion (SC2G)

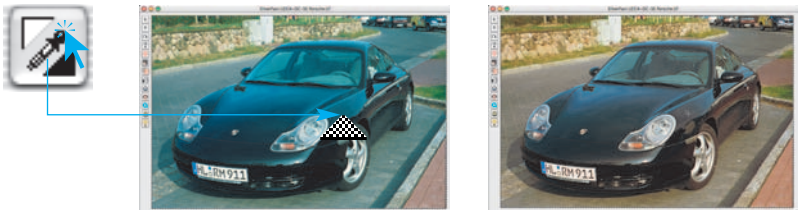
SC2G serves to selectively converting primary- and secondary colours into shades of grey. Under "Image mode" you switch from colour to grey mode. Clicking onto the button "Selective Colour Correction" opens the SC2G dialogue.

Clicking onto a shade you want to change will select the appropriate colour in the SC2G dialogue. Colour triangles above the colour to grey controls indicate the colour effected more visibly. Press the small top or bottom triangles on the controls. The top triangle will increase the brightness, the bottom triangle will decrease the brightness of a shade.

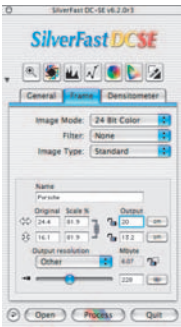


## 11. Neutralising Pipette (MidPip)

MidPip (Advanced Colour Cast Removal) allows removal of colour casts comfortably, which e.g. result from a mixed light situation.

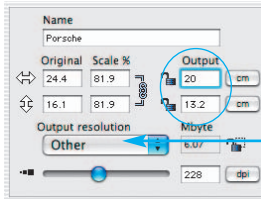


If you want to set a neutral point, click onto the pipette. The pipette will remain as a cursor until you either click the pipette again or you have set the neutral point into the image!

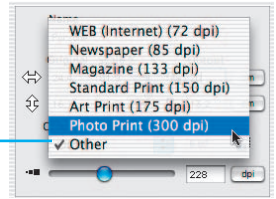


## 12. Image Dimensions

Set your image dimensions, such as output size and printing screen, as desired.



Setting the output size

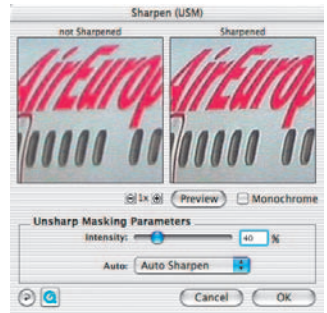
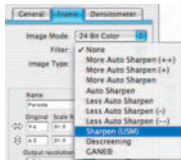


Setting the printing screen

## 13. Defining Unsharp Masking

Under "Filter", select "Unsharp Masking" to define the sharpness of your image. Since sharpness is related to image scaling and resolution, make sure you have set output size and output screen of your scan before setting Unsharp Masking.

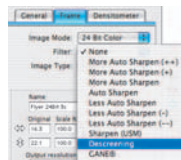
To view the sharpness of the final scan, click on "Prescan" and click into the area of interest in your image. SilverFast commands the scanner to pick up the selected portion from the image to judge the sharpness effect. You can change any of the Unsharp Masking parameters and view the effect on the image immediately.



## 14. Removing the Screen from Printed Artwork

To scan artwork done with offset printing, as for example from a magazine, the scans have to be "descreened." First, select the function "descreen" in "Filter".

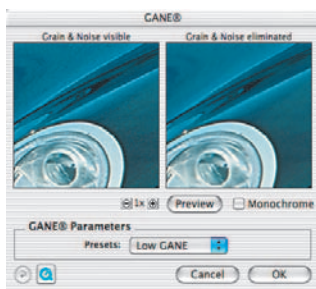
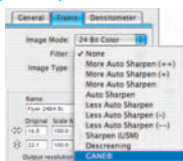
The screen size of the artwork to be screened will appear in the opened window: either manually by number entry, or above the menu with the presets.



## 15. Grain- and Noise Removal (GANE)

The reduction of grain pattern and noise can be monitored in *SilverFast*'s "Before-After-Preview" and enables a secure judgement of the final results.

The intensity of the GANE filter can be easily controlled by the user with a drop-down list of presets.



## 16. Dust and Scratch Removal (SilverFastSRD)

After starting *SilverFast SRD* click "Prescan" to generate a new preview scan with the current resolution set in order to show all artifacts..

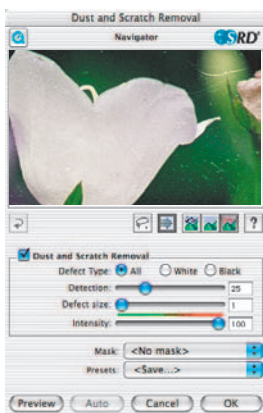
The "Auto"-button tells *SilverFast* to find the best presets possible. The settings found can be optimised further.

At first select "Defect Type" and switch to "artifacts highlighted"-mode. All artifacts found will be highlighted in red colour.

You can now correct the auto settings found with the sliders "Detection" and "Defect Size". You should leave "Intensity" for the time being on "100"!

With the slider "Intensity" reduce the number of details recognized which are not artifacts (Value: < 100).

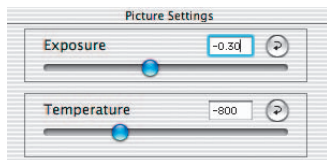
Check the overall results by selecting other image areas with the Navigator and switching the monitor modes. In order to eliminate large artifacts or scratches only in certain areas of the image, use the mask function. Clicking "OK" will apply the parameters set and the dialogue will be closed.



## 17. Picture Settings dialogue (only SilverFastDCSE)

The slider "Exposure" simulates a change in the exposure of the image. In general the adjustment range comprises plus/minus two frames.

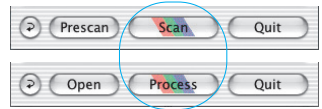
The slider "Temperature" offers a quick and easy correction of the white balance in the image. By using this feature, incorrect camera settings can be compensated.



## 18. Scan / Process

In order to start scan or processing, click on “Scan-” or “Process”-button and the scan into the image application or to disk will start.

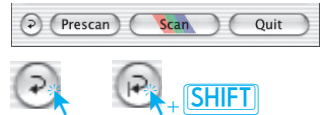
When the “Ctrl” Key (Windows right mouseclick) pressed, a dialogue opens in which the format can be chosen. In *SilverFast DCSE* the path for saving can also be selected.



## 19. Reset / General Reset

In order to reset the correction within the active scan frame, click the “Reset”-button in the *SilverFast* dialogue window.

In order to reset all *SilverFast* correction settings, press the “Shift” key and click on the “Reset-All”-button in the *SilverFast* dialogue window.



## 20. Densitometer

You can set the image output orientation in the densitometer pallet. The image orientation will be shown by a small image of the current scan frame.

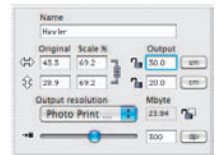
With the toggle button “Pixel-Zoom/Overview” you can switch to pixel zoom, monitoring the small area with regard to the position of the mouse.

The lower half of the pallet serves to monitor the colour values. Left showing “Before”- and right the “After” colour and their corresponding colour values.



## 21.1 Print Image from *SilverFast* Main Menu (*SilverFastSE*, *SilverFastDCSE*)

It is possible to pass on the contents of the active image frame in the preview window directly to a connected printer. The size of the image to be printed can be set in the scaling dialogue in the “Frames” palette.

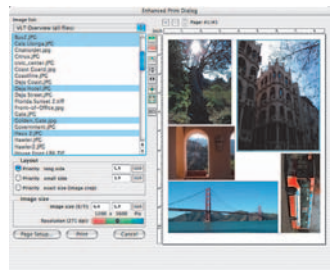


## 21.2 *PrintTao*, the Extended Print Dialogue within *VLT* (only *SilverFastDCSE*)

The print menu in the *VLT* contains not only the possibility to print contact sheets of Albums or printing an overview, but also include the “advanced printing dialogue” in order to print out a selection of images from an Album or from the overview.



Contact sheet of Overview  
Contact sheet of Album  
Enhanced print dialog...



## 22. „General“ Palett (*SilverFastSE* / *SilverFastDCSE*)

In *SilverFastSE* you will see the bus system under “Device”. In *SilverFastDCSE* you can open the previously selected “Image” or you can switch to a different directory.

With “Process Mode” you determine where the image will be put. Set to “Normal” the image will be passed on to the imaging application, e.g. Photoshop with „Normal File” the image will be saved as a file to disk.

Under “Pos./Neg.” you can switch from Positive- to Negative-Mode. Here you can use *SilverFastNegaFix* to optimise any negative film original.



## Options... (Defaults)\*/\*\*

Before you start working with *SilverFast*, please set important preferences under the “Options...” dialogue. These preferences will be automatically incorporated into any future scans performed.

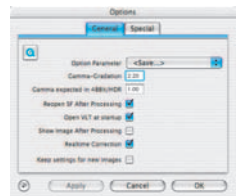
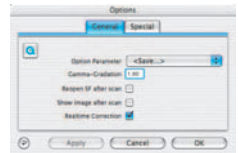


**\*/\*\* Attention:** The “default dialogue” windows differs from scanner to scanner and some features are only available for certain scanners or certain imaging software. The following parameters are set:

The brief instructions below outline the most important pre-settings. A complete explanation of all functions can be found in the general *SilverFast* manual.

## General defaults (*SilverFastSE*\* / *SilverFastDCSE*\*\*)

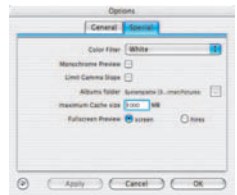
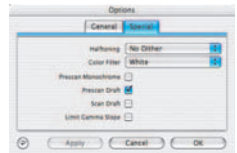
- **Option Parameter:** Saves (and loads) all settings of the “Option” dialogue into a single output file.
- **Gamma Gradation:** This adjusts the general brightness of the image for midtone and shadow. In general, a gamma of 1.6-1.8 is recommended. For transparency, the gamma is normally higher than for reflective (transparency 1.8-2).
- **Gamma expected in 48Bit/HDR\*\*:** With a value of „1”, the images will be opened as if the embedded gammut were linear. No adaptation then takes place. If, however, the source program has already set a different gammut, the correct value should be entered here.
- **Reopen SF after scan\*:** Normally *SilverFast* (as Photoshop Plug-In) will be closed after scan and has to be started again for next scan.
- **Reopen SF after processing\*\*:** Normally, *SilverFast* (Photoshop Plug-In) is closed after processing the image and must be reopened manually for the next image. This only applies when working in a mode of “normal” and “Batch”. When using the “...(File)” or „to Album” modes, *SilverFast* remains open after processing.



- **Open VLT at startup\*\***: If the VLT should be opened at each start of *SilverFastDCSE* check this box. If active, the main windows of *SilverFast* will not open and the VLT will show. In case the VLT is then closed, the *SilverFast* main dialogue window is opened immediately.
- **Show image after scan\* / Show image after processing\*\***: If this option is selected, the finished file will be opened by the finder. (Applicable if “Normal (File)” and “Batch mode (File)” are selected).
- **Realtime correction**: The normally present realtime correction can be turned off here for use with older and slower computers.
- **Keep settings for new images\*\***: If activated, the presets of the *SilverFast* dialogue remain until the opening of the next image. By this it is easy to process series with identical parameters.

### Special defaults (*SilverFast SE\** / *SilverFast DCSE\*\**)

- **Halftoning\***: Dithering algorithms for scanning halftone images in lineart mode
- **Colour Filter (blind colour)\*/\*\***: Select the colour, which you wish the scanner to ignore during monochrome scans. You can choose between red, green or blue.
- **Monochrome Preview**: In case there is scanning in greyscale or black and white only, you can speed up the pre-scan considerably by selecting “Prescan monochrome” (filter has to be set to green or any colour except white).
- **Prescan Draft\***: Faster prescan with reduced quality.
- **Scan Draft\***: For scans with reduced quality.
- **Limit Gamma Slope**: May be checked if much noise is encountered in the shadows. The slope of the gamut curve which is especially steep in the shadows, will then be reduced to an almost linear function.
- **Albums folder\*\***: The location and the path for the albums may be adjusted here.
- **Maximum Cache Size\*\***: Adjustment for the cache memory size. This is mainly used by *SilverFastDCSE* and *-DCPro* where, for example, the conversion of RAW data takes up much space while this data is only of temporary interest.
- **Fullscreen Preview\*\***: “Screen” fits image to your monitor. “Hires” displays image in 1:1 (100%) resolution.



LaserSoft Imaging AG  
Luisenweg 6-8  
24105 Kiel • Germany  
Tel.: +49 (0) 431/5 60 09-0  
Fax: +49 (0) 431/5 60 09-96  
E-Mail: [Info@SilverFast.de](mailto:Info@SilverFast.de)  
[www.SilverFast.de](http://www.SilverFast.de)

LaserSoft Imaging, Inc.  
625 Freeling Drive  
Sarasota, FL-34242, USA  
Phone: (+1) 941-312-0690  
Fax: (+1) 941-312-0608  
E-Mail: [Info@SilverFast.com](mailto:Info@SilverFast.com)  
[www.SilverFast.com](http://www.SilverFast.com)



E, D, F  
Esp, It, Pt

07-2010

SilverFast® und LaserSoft Imaging™ sind die eingetragenen Warenzeichen der LaserSoft Imaging AG, Deutschland. Alle erwähnten Warenzeichen sind die geschützten Warenzeichen der jeweiligen Inhaber.

SilverFast® and LaserSoft Imaging™ are registered trademarks of LaserSoft Imaging AG, Germany. All mentioned trademarks are the protected trademarks of the respective owners.

SilverFast® et LaserSoft Imaging™ sont des marques déposées de LaserSoft Imaging AG, Allemagne. Toutes les marques mentionnées sont les marques protégées des propriétaires respectifs.

SilverFast® y LaserSoft Imaging™ son marcas registradas de LaserSoft Imaging AG, Alemania. Todas las marcas mencionadas son marcas protegidas de sus respectivos propietarios.

SilverFast® e LaserSoft Imaging™ sono i marchi registrati della LaserSoft Imaging AG, Germania. Tutti i marchi che qui compaiono sono marchi protetti dei rispettivi proprietari.

SilverFast® e LaserSoft Imaging™ são marcas registradas da LaserSoft Imaging AG, Alemanha. Todas as marcas mencionadas são marcas protegidas dos respectivos proprietários.



**LaserSoft Imaging®**